

IC7000BKT Icom IC-7000 CAT Control

Table of contents

Information on IC7000BKT	4
What it is	4
Connection with the PC	5
Changelog	6
Program registration	15
Functions	16
Configuration	16
Configuration	16
Configuration COM	18
Configuration PTT	19
Audio configuration	19
Language selection	20
Limits of band and mode	21
Startup programs	22
Main Window	23
Split	24
Memories	25
Management Memories	25
Editing Memory Bank	25
Memorize the current setting	27
Synchronization of the memories	28
Memory Import / Export	28
Scanner	29
Scanner	29
Scansion Log	30
Scanner Preset	32
Frequency to ignore	32
Skeds	33
Skeds	33
Activation sked	34
Generate recur skeds	34
Delete skeds	35
Bands	35
Set Mode	36
CW Setting	37
Setting	38
Utility	38
AutoCQ	39
Plug-in	39
Plug-In Management	40
OnAir	41
Hook Clipboard	41
PTT	42
Recorder audio	43
QuickSet	44
Custom Key	45
Various	45

List	45
DTCS	46
Tone	46
DUP	47
Chosen VFO	47
OFF-LINE Mode	47
Band Stacking	48
Numerical Input	48
Progress Indicator	49
Function Full Version	49
Remote management by TCP/IP	49
Remote management by TCP/IP	50
BKTClient	50
Access Control	50
BKTClient	51
Configuration	52
BKTSerVer	52
BKTRS232 Alternative serial driver	54
Interfacing with other programs	54

Information on IC7000BKT

Created with the Personal Edition of HelpNDoc: [Streamline Your CHM Help File Creation with HelpNDoc](#)

What it is

IC7000BKT

[Top](#) [Next](#)

What it is

[Top](#) [Next](#)

ATTENTION: this guide has been translated by an automatic system, excuse

IC7000BKT - Cat Control by IZ2BKT

RTX: IC-7000

172 ms

AF

Mini Store

Sync Polling

SQL

PO

RF

SIG

SWR

PO

COM

ALC

144.414.000

VFO B:14.076.000 USB F2 SQL

S 4

100%

Filter:2 SOFT Default

BW - 2.4 KHz +

I. S. - +0 Hz +

O.S. - +0 Hz +

T.PBT - +0 Hz +

NB Default

LEV. 50%

WID. 50%

2 mt 144MHz Band Stacking: 1 2 3

144.000.000 148.000.000

Split Memories Scanner Skeds Bands Set Mode Utility Auto CQ Plug-In On-Air Info

IZ2BKT 7.000 ICOM

IC7000BKT - Cat Control by IZ2BKT (c) IZ2BKT - Capelli Mauro

<http://www.maniaradio.it>

<http://www.iz2bkt.com/forum>

Total run (Days - Hours:Minutes) :0 - 14:37

Local --> 19:11 - 25/01/2015 UTC --> 18:11 - 25/01/2015

Exit F1- Help

Radio Station : IZ2BKT Operator : Mauro

Hook Clip

IC7000BKT - PTT

Setup

1750Hz

Tune AutoTune

Tx Time

Reset

Partial 0:00:00

Total 0:00:11

IC7000BKT - AudioRecorder - PCM 11,025 kHz; 8 bit; Mono

Record only if SQL OFF ☒ File: AUTO

The IC7000BKT CAT program controls the ICOM IC-7000 transceiver using a personal computer running Microsoft Windows 2000, XP, Vista, Windows 7 32 and 64 bit. It uses the CI-V socket (on the IC-7000 rear panel) and requires a small interface to the PC serial or USB port.

The main window has the most commonly used commands.

When the cursor hovers over a button or slider a pop-up balloon will display a short description of its function.

Right clicking on a slider will allow a numerical value to be input for that setting

The Red/Green LEd's located at top left of the window blink at the data transfer rate between the program and the Txcvr.

Press F1 key to call this guide..

Created with the Personal Edition of HelpNDoc: [Streamline Your Documentation Process with a Help Authoring Tool](#)

Connection with the PC

Connection with the PC

[Top](#) [Previous](#) [Next](#)

The connection between the PC port and CI-V connection of IC7000 requires a level conversion interface. You can either purchase the Icom accessory, or a third party converter, or build your own as in Fig.1 or Fig. 2.

Different communication rates can be selected dependent on your PC (the minimum recommended speed setting for the

The program was also tested with various USB and serial interfaces and with the [West Mountain Radio RIGtalk](#).

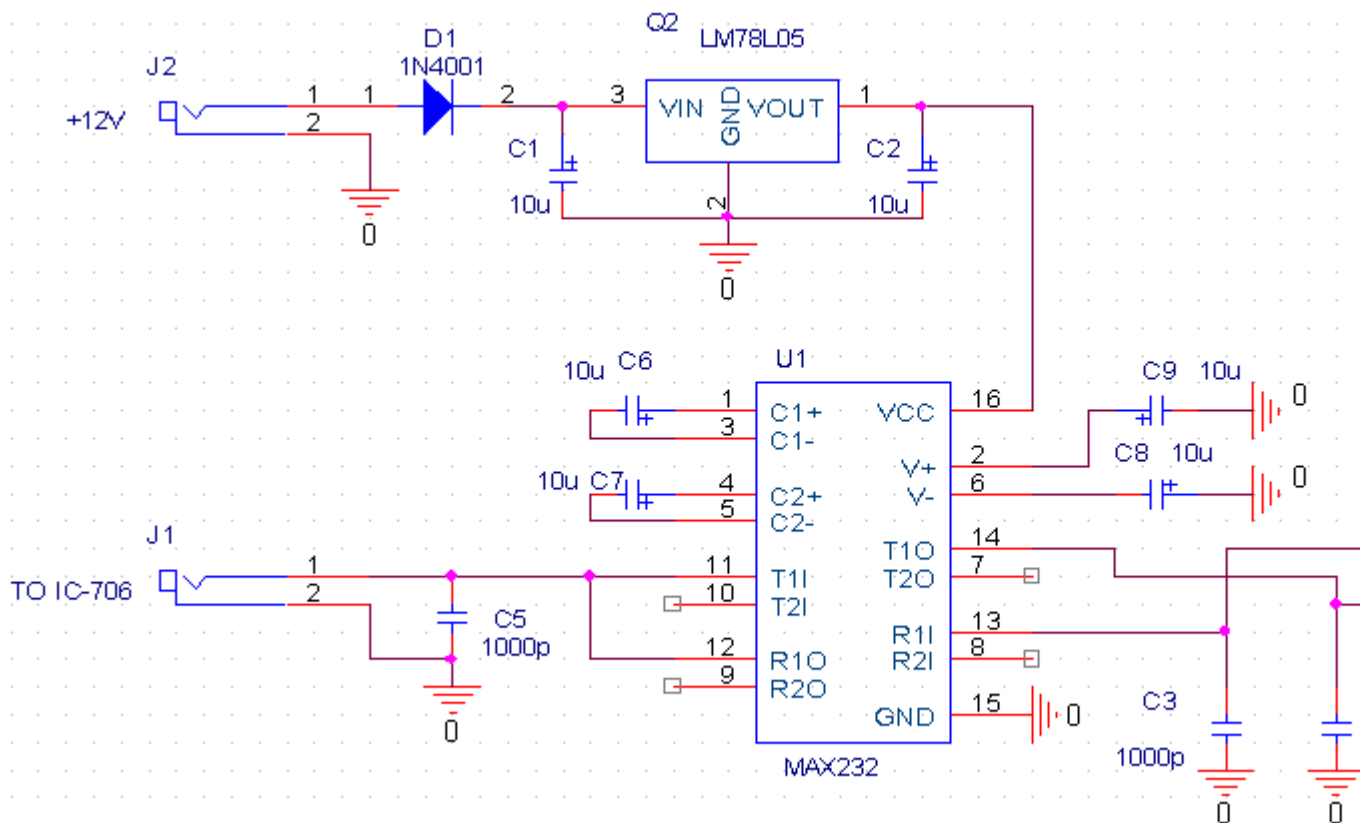


Fig. 1

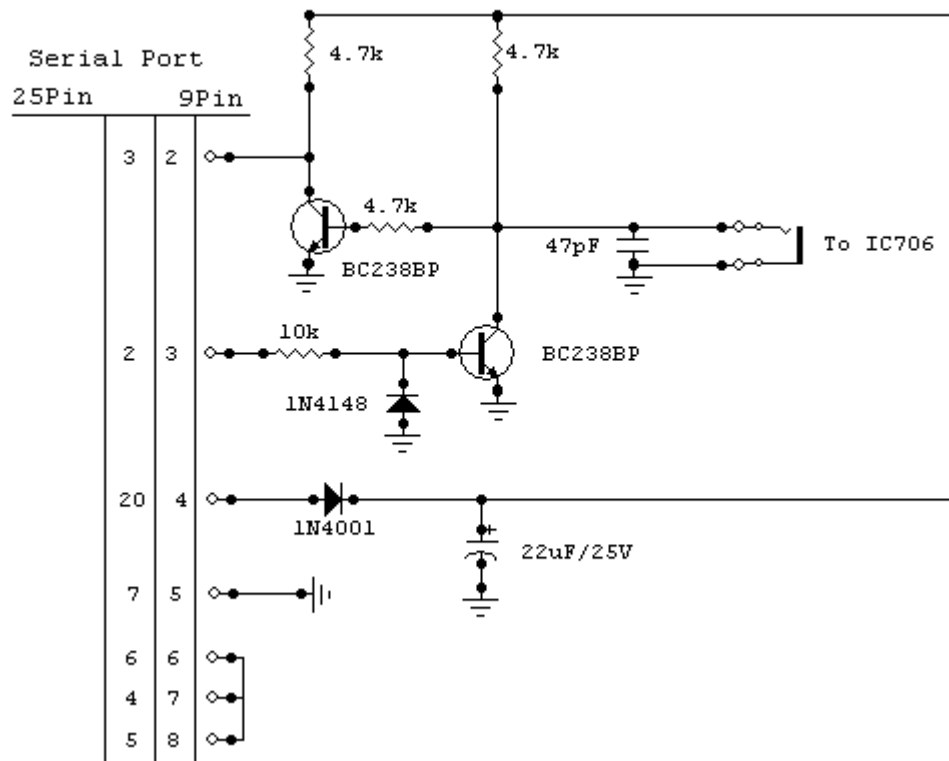


Fig. 2

Interfacing with the audio card of the PC

In order to use the functions audio of the program it must connect the RTX with the audio card of the PC. For who it poss other digital ways managed them with the SoundBlaster can use it also for the functions audio of this program, otherwise audio escape of the SoundBlaster with the PIN11 of connector ACC and the entrance microacoustics of the SoundBlaster.

Created with the Personal Edition of HelpNDoc: [Write EPub books for the iPad](#)

Changelog

Versions

[Top](#) [Previous](#) [Next](#)

Ver. 1.0.0 08/27/2006
First official Release.

Ver. 1.0.1 09/05/2006
Adding [BKTCClientRemote management by TCP/IP](#)

Ver. 1.0.2 09/10/2006
Adding the frequency display font size configuration.
Adding RTTY section in [Set Mode](#).

Vers. 1.0.3 09/14/2006
Adding BKTEExtension7k.dll ver. 1.10.0.
Adding CW section in .

Vers. 1.0.4 09/24/2006
Adding support for wheel mouse to change the frequency.

Removed minor bugs.

Vers. 1.0.5 10/07/2006

Removed bug of the RF control.

Adding control RF/SQL in the manual synchronization.

Adding in the [PTT](#) window the key for transmission of the 1750Hz.

Vers. 1.0.6 10/20/2006

Adding [control for automatic antenna tuner](#).

Improved the graphics of the [main window](#).

Improved the precision of the SWR control.

Vers. 1.0.7 10/31/2006

Removed bug for [day and month setting](#).

[Auto poweroff setting](#).

[start-up programs](#).

Vers. 1.0.8

Improved [start-up programs](#).

[COM20](#).

Improved [scanner](#).

Adding [configuration](#) for scanner timing control.

Vers. 1.0.9 01/01/2007

Improved the AGC control.

Adding the control for the time constant of AGC.

Vers. 1.0.10 03/04/2007

Removed bug on slider background.

Vers. 1.0.11 03/09/2007

Removed bug on key and slider colors.

Vers. 1.0.12 03/10/2007

Separated the controls SQL and RF.

Vers. 1.0.13 04/20/2007

Removed bug in setting Mode and Filter to the start of a scanning between frequencies.

Correct ToolTip of the pause 1 in the scanner.

Vers. 1.0.14 06/05/2007

Improved the audio recording during the scanning.

Adding the function for the [message management the opening message screen indication capability of RTX](#).

Adding the function to [synchronize the clock of RTX with that of PC to the program startup](#).

Vers. 1.0.15 07/01/2007

Build help file compatible with Windows Vista.

Vers. 1.0.16 07/10/2007

Adding the Twin PBT control.

Adding the manual input for Pass Band Width, In Shift, Out Shift, Twain PBT and AGC.

Improved [numerical input](#).

Vers. 1.0.17 07/15/2007

Adding "General band".

Vers. 1.0.18 07/24/2007

Removed minor bug on Windows Vista.

Vers. 1.0.19 07/26/2007
Operating system control.

Vers. 1.0.20 07/29/2007
Improved [numerical input](#).

Vers. 1.0.21 07/31/2007
Improved communication command from and to RTX.
Adding read the [min and max frequency](#) from the radio.
[PTT Section](#).

Vers. 1.0.22 08/18/2007
The Restore function is available also in Free Version.
Improved communication engine.
Improved the Memory Mode.

Vers. 1.1.0 09/07/2007
Improved sort of the Frequency and Tone columns in the [memories grid](#).
Automatic calculation of the timeout based on speed of exchange data between program and RTX.
Improved communication engine.
Adding [import and export of the memories](#) in CSV format.
Adds the cancellation of the memories in the [synchronization](#).

Vers. 1.1.1
Improved automatic calculation of the timeout time.
Automatic calculation of the SMeter refresh time.

Vers. 1.2.0 02/11/2007
Adds parameters for import/export of the memories in file CSV.
Possibility to choose the device for audio input and output.
Adds automatic check of updatings.

Vers. 1.2.1 03/11/2007
Removed bug in name of key in AutoCQ function.
Removed bug in import memory from CSV file.

Vers. 1.2.2 04/11/2007
Removed bug in synchronization for setting Select in the RTX memory.
Control of the last character of every line of the file CSV to be import.

17/11/2007
Adds controls on Tone and DtcS in the memory importation from a CSV file.

Vers. 1.2.4 02/03/2008
The Store is enabled only if not in [Memory Mode](#).
To the start-up if doesn't exist the scanner Log file it deletes possible files WAV of the scanning.
[UTC Offset](#) is manual.
Improved the cancellation of the elements in the [ScanLog](#).

Vers. 1.2.5 13/03/2008
Correct a problem in load key.

Vers. 1.2.6 16/03/2008
Improved the compatibility with Windows Vista.

Vers. 1.2.7 05/06/2008
Improved the synchronization of the memories.
Support for [BKTClient](#) version 1.5.

Vers. 1.2.8 21/06/2008

Vers. 1.3.0 16/07/2008

Added the function CW Setting Mode in SET.

Vers. 1.3.1 17/08/2008

Improved communication with the external drivers.

Improved management of serial port.

Changed the installation folder.

Vers. 1.3.2 01/09/2008

Improved configuration of external drivers.

Improved control of new versions.

Vers. 1.3.3 05/10/2008

Added support up to COM40.

Vers. 1.3.4 18/10/2008

Added setup in the ability to set the value of latency manually.

Improved the automatic calculation of latency when using BKTClient.

Improved appearance when working in OFF-LINE.

Included BKTClient 1.5.1.

Vers. 1.3.5 08/11/2008

Corrected management of the NB Level.

Vers. 1.3.6 12/11/2008

Fixed bug in the selection of file to play with AudioRecorder.

Improved compatibility of AudioRecorder with BKTRS232.

Vers. 1.4.0 12/03/2009

Added function Reverse.

Activating the DUP is calculated the frequency of transmission.

The frequency of transmission of memories that use the DUP is calculated automatically.

Vers. 1.4.1 02/05/2009

Improved the choice of serial port in the program configuration.

Vers. 1.5.0 23/05/2009

Add the scan preset function.

Added parameter 0 = Automatic in the setup time management scanner.

Improved the calculation of pauses during the scan.

Vers. 1.5.1 27/05/2009

If flag "always on top" is off the masks of PTT and Audio Recorder will be minimized and restored with the main program window.

Vers. 1.6.0 22/07/2009

Add the function to [import the memories](#) from the ARRL TravelPlus program.

Vers. 1.6.1 25/07/2009

Improved ToolTips.

Vers. 1.6.2 06/08/2009

Adapted to the new website www.iz2bkt.com

Vers. 1.6.3 11/08/2009

Improved management of the timer.
Added the total time counter of use of the program.

Vers. 1.6.4 15/08/2009

Fixed a bug to work with the BKTRS232 driver.

Vers. 1.6.5 21/08/2009

Tones imported by the ARRL TravelPlus are set as RX and TX.
The import of memories from the ARRL TravelPlus programme is now made looking for the field name and not the position.

Vers. 1.6.6 27/08/2009

Correct the filter setting during the scan between memories.

Vers. 1.7.0

Added edit and insert the memory directly from the grid.
Improved clock synchronization with PC.

Vers. 1.8.0 29/11/2009

Added the [QuickSet](#): 10 keys for quick selection with stored frequency, mode, VFO in use, attenuator, preamplifier, SQL, power, RF, filter, NR, NB and ANF.
Added in the TAB Utility the possibility to show/hide the PTT, Audio Recorder and the QuickSet.

Vers. 1.8.1 08/12/2009

Update frequency when moving from TX to the RX.

Vers. 1.8.2 13/12/2009

Added the compressor mic state in the keys Quick-Set.

Vers. 1.8.3 11/01/2010

Improved Backup/Restore.

Vers. 1.8.4 02/02/2010

Removed a bug on the display of the PTT, AudioRecorder and QuickSet.

Vers. 1.8.5 07/02/2010

Corrected positioning

Vers. 1.8.6 06/03/2010

Capacities the QuickSet keys from 10 to 20.

Vers. 1.8.7 11/04/2010

Added control the rights assigned to the installation folder.

Vers. 1.9.0 04/06/2010

Improved the Split function.
Stores the path of the last backup.
Added support DDEServer compatible with DX Commander.
Improved search updates.
Improved function Tune.

Vers. 1.9.5 03/07/2010

Improved AutoCQ.
Adding the selection of the mode of communication with the serial port: mode 1 and mode 2.

Vers. 1.9.6 26/07/2010

Fixed a minor bug in using external drivers.

At startup the CI-V Transceive parameter of the SET mode is put to ON.

Vers. 1.9.7 18/08/2010

Fixed a bug about restoring the default in configuring limits bandwidth and mode.
BKTEExtension7k .dll ver 1.10.1: Correct the version returned by ExtGetVersionDLL ().

Vers. 1.9.8 23/09/2010

Added control DTCS and Tone while entering or importing a memory.

Vers. 1.10.0 10/10/2010

In the Memory window added the following functions:

Delete Block: erase a block of memory

Remap: remaps memories second sorting chosen

Save To File: saves the current memory bank in a file

Load From File: load current bank memory from a file

Vers. 1.10.1 26/10/2010

Fixed some bugs in memory management.

Vers. 1.11.0 21/11/2010

Added the Restore Default button in the program configuration.

Added font selection for the main and secondary windows.

Vers. 1.12.0 23/01/2011

Added control on writing rights of the configuration file.

Compiled for compatibility with Windows 2000.

Vers. 1.13.0 26/02/2011

Added other settings in [Set Mode](#)

Vers. 1.14.0 24/03/2011

Added the Polling mode.

Corrected minor problems (rescue position windows, size fields, correction window closure request registration).

Fixed a bug that resets the file memories when run certain plug-in on startup.

Improved calculation of connection speed

Improved the program startup.

Vers. 1.14.1 29/03/2011

Improved the management of commands with slider (volume, power, etc.) and the frequency with the mouse wheel.

Improved the sending of frequency and mode to programs that are linked via BKTEExtension or via DDE.

Vers. 1.15.0 23/04/2011

Finished the support for Windows 2000.

In the configuration COM is also possible to choose the COM not connected to any device.

Improved the saving and restoring the windows position.

Added registration and Auto Power Off in Skeds.

Vers. 1.15.1 13/08/2011

Removed bug on displaying PTT, AudioRecorder and QuickSet.

Vers. 1.16.0 30/12/2011

Added the function keys F2 through F9 plus the shift key to change the frequency.

Vers. 1.16.1 21/09/2012

Added control on frequency set by external programs.

Vers. 1.17.0 06/10/2012

Added driver BktDummy for operation in dummy mode.

Vers. 1.18.0 11/11/2012

Changed the management of external drivers for compatibility with Windows 8.

Vers. 1.18.1 24/11/2012

Updated BktClient 1.5.4:

- If you have multiple LAN cards you can specify the local IP address.

- Fixed bug translation.

Updated BktRS232 1.0.5:

- Fixed bug translation.

Vers. 1.19.0 23/12/2012

Add BKTClient2.

Vers. 1.19.1 30/12/2012

Correct display transmitting frequency selecting memory with DUP directly from tab Memories.

Vers. 1.19.2 10/02/2013

Improved serial communication.

Vers. 1.20.0 03/03/2013

Added interface minimized.

Includes BKTEExtension 1.12.0.

Improved color management.

Added reset button position windows in Utility.

Autoload registration key if saved in the program folder.

Fixed some minor bugs.

Vers. 1.21.0 01/01/2014

Integrate BktExtension7k ver. 1.13.0 compatible with BktRemote.

Vers. 2.21.1 11/01/2014

Improved management of the registration key.

Fixed a minor bug in the mask of synchronization memories.

Vers. 1.22.0 24/02/2014

Includes BktExtension7k ver. 1.14.0 with management memories selection.

Vers. 1.23.0 21/04/2014

Added the possibility to specify up to 5 frequency to be ignored during the scan.

Partial support for the IC-7100.

Vers. 1.24.0 30/04/2014
Improved management IC-7100.

Vers. 1.25.0 05/05/2014
Improved management IC-7100

Vers. 1.25.1 26/07/2014

Fixed bug on saving memory from VFO.
Fixed minor bugs.
Including BktExtension7k to ver. 1.15.0.

Vers. 1.25.2 13/08/2014

Include BktExtension7k ver. 1.17.0.

Vers. 1.25.3 11/10/2014

Automatic restart after configuration.

Vers. 1.25.4 18/12/2014

Improved copy/cut/paste of memories.

Vers. 1.25.5 28/12/2014

Correct trial version for 2015.

Vers. 1.26.0 26/01/2015

Added support for OnAir status on HrdLog and EnzoLog.
Improved loading of registration keys.
Changed the default font with Arial 9 points.
Improved the installation.

Vers. 1.27.0 09/05/2015

Added CAT support for HrdLog.

Vers. 1.27.1 19/07/2015

Support BKTEExtension 1.18.0

Vers. 1.28.0 01/09/2015

Adding [Custom Key](#)
Support BKTEExtension 1.19.0

Vers. 1.28.1 10/09/2015

Improved [Custom Key](#) window

Vers. 1.28.2 10/10/2015

Support BktExtension 1.20.0

Vers. 1.28.3 03/01/2016

Support BktExtension 1.21.0

Vers. 1.28.4 27/02/2016

View the version in use (Free, Full or Trial)

Vers. 1.28.5 03/04/2016

Correct filter settings when changing band

Vers. 1.28.6 18/08/2016

New version 1.0.1 of OnAir
Correct link to the forum

Vers. 1.29.0 07/10/2017

Support BktExtension 1.22.0 for BktDxCluster Android

Vers. 1.29.1 21/08/2018

Link update

Vers. 1.29.2 02/01/2021

Improved audio device management

Vers. 1.29.3 02/06/2023

Correct key loading for the trial version

Vers. 1.30.0 04/04/2024

Various improvements

Vers. 1.31.0 15/01/2025

Added LAN protocol compatible with DX Commander by DXLabs (Replaces BktNetInterface)

Removed EnzoLog from On-Air as it is no longer active.

Several improvements

Vers. 1.31.1 23/01/2025

Improved LAN protocol

Vers. 1.31.2 29/01/2025

Improved LAN protocol compatibility

Vers. 1.31.3 04/02/2025

Correct command to go to TX from LAN protocol

Vers. 1.31.4 23/02/2025

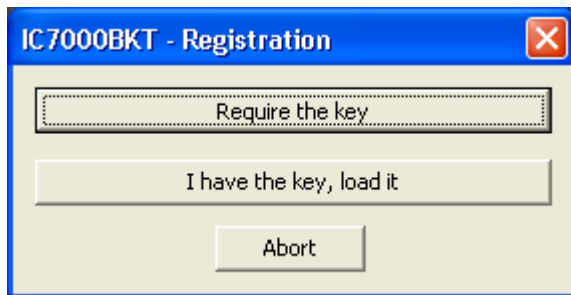
Improved LAN protocol for multiple commands

Created with the Personal Edition of HelpNDoc: [Single source CHM, PDF, DOC and HTML Help creation](#)

Program registration

Program registration

[Top](#) [Previous](#) [Next](#)



All the information on the registration are on: <https://www.maniaradio.it/en/ic7000registrazione.html>.

The activation key is sent via email as an attachment. Please note: the delivery system is automated and may be classified as SPAM by some providers or programs. Therefore, please configure your system to accept emails from the domains iz2bkt.com and maniaradio.it, and authorize attachments in ZIP format.

The activation key for the Free version is completely free and generated automatically upon first launch, allowing the use of many program functions. Furthermore, it allows you to try out the features of the Full version for 30 days.

To install the registration key:

Method 1:

Save the <call.IC7000BKT.bkt> key file to the program's installation folder.
Launch the IC7000BKT program.

Method 2:

Save the <call.IC7000BKT.bkt> file attached to the received email (replace "call" with your specified
callsign in the registration form) in a folder.
Launch the IC7000BKT program.
When prompted for registration, click on the [Load Key] button.
Select the folder and the file saved in step 1 and click [Open].
Save the activation key to a floppy disk or removable device for backup.

Created with the Personal Edition of HelpNDoc: [Write EPub books for the iPad](#)

Functions

Created with the Personal Edition of HelpNDoc: [Produce online help for Qt applications](#)

Configuration

Created with the Personal Edition of HelpNDoc: [Add an Extra Layer of Security to Your PDFs with Encryption](#)

Configuration

Configuration

[Top](#) [Previous](#) [Next](#)

General configuration of the program.

Is important that the values of communication of the serial port and the address CIV that has to exactly correspond with the ADDRESS in the IC7000. You advise to care the parameter CI-V BAUD of the transceiver as Auto.

- [COM] [Serial port and external drive setting.](#)
- [PTT] [PTT and antenna tuner setting.](#)
- [Audio] [Audio setting.](#)
- [RTX] Model RTX used.
- [Address CI-V] Exadecimal address of interface CI-V (default = 70).
- [S-Meter Calibration] Set up the values [Limit down] and [Divisor] to make to correspond the value read by the S-Meter of the RTX.
- [Colors] Choose the colors for display and the keys.
- [Communication with the Clipboard] Parameters for a correct [exchange of the data with the clusters programs](#)
- [UTC Offset] Points out the bewilderment in times among the time UTC and that local. If put to [Auto] for the calculation of the settings of Windows.
- [Log] Generally must be let empty, point out the name of a file in which to save the Log of exchange dates.
- [Use the memory E99 for the temporary data] If select this option the memory <99> of the bench <E> its used to support the control of the state of the DUP and the SPLIT.
- [Synchronize clock on startup] Enabling this option, the RTX clock is synchronized with one PC to the first change of minute of the programme.
- [Change Language] [Select the language.](#)
- [Timing scan control (0 for Auto)] Time in milliseconds for [scanner](#) manage function, leave 0 for automatic control.
- [Latency time (0 for Auto)] Work time in millisecondi, set to zero for the automatic calculation to the start. A too low latency time causes data loss between the pc and the rtx, a too high time slows down the reading of the data of the rtx.
- [Enable ToolTips] Enable the help ballons
- [Enable LAN protocol on port] Enable the TCP communication protocol on the specified LAN port. This feature includes DUP emulation and replaces the BktNetInterface plug-in
- [Check for updates every] Range of days for automatic updates of the program. Set to 0 not to check.
- [Font Main Window] Select the font to be used for the main window, [Size] to enlarge or shrink the main window size.

[Font Memory, PTT e Audio Recorder] Select the font to be used for the secondary window, [Size] to enlarge or shrink the
[Restore Default] Restore the default parameters of the program.

Created with the Personal Edition of HelpNDoc: [Free help authoring environment](#)

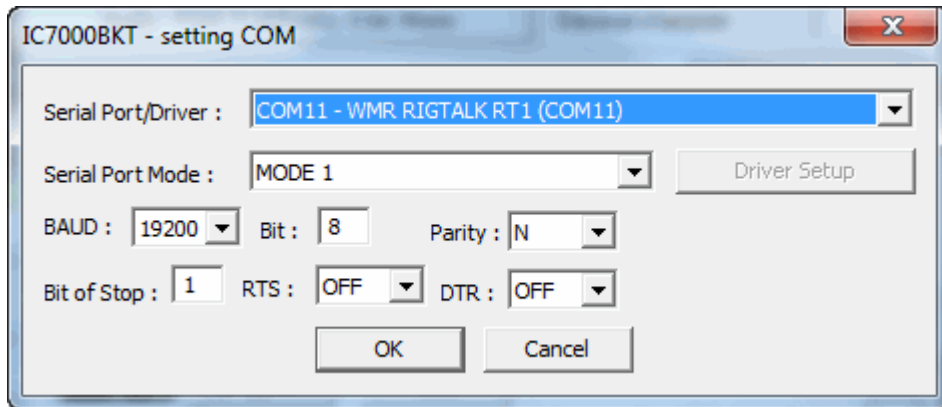
Configuration COM

Configuration

[Top](#) [Previous](#) [Next](#)

Configuration COM

[Top](#) [Previous](#) [Next](#)



These parameters are essential for a good operation of the program. If a transistor [interface](#) is used it is worthwhile to plan RTS and DTR to ON, with an [interface](#) with the MAX232 it is recommended to plan to 19200,N,8,1 with RTS and DTR to OFF. If you have other interfaces connected on the same serial ports (es. interfaces for PSK31), it needs RTS or DTR to OFF to avoid to send in transmission the RTX when he enters the program.

For a good functioning of the program not select speed lower to 9600 BAUDs.

Its possible to select an external driver (es. [BKTCClient](#) for the remote management by TCP/IP), in such case will be activated the key [Driver Setup].

Selecting the driver **BktDummy** the program will work in dummy mode also without the RTX connected.

[Serial Port Mode]: for USB interfaces or for RIGtalk of West Mountain Radio use MODE 1.

If there are connection problems try this:

- Change the [Serial Port Mode]
- Change the RTS and/or DTR
- Down the connection speed from 19200 to 9600 BAUD or lower
- Try to use [BKTRS232](#) driver

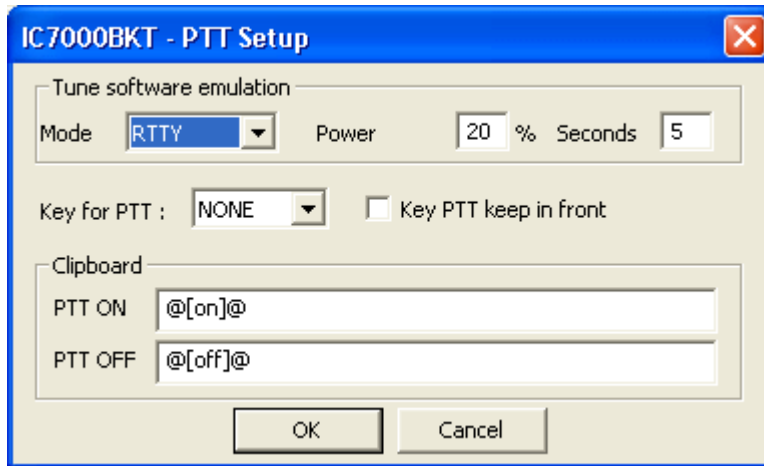
Created with the Personal Edition of HelpNDoc: [Achieve Professional Documentation Results with a Help Authoring Tool](#)

Configuration PTT

Configuration

[Top](#) [Previous](#) [Next](#)

Configuration PTT

[Top](#) [Previous](#) [Next](#)


Configuration of the management of the PTT, that is the possibility to send the RTX in transmission through the program.

[Tune software emulation] Put the RTX in transmission for the time and with power and mode specifies allowing to tune the antenna.

[Key PTT] **Select the key of the keyboard to use like PTT, NONE in order not to**
[Key PTT keep in front]Put the window of the PTT always in front of all the other

Clipboard
[PTT ON] **Sequence of characters that, if copied in the clipboard of Windows, transmission.**
[PTT OFF] **Sequence of characters that, if copied in the clipboard of Windows, reception.**

Created with the Personal Edition of HelpNDoc: [Effortlessly Convert Your Word Doc to an eBook: A Step-by-Step Guide](#)

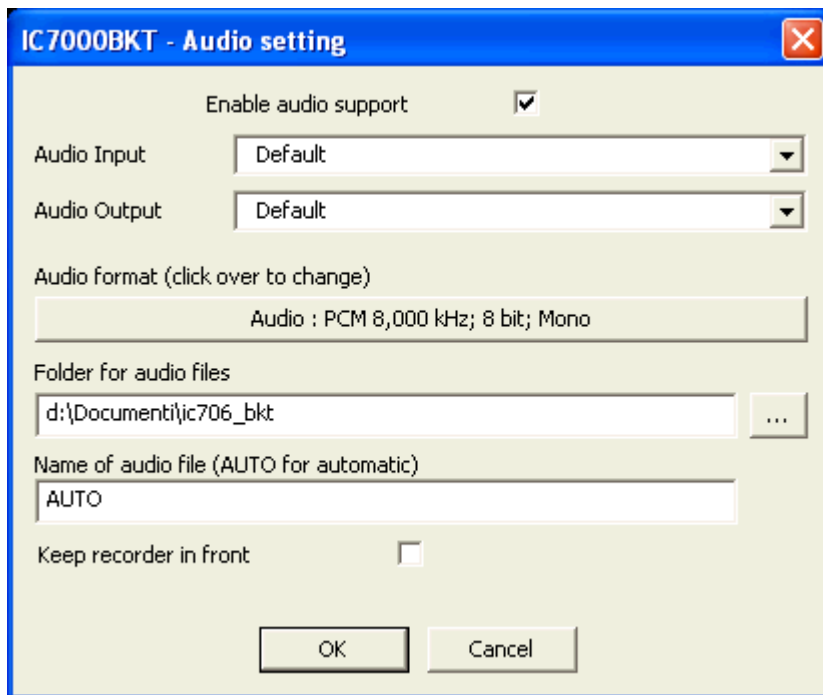
Audio configuration

Configuration

[Top](#) [Previous](#) [Next](#)

Audio configuration

[Top](#) [Previous](#) [Next](#)



[Enable audio support] Enable/disable the audio support.

[Audio Input] Chose the audio device for input. Default for windows default device.

[Audio Output] Chose the audio device for output. Default for windows default device.

[Audio format] Choose the audio format to use for the recording. To record vocal communications is preferred to install a CoDec MP3 and choose the low quality. With the configuration in figure, an hour of recording occupies approximately 3,5Mb of disc. To record digital communications them convene to use format PCM, in this case the occupation on disc will be much high. The extension of the files audio is WAV.

[Folder for audio files] Folder for saves the audio files. If the field is empty, it comes used the folder where the program is installed.

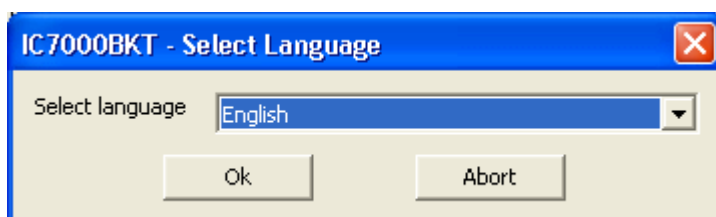
[Name of audio file] it is possible to specify a default name to use for the files audio, if he leaves AUTO, to the beginning of every recording, a file will be produced by the name BKTymmddhhmmss.WAV, where yy=year, mm=month, dd=day, hh=hour, mm=minute and ss=second of beginning recording.

[Keep recorder in front] If activated, the Audio Recorder is always maintained in front of all the other windows.

Language selection

Language selection

[Top](#) [Previous](#) [Next](#)



Select from the list the preferred language.

You can add languages by following this procedure:

1. Copy the file English.lng in the name of the language you want (eg. Franch.lng)
2. Edit with Notepad or BKTLocalize the file created in step 1
3. For each row, after the equals sign, put the phrase translated being careful not to change the codes (%1-% s-% n-\n-etc. ..)
4. Send me the translated file if you want to be published on the website of the programme

Created with the Personal Edition of HelpNDoc: [Step-by-Step Guide: How to Turn Your Word Document into an eBook](#)

Limits of band and mode

Configuration

[Top](#) [Previous](#) [Next](#)

Limits of band and mode

[Top](#) [Previous](#) [Next](#)

IC7000BKT - Band and mode limits

General coverage of RTX

From Hz To Hz

Band :

From Hz To Hz

Mode	Low limit Hz	High limit Hz
CW	<input type="text" value="1.800.000"/>	<input type="text" value="1.838.000"/>
RTTY	<input type="text" value="1.830.000"/>	<input type="text" value="1.834.000"/>
LSB	<input type="text" value="1.838.001"/>	<input type="text" value="2.000.000"/>
USB	<input type="text" value="0"/>	<input type="text" value="0"/>
FM	<input type="text" value="0"/>	<input type="text" value="0"/>

From this mask it is possible to define the limits of coverage for the RTX and for every radioamateur bands.

[General Cover of RTX] Point out the minimal and maximal frequency supported by the RTX.

[Read from RTX] Read the min and max frequencies of radio. Please note that these frequencies are not necessarily the absolute min and max.

[Band] To choose the amateur band to modify.

[From] [To] The minimal and maximum frequency of the selected band.

For every mode of emission to indicate wrap it of frequency used inside of the selected band following the amateur BANDPLAN.

[Restore default] Restore the default values of the program.

ATTENTION: all the values of frequency are in Hz.

Created with the Personal Edition of HelpNDoc: [Streamline your documentation process with HelpNDoc's WinHelp HLP to CHM conversion feature](#)

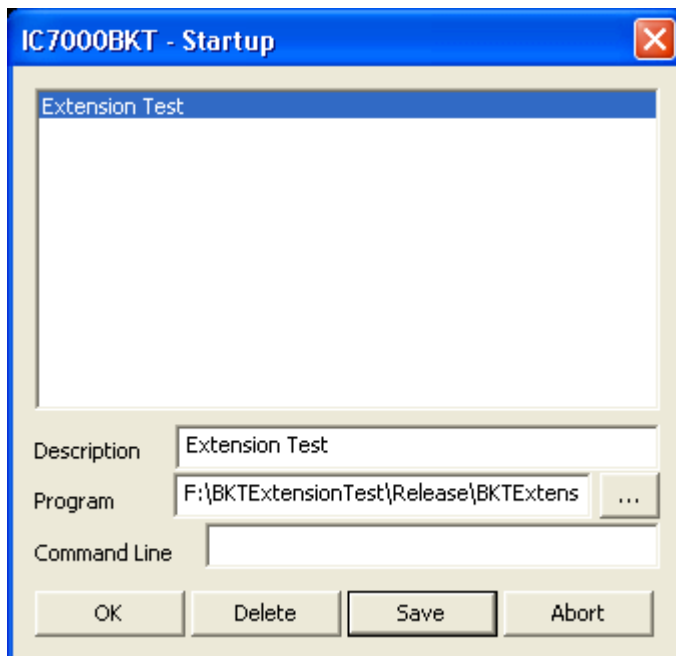
Startup programs

Configuration

[Top](#) [Previous](#) [Next](#)

Startup programs

[Top](#) [Previous](#) [Next](#)



The programs specified in this window will be started to the start of IC7000BKT.

For every program to introduce:

Description: description of the program

Program: program inclusive of path, ex. c:\windows\notepad.exe

Parameters: parameters for the program

[...] find the program

[OK] closes the window saving the possible changes

[Delete] delete the selected program

[Save] save the input

[Abort] closes the window without saving the possible changes

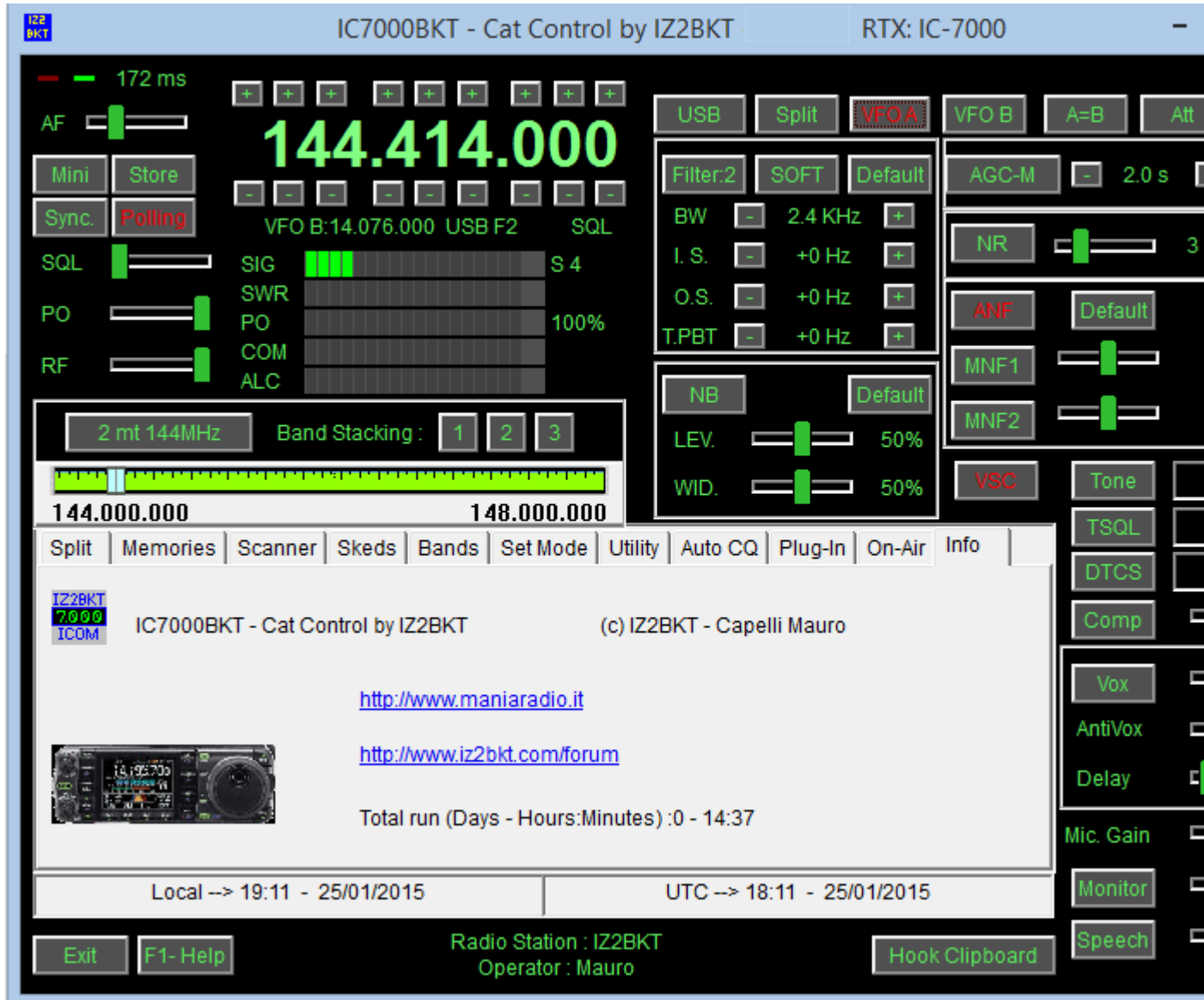
Created with the Personal Edition of HelpNDoc: [Simplify Your Help Documentation Process with a Help Authoring Tool](#)

Main Window

Main Window

[Top](#) [Previous](#) [Next](#)

ATTENTION: this guide has been translated by an automatic system, excuse



In the main window they are present the commands of great use, **stopping itself with the mouse on a key or a slider description of the command, while, click with the mouse right key on the sliders or on numerical values to input**

The two Led green/red places up to right of the window blink to the passage of data between program and RTX.

As to change frequency:

- Click with the right mouse button on the frequency, enter the frequency in Hz and press the Enter key.
- Use the keys + and - disposed to the edges of the frequency display.
- Position the mouse on the frequency display and use the wheel of the mouse.
- Use the function keys F2 through F9 and Shift.

□

Information on the main window:

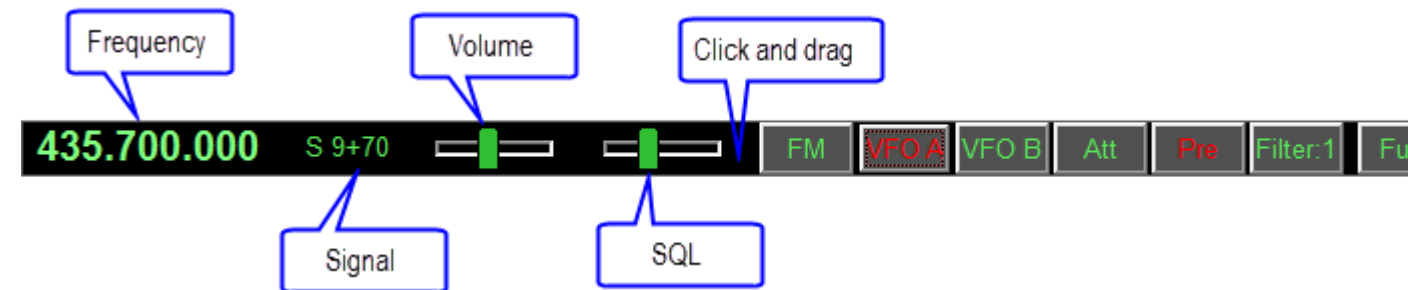
- Date and hour in local format and UTC.
- Information on the Radio station and Operator.
- Tuning bar. Click and drag the pointer to change frequency. The bar will become of red color when the RTX is syntonized. Click with the mouse right key for [numerical input](#) of the frequency.

☐
Keys:

All the keys are easily identifiable, signal:

[Mini] 

[Sync.] 

☐ 
☐ 
☐ 
☐ 
☐ 
☐ 
☐ 
☐ 
☐ 
☐ 
INTERFACE MINIMIZED:

Activated by the button [Mini] allows to manage all functions of the radio, taking up little space on the screen.

Created with the Personal Edition of HelpNDoc: [Benefits of a Help Authoring Tool](#)

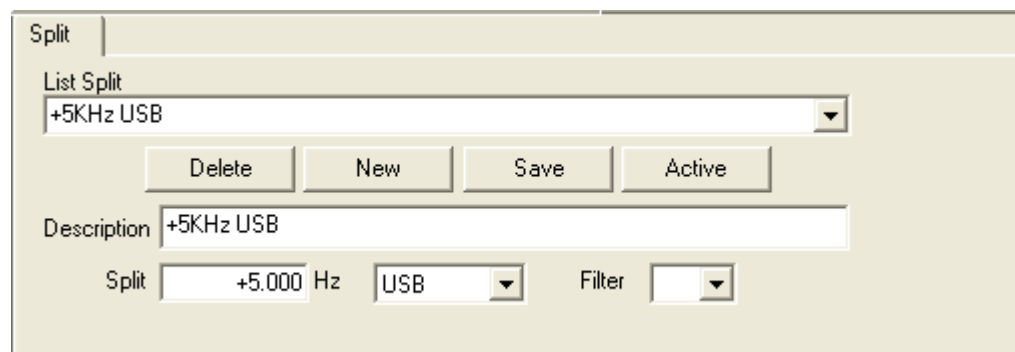
Split

Functions

[Top](#) [Previous](#) [Next](#)

Split

[Top](#) [Previous](#) [Next](#)



Management of the split, that is, the possibility to receive and to transmit inside on two various frequencies of the same band.

[Delete] Cancels the selected split

[New]	Predisposes the fields for the input of a new split
[Save]	Saves the split
[Active]	Active the split
[Description]	Description of the split
[Split]	Offset value of reception frequency to set the transmission frequency, mode and transmission filter

For disable the Split use the relative key on [main window](#).

ATTENTION: the offset frequency is in Hz.

Created with the Personal Edition of HelpNDoc: [Free Web Help generator](#)

Memories

Created with the Personal Edition of HelpNDoc: [Make Documentation Review a Breeze with HelpNDoc's Advanced Project Analyzer](#)

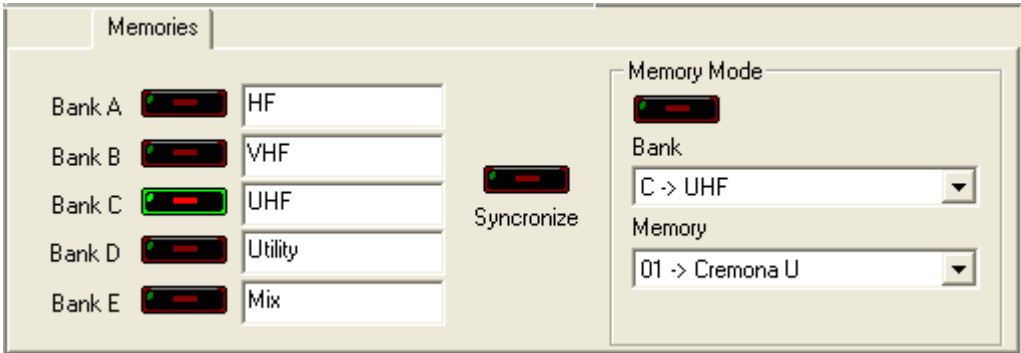
Management Memories

Memories

[Top](#) [Previous](#) [Next](#)

Memories Management

[Top](#) [Previous](#) [Next](#)



Management of the 5 memory banks. It's possible to associate a name to every bank.

[Bank n]	It opens/Closes window of management of the memories
[Synchronize]	Synchronize the memory database with the memory of the
[Memory Mode]	Puts the RTX in memory mode and enable [Bank] and [Mer

Created with the Personal Edition of HelpNDoc: [Converting Word Documents to eBooks: A Step-by-Step Guide with HelpNDoc](#)

Editing Memory Bank

Memories

[Top](#) [Previous](#) [Next](#)

Editing Memory Bank


[Top](#) [Previous](#) [Next](#)

IC7000BKT - Memory Bank B -

Nr	Description	Rx Freq. Δ	Rx Mode	Rx Filter	Rx Tone	Rx TSqL	Rx DtcS	Rx Ac.T.	^Tx	Tx Freq.	Tx Mode	Tx Filter	Tx To
82	N7TWB	447.950.000	FM	1	100.0	88.5	023-NN	Tone	DUP-	447.950.000	FM	1	100.0
08	AJ9Y	448.075.000	FM	1	100.0	88.5	023-NN	Tone	DUP-	446.475.000	FM	1	100.0
29	KL7DSI	448.100.000	FM	1	100.0	88.5	023-NN	Tone	DUP-	448.100.000	FM	1	100.0
43	KB7FQO	448.325.000	FM	1	100.0	88.5	023-NN	Tone	DUP-	448.325.000	FM	1	100.0
38	KB7FQO	448.325.000	FM	1	100.0	88.5	023-NN	Tone	DUP-	448.325.000	FM	1	100.0
11	WB7EVI	448.575.000	FM	1	100.0	88.5	023-NN	Tone	DUP-	446.975.000	FM	1	100.0
07	W7IFH	448.825.000	FM	1	100.0	88.5	023-NN	Tone	DUP-	447.225.000	FM	1	100.0
02	W7DIN	449.075.000	FM	1	88.5	88.5	023-NN	Tone	DUP-	447.475.000	FM	1	88.5
33	WB7TUJ	449.100.000	FM	1	100.0	88.5	023-NN	Tone	DUP-	449.100.000	FM	1	100.0

III

Memory :

 Memory Mode 

RX: Frequency Mode Filter Tone TSqL DtcS

TX: Frequency Mode Filter Tone TSqL DtcS

Every variation, insertion and cancellation effected in this window will be reflected in the memories of the RTX in the [OFF-LINE mode](#)).

Click on the description of the column, you can change sorting display of memories (for example, description, frequency, etc...).

Double-click the cell to edit.

- [Delete] Cancel the selected memory.
- [Save] Save the selected memory.
- [Transfer to VFO] Transfer RX Frequency, Mode and Filter to the VFO-A and the TX Frequency, Mode and Filter to the RTX in VFO mode.
- [Save and Active] Save the selected memory and puts the RTX in Memory mode.
- [[Synchronize](#)] Synchronize this memory bank with the RTX.
- [Print] Print the memories as visualized in the grid.

Using the command Copy, Cut and Paste is possible to duplicate or to move memories from a bench to the other or one point to another.

- [Copy] Copy the memory selected in the clipboard.
- [Cut] Copy the memory selected in the clipboard and will cancel it when it comes chosen the function Paste.
- [Paste] Save the memory in the clipboard on that one selected.

- [Delete Block] Deletes a block of memories
- [Remap] Remaps memories second sorting chosen: click the heading of the column you want to choose the sorting, then click Remaps

- [Save To File] Saves the current memory bank in a file
- [Load From File] Load current bank memory from a file previously saved with [Save to File]. WARNING current memory will be lost.

- [Export] Export the memory bank in a file CSV.

[Import] Import the memory bank from a file CSV or a ARRL TravelPlus file. WARNING current memories will be lost.

[Memory Mode] Put the RTX in Memory mode and enable the selected memory.

Every memory contains:

[Description]	Description of the memory (max 9 alphanumeric characters)
[Rx Freq.]	Frequency of reception
[Rx Mode]	Modality of reception
[Rx Filter]	Filter in reception
[Rx Tone]	Tones in reception
[Rx TSQL]	SQL tones in reception
[Rx DtcS]	DTCS codes in reception
[Rx Ac.T.]	Active tone in reception (Tone, TSQL, DTCS or empty for nothing)
[^Tx]	Offset of transmission (DUP-, DUP+, SPLIT or empty to transmit on the same frequency of reception)
[Tx Freq.]	Frequency of transmission
[Tx Mode]	Modality of transmission
[Tx Filter]	Filter in transmission
[Tx Tone]	Tones in transmission
[Tx TSQL]	SQL tones in transmission
[Tx DtcS]	DTCS codes in transmission
[Tx Ac.T.]	Active tone in transmission (Tone, TSQL, DTCS or empty for nothing)
[Sel.]	Mark the memory as Selected and will come used during transmission of the memories selected

Click on the description of the column for change the ordering of visualization of the memories.

Created with the Personal Edition of HelpNDoc: [Free help authoring environment](#)

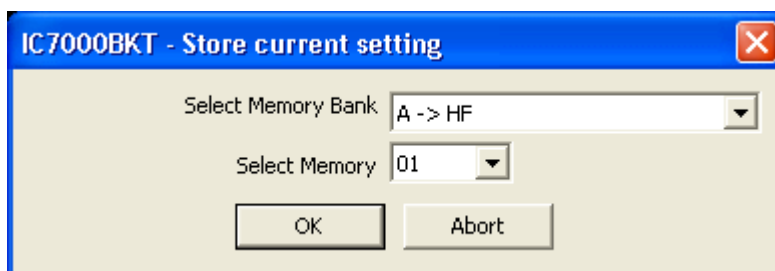
Memorize the current setting

Memories

[Top](#) [Previous](#) [Next](#)

Memorize the current setting

[Top](#) [Previous](#) [Next](#)



[Select Memory Bank] Select the memory bank to use

[Select Memory] Select the number of the memory to use

[editing memory bank](#) of the selected bank, you will have to insert the description of the memory and press [Save].

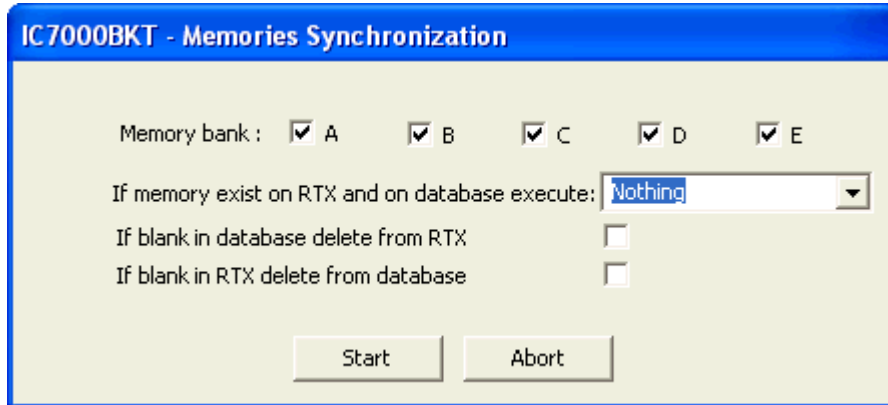
Created with the Personal Edition of HelpNDoc: [Streamline Your Documentation Process with HelpNDoc's Project Analyzer](#)

Synchronization of the memories

Memories

[Top](#) [Previous](#) [Next](#)

Synchronization of the memories

[Top](#) [Previous](#) [Next](#)


The synchronization serves to align the content of the database with the memories of the RTX.

[Memory bank]

Select the memory bank to Synchronize

[If memory exist on RTX and on database execute]

Select the action to execute if the memory is present in the RTX and in the database of the PC:

- Nothing = leaves unchanged database and RTX
- Overwrite database = overwrite the memory of the database with that of the RTX
- Overwrite RTX = overwrite the memory of the RTX with that of the database

[f blank in database delete from RTX]

If the memory in the database

cancelled in the RTX. To cancel the memory the RTX will come put in Memory M

memory by to cancel.

[f blank in RTX delete from database]

If the memory in the RTX is er

cancelled by the database.

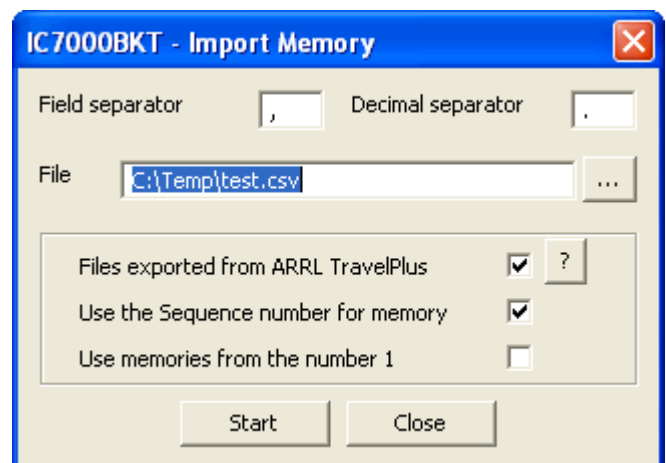
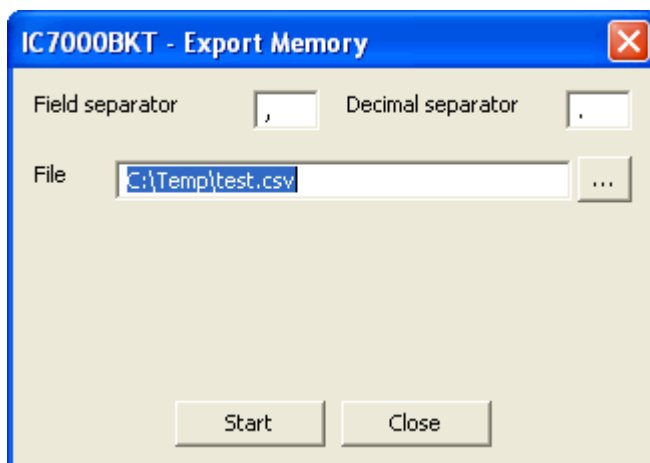
Created with the Personal Edition of HelpNDoc: [Maximize Your Productivity with HelpNDoc's Efficient User Interface](#)

Memory Import / Export

Memory Import / Export

[Top](#) [Previous](#) [Next](#)

Memory Import / Export

[Top](#) [Previous](#) [Next](#)


Import or Export the bench of memory in a CSV format file. The format CSV can be used with Microsoft Excel.

[Field separator] Character to be used for separating a field from the other.

[Decimal separator] Character to be used for pointing out the decimal value (Es. 87.5 use the point)

[File] Select the file to create or to use

[...] Press for browsing the folders to the search of the file

[Start] Begin the conversion

[Close] Close this window

[Files exported from ARRL TravelPlus] Used to import the memories generated with the ARRL TravelPlus programme

[Use the Sequence number for memory] Use the Sequence field as the number of memory (maximum 99)

[Use memories from the number 1] Import the memories from number 1 of the bench current and ignoring the sequence field

To successfully import the memories, use the function Export Repeater Data of the TravelPlus programme with the settings following :

Field	Truncate	Max.
<input checked="" type="checkbox"/> Sequence Number	6	6
<input type="checkbox"/> Band	25	25
<input type="checkbox"/> Country	6	6
<input type="checkbox"/> State	24	24
<input type="checkbox"/> Region	30	30
<input type="checkbox"/> Location	29	29
<input checked="" type="checkbox"/> Output Frequency	10	10
<input checked="" type="checkbox"/> Input Frequency	10	10
<input checked="" type="checkbox"/> Call Sign	13	13
<input type="checkbox"/> Repeater Notes	31	31
<input checked="" type="checkbox"/> CTCSS Tones	7	7
<input type="checkbox"/> Sponsor	30	30
<input type="checkbox"/> Distance	8	8
<input type="checkbox"/> Bearing	8	8

Column Sequence

To change the sequence in which columns are exported, highlight the column name and up it up or down in the list:

- Sequence Number
- Output Frequency
- Input Frequency
- Call Sign
- CTCSS Tones

Format

☒ Comma Delimited File
☐ Tab Delimited File
☐ HTML
☐ XML Spreadsheet

☒ Include Column Headings

Pre-Defined Formats

[Radio Programming Format](#)
[User-Defined Band Format](#)

Note: Data can also be selected from a list by row selection or Edit > Select All Columns. Then use Edit > Copy to copy to clipboard for pasting into other applications such as Excel.

Created with the Personal Edition of HelpNDoc: [Converting Word Docs to eBooks Made Easy with HelpNDoc](#)

Scanner

Created with the Personal Edition of HelpNDoc: [Effortlessly optimize your documentation website for search engines](#)

Scanner


Scanner

[Top](#) [Previous](#) [Next](#)

Scanner

[Top](#) [Previous](#) [Next](#)

Executes a cyclical search between two frequencies or from the memories of a bank.

[Start frequency]	Frequency of beginning search
[End frequency]	Frequency of end search
[Mode]	Operating mode with which searching, choosing FM or AM it is possible to use the SQL to stop the search
[Step]	Step of increment of the frequency
[Filter]	Filter using during the search
[Speed]	The search speed can be Fast or Slow
[Scan Memory]	Executes the search between the memories of the selected bank
[Bank]	Bank to use
[Only selected]	Execute the search only using the memories marked Selected of the bank chosen
[Fr.Exc.]	Allows you to specify the frequency to be excluded from scanning.  Fr. Exc. The button is red if the table contains frequencies.
[Preset]	Click Preset to manage the database of pre-set scan.
[Start]	Start the search
[Stop]	Interrupt the search
[Min.Sig.]	Minimal intensity of signal them because it is considered valid
[Pause 1]	Pause in seconds after to have found a signal and before resuming the search: 0 = Wait until that SQL passes in ON -1 = Use the resume of the IC-7000 and ignore Pause 2
[Pause 2]	Pause in seconds before passing to the successive frequency after that SQL is returned ON.
[Log]	Enable/disable scansion log
[Record]	Enable/disable the audio recording. The key is active only if it is active the audio support .
[View Log]	scansion log

ATTENTION: all the frequencies are in Hz.

Scansion Log

Scanner

[Top](#) [Previous](#) [Next](#)

Scansion Log

IC7000BKT - ScanLog						
Day	Month	Year	Time UTC	Freq./Mem.	Signal	Audio File
20	08	2006	14:31:07	146.650.000	S 9	20060820_143107_146650000_S 9.wav
20	08	2006	14:31:40	145.562.500	S 5	20060820_143140_145562500_S 5.wav
20	08	2006	16:37:42	435.700.000	S 7	20060820_163742_435700000_S 7.wav

This is the log build from the [scansion](#).

For every valid signal is recorded:

- Date in Day, Month and Year
- Hour UTC
- Frequency
- Intensity of the signal
- Audio recording (only if active)

☐
☐
☐
☒
☒
☐
☐
☐
☒
☐

Click on the description of the column for change the visualization ordering.

Scanner Preset

Scanner

Scanner Preset

[Top](#) [Previous](#) [Next](#)

IC7000BKT - Scan Preset

Description	Start Fr.	End Fr.	Mode	Filter	Step
VHF	145.000.000	146.000.000	FM	2	5 KHZ
UHF	434.000.000	435.000.000	FM	2	12.5 KHZ

Description :

VHF

Start frequency :

145.000.000

Hz

Mode

FM

Step

5 KHZ

End frequency :

146.000.000

Hz

Filter

2

Select

Abort

Save

Delete

New

ScanPreset to use pre-set of scans.

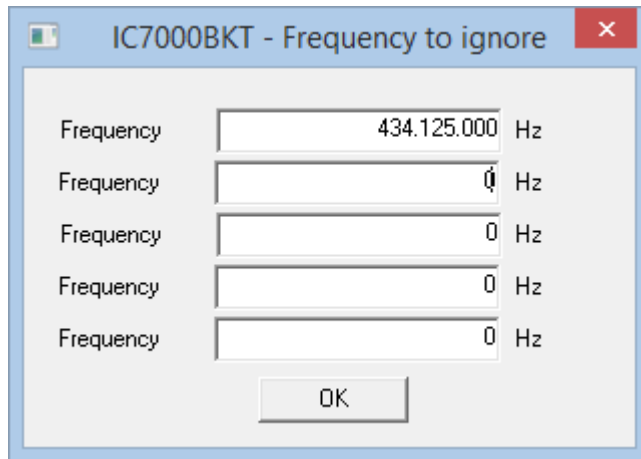
- [Select] Filler the values selected in the mask Scanner
- [Abort] Closes the window without changing the values in the mask of the Scanner
- [Save] Save the values in the fields of editing, if there is a scan with the same description will be overwritten.
- [Delete] Deletes the scan with the chosen description
- [New] Clear the fields of editing to facilitate the insertion of new data

Frequency to ignore

Scanner

Frequency to ignore

[Top](#) [Previous](#) [Next](#)



ScanPreset to use pre-set of scans.

[Select] Filler the values selected in the mask Scanner

[Abort] Closes the window without changing the values in the mask of the Scanner

[Save] Save the values in the fields of editing, if there is a scan with the same description will be overwritten.

[Delete] Deletes the scan with the chosen description

[New] Clear the fields of editing to facilitate the insertion of new data

Created with the Personal Edition of HelpNDoc: [Streamline Your CHM Help File Creation with HelpNDoc](#)

Skeds

Created with the Personal Edition of HelpNDoc: [Effortlessly Edit and Export Markdown Documents](#)

Skeds

Skeds

[Top](#) [Previous](#) [Next](#)

Split	Memories	Scanner	Skeds	Bands	Set Mode	Utility	Auto CQ	Plug-In	Info
List Skeds									
201105201500 ~ Test r->27									
Delete		New		Save		Delete skeds		Create recur sked	
<input checked="" type="checkbox"/> Delete old skeds on startup									
Descr. Test r->27				Time and Date UTC		Record SQL for 30 minutes (0 for no limits)			
VFO A 145.650.000		FM		Filter 1		VFO Active		Power OFF	
VFO B 0		LSB		Filter 1		Split		30 min.	

Allows to program the activation of frequencies and modes in dates and pre-arranged schedules. Thirty seconds before the programmed activation a message of warning that allows to annul the planning will appear.

[Delete] Delete the sked selected

[New] Emptie the fields for the input of a new one sked

[Save]	Save the sked
[Delete skeds]	Delete the skeds comprised between two dates
[Create recur sked]	Create recurrent skeds
[Delete old skeds on startup]	If checked, on program startup delete the skeds with date and time precedents
[Descr.]	Description of the sked
[Time and Date UTC]	Time and date of activation of the sked
[VFO A]	Frequency, mode and filter to use for the VFO A
[VFO B]	Frequency, Mode and filter to use for the VFO B
[Split]	Enable/Disable Split
[VFO Active]	VFO to use in reception
[Record]	No Record: does not start the audio recorder Record: starts to record the activation of the sked Record SQL: starts to record the activation of the sked recording only when the SQL is open
[Power OFF]	Select the minutes auto-off of RTX after the activation of the sked, OFF for not to activate the auto-off feature.

All the plannings are in date and time UTC and the frequencies in Hz. For a correct operation of this function it is essential that the RTX is power on in the moment of the programmed activation

Created with the Personal Edition of HelpNDoc: [Qt Help documentation made easy](#)

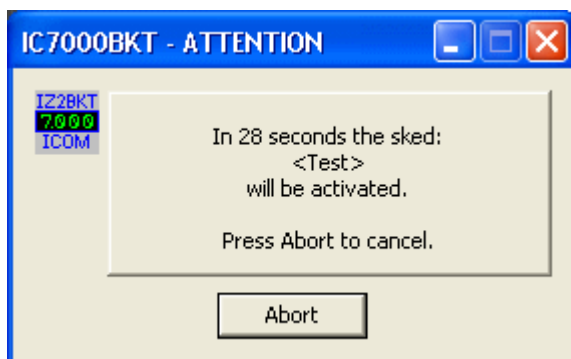
Activation sked

Skeds

[Top](#) [Previous](#) [Next](#)

Activation sked

[Top](#) [Previous](#) [Next](#)



Warning of the next activation of a sked, for interrupt the activation of a sked pressing [Abort].

Created with the Personal Edition of HelpNDoc: [Single source CHM, PDF, DOC and HTML Help creation](#)

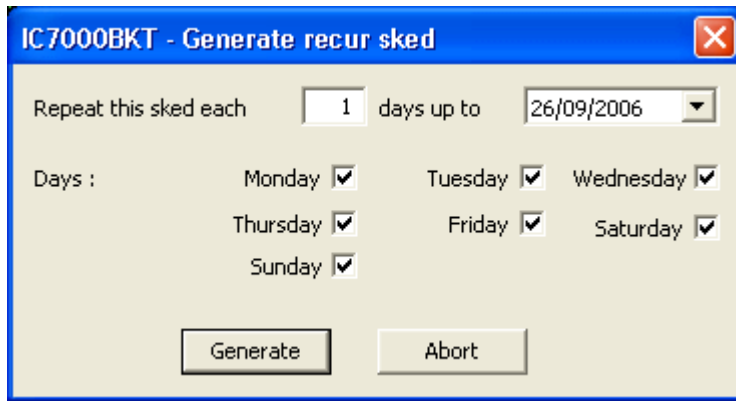
Generate recur skeds

Skeds

[Top](#) [Previous](#) [Next](#)

Generate recur skeds

[Top](#) [Previous](#) [Next](#)



Generate a recurrence of the actual sked. To the description of every generate sked will be added "r - > nn" where nn is a progressive number.

[Repeat this sked each]	Number of days between one sked and the other
[days up to]	Date of end skeds creation
[Days]	Valid days for the sked
[Generate]	Generate the sequence of skeds
[Abort]	Close the window without create sked

Created with the Personal Edition of HelpNDoc: [Protect Your Confidential PDFs with These Simple Security Measures](#)

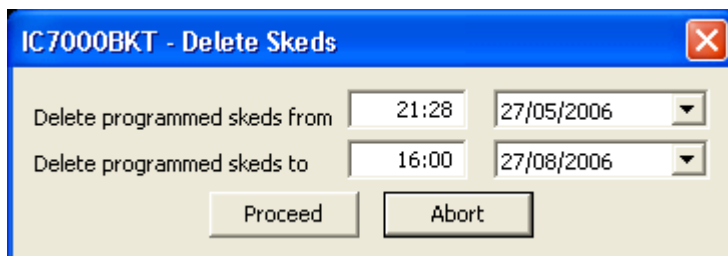
Delete skeds

Skeds

[Top](#) [Previous](#) [Next](#)

Delete skeds

[Top](#) [Previous](#) [Next](#)



Delete all skeds programmed among the specified dates.

[Delete programmed skeds from]	Time and date from which to begin to cancel, is proposed date
and time of the oldest skeds	
[Delete programmed skeds to]	Time and Date up to which to cancel, is proposed time and date
actual	

Time and date UTC.

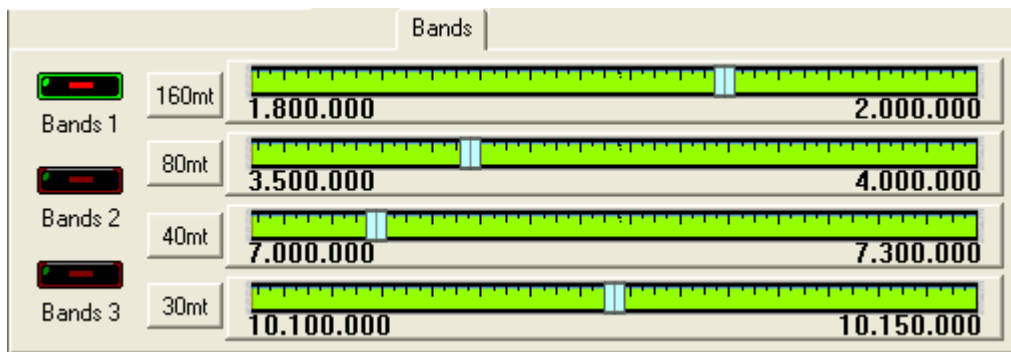
Created with the Personal Edition of HelpNDoc: [Ensure High-Quality Documentation with HelpNDoc's Hyperlink and Library Item Reports](#)

Bands

Functions

[Top](#) [Previous](#) [Next](#)

Bands

[Top](#) [Previous](#) [Next](#)


Radioamateurs bands in 3 groups on 4 tuning scales.

- [Bands 1] **First group: 160mt - 0mt - 0mt and 30mt**
Bands 2] Second group: 20mt - 17mt - 15mt and 12mt
Bands 3] Third group: 10mt - 6mt - 2mt and 70cm

Click on the pointer of tuning in order to enable the relative band.

[configure the Limits of band and mode](#)

Created with the Personal Edition of HelpNDoc: [Free Web Help generator](#)

Set Mode

Set Mode

[Top](#) [Previous](#) [Next](#)

The Set Mode window contains the following settings:

- Split**: []
- Memories**: []
- Scanner**: []
- Skeds**: []
- Bands**: []
- Set Mode**: []
- Utility**: []
- Auto CQ**: []
- Plug-In**: []
- Info**: []

Set Callsign: []

Enable opening message: ☒

Auto Power OFF: [OFF]

Clock

1 [25/02/2011] [21:32]

2 [Enabled] ☒ **Offset** [- 01:00] H

Synchronize with the PC clock: []

RTTY

Mark: [2125 Hz]

Shift: [170 Hz]

Polarity: [Normal]

CW Setting: []

Setting: []

The Set Mode is used to personalize the operation of the RTX.

[Set Callsign] [program registration](#)

[Enable opening message] Turns the opening message screen indication capability ON or OFF.

[Auto Power OFF] Set the power-off period for automatic shutdown, OFF for disable auto power-OFF

Clock

Management of the RTX clock

[1] Set dates and time of the first fused hourly

[2] Second fused

[Enabled] Visualization on display second fused hourly

[Offset] Offset of the second fused hourly regarding the first one from - 24: 00 to +24: 00 with steps of 5

minute

[Synchronize with the PC clock] Use date and hour currents to set up the clock of the RTX, synchronization will be made to the exchange of the minute.

RTTY

[Mark] RTTY Mark frequency

[Shift] RTTY Shift width

[Polarity] RTTY keying polarity

[CW Setting] [Setting the CW parametres](#) and menage the memory keyer.

[Setting] [Other settings](#) of the Set Mode

The options of personalization are many and various and will be implemented during the various versions of the program..

Created with the Personal Edition of HelpNDoc: [Transform Your Word Doc into a Professional-Quality eBook with HelpNDoc](#)

CW Setting

Set Mode

[Top](#) [Previous](#) [Next](#)

CW Setting

[Top](#) [Previous](#) [Next](#)

IC7000BKT - CW Setting

Pitch Hz Speed WPM SSB/CW Synchronous tuning ☐

Level Level Limit ☒ Keyer repeat time S. Keyer ratio

Paddle polarity Keyer type Rise time

Enable MIC up/down keyer (only for HM-103) ☐

Valid character: form 0 to 9 from A to Z space / ? , .
 ^ (send BT), * (Inserts contact number - can be used for 1 channel only)

Keyer Mem. 1

Keyer Mem. 2

Keyer Mem. 3

Keyer Mem. 4

Management of the parameters of configuration for the CW mode.

Valid characters for the memory keyer are: From 0 to 9, from A to Z, space, slash, interrogation mark, comma and point (/ ? , .).

Use the character ^ to send BT.

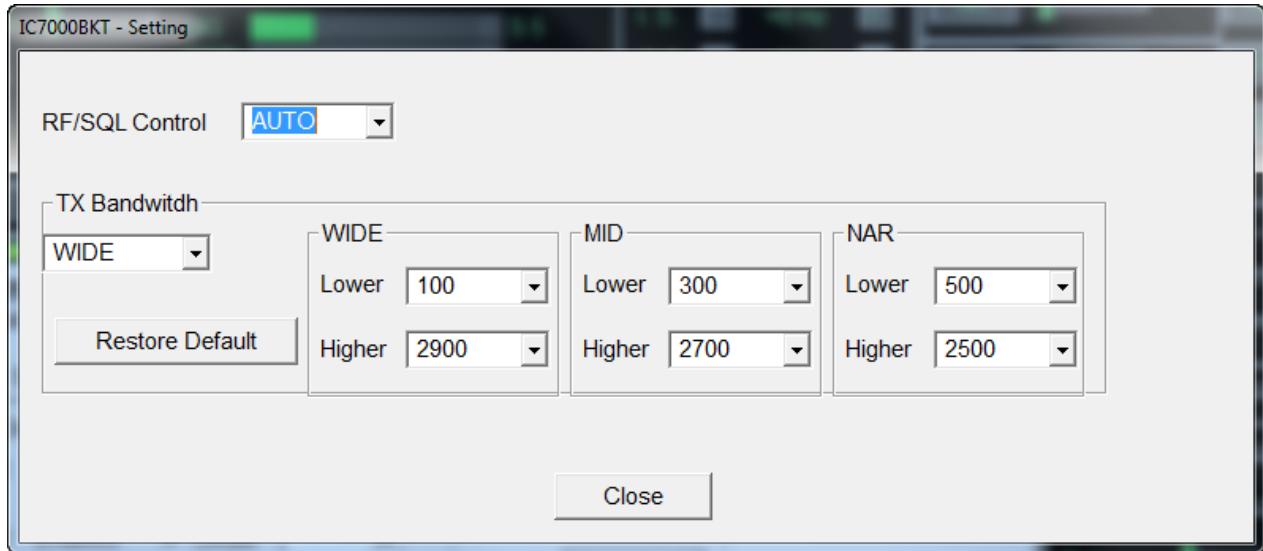
Use * to insert QSO counter (can be used in an only memory keyer).

Setting

Set Mode

[Top](#) [Previous](#) [Next](#)

Setting

[Top](#) [Previous](#) [Next](#)


RF/SQL Control : Defines the mode of control RF/SQL (see the manual of the IC-7000 for more details)

TX Bandwidth : Sets the bandwidth in transmission (see the manual of IC-7000 for more details)

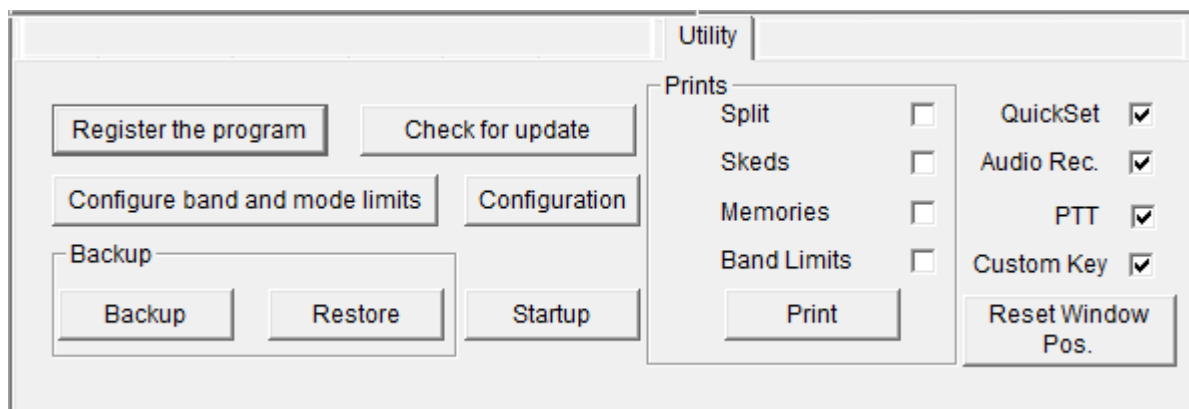
Created with the Personal Edition of HelpNDoc: [Save time and frustration with HelpNDoc's WinHelp HLP to CHM conversion feature](#)

Utility

Functions

[Top](#) [Previous](#) [Next](#)

Utility



[Register the program] [program registration](#)

[Check for update] Control if new version of the program is available (require active Internet)

[Configure band and mode limits] Management of

[Configuration] [Configuration of the IC7000BKT](#)

[Startup] [Select the programs](#) for running with IC7000BKT

Backup

[Backup] Save data and configuration in the file IC7000BKT_BACKUP.ZIP

[Restore] Restore data and **configuration** from a file of backup

Prints

Mark the files that are wanted to stamp and to press the key [Print]

[QuickSet] Show/Hide the [QuickSet](#) window

[Audio Rec.] Show/Hide the [Audio Recorder](#) window

[PTT] Show/Hide the [PTT](#) window

[Custom Key] Show/Hide the [Custom Key](#) window

[Reset Window Position] Reset to the default position of the various program windows

Created with the Personal Edition of HelpNDoc: [Don't Let Unauthorized Users View Your PDFs: Learn How to Set Passwords](#)

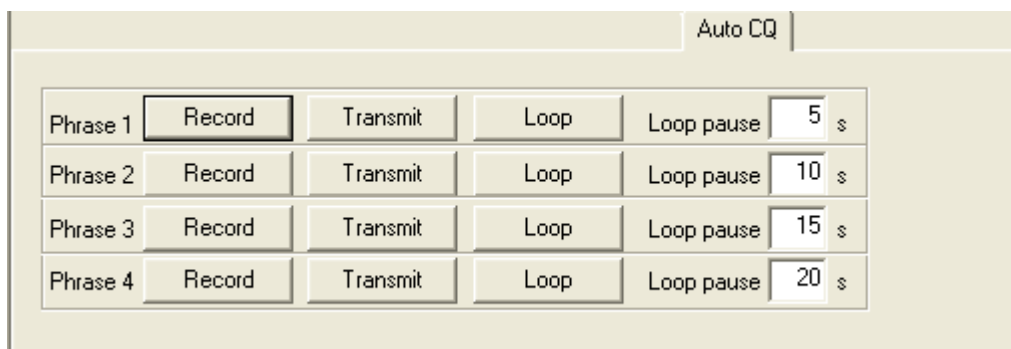
AutoCQ

Functions

[Top](#) [Previous](#) [Next](#)

AutoCQ

[Top](#) [Previous](#) [Next](#)



With AutoCQ it is possible to record up to 4 phrases that can also be reproduced in loop.

[Record] Records the phrase.

[Transmit] If activated, the RTX in transmission and it reproduces phrase.

[Loop] If activated, the RTX in transmission and it reproduces sentence. Re-push the key for interrupt immediately the reproduction and

[Loop pause] Pause in second between the reproduction of a phrase and the

Created with the Personal Edition of HelpNDoc: [Maximize Your Documentation Capabilities with a Help Authoring Tool](#)

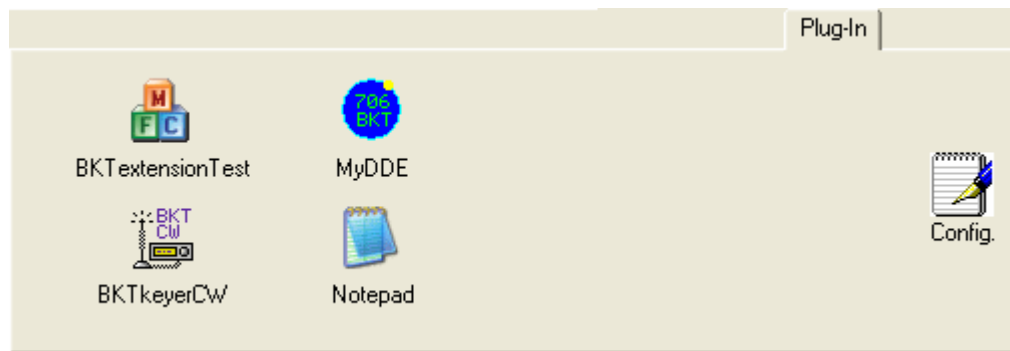
Plug-in

Plug-in

[Top](#) [Previous](#) [Next](#)

Plug-in

[Top](#) [Previous](#) [Next](#)



Management of Plug-In and external programs.

[Config.] [Configure Plug-In/programs](#)

The Plug-in they are additional programs that interact with IC7000BKT, however, can be added like Plug-In whichever program.

Created with the Personal Edition of HelpNDoc: [Make CHM Help File Creation a Breeze with HelpNDoc](#)

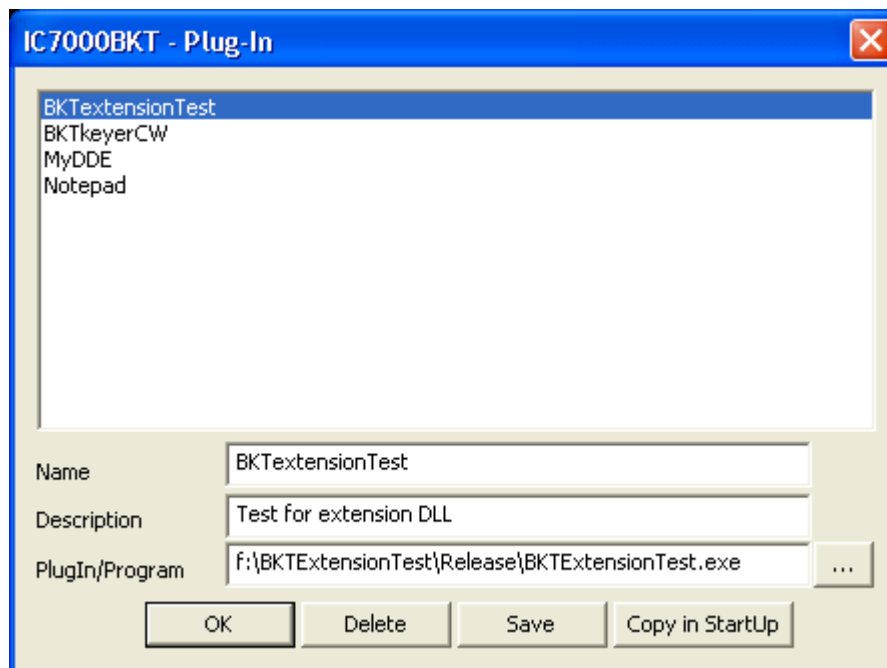
Plug-In Management

Plug-In

[Top](#) [Previous](#) [Next](#)

Plug-In Management

[Top](#) [Previous](#) [Next](#)



[Plug-in](#) configuration.

[Name]	Name of Plug-in
Description]	Description of the Plug-in functions
PlugIn/Program]	Command line of execution of Plug-in/program comprised of f
[..]	Look in the folders to the search of Plug-in
OK]	Returns to the program

[Delete]	Remove from the selected directory Plug-in (does not cancel Plug-in from the disc)
[Save]	Saves the modifications carried out to Plug-In selected
[Copy in StartUp]	Copy selected Plug-in in the group of programs Start and it will come executed to the IC7000BKT start

Created with the Personal Edition of HelpNDoc: [Maximize Your Documentation Capabilities with HelpNDoc's Project Analyzer](#)

OnAir

Funzioni

[Top](#) [Previous](#) [Next](#)

On Air

[Primo](#) [Precedente](#) [Prossimo](#)

The screenshot shows two sections for controlling On-Air status: HrdLog and EnzoLog.

HrdLog Section:

- Enable OnAir:** A checkbox that is currently unchecked.
- Callsign:** A text field containing "IZ2BKT".
- Radio:** An empty text field.
- Refresh:** A dropdown menu set to "30" with a unit "s".
- Enable Cat:** A checkbox that is currently checked.
- Code:** A text field containing "*****".
- Mode:** An empty text field.
- DX Cluster:** A blue hyperlink.
- Send Now:** A button.

EnzoLog Section:

- Enable:** A checkbox that is currently unchecked.
- Callsign:** A text field containing "IZ2BKT".
- Radio:** An empty text field.
- Refresh:** A dropdown menu set to "35" with a unit "s".
- Password:** A text field containing "*****".
- Mode:** An empty text field.
- Send Now:** A button.

Send via internet the On-Air status with frequency and operating mode in HrdLog and EnzoLog
If enabled, it adds some CAT features to HrdLog

[Enable] Enable / disable the automatic sending of the state

[Callsign] Callsign used in HrdLog or EnzoLog

[Code] Only HrdLog, enter the upload code received at registration on HrdLog

[Password] Only EnzoLog, enter the password to access EnzoLog

[Radio] Enter a descriptive text of the transceiver, if blank will be sent the description of the selected radio in configuration

[Mode] Mode, if blank will be sent to the current operating mode

[Refresh] Interval in seconds for sending a new state

[Send Now] Send status immediately

[Enable Cat] Enable the CAT interface to HrdLog, for example clicking on the frequency in the cluster page tunes the rtx (requires Microsoft .NET Framework 4)

[DX Cluster] Opens in the browser HrdLog DX clusters

On-Air operation requires an internet connection

More information about the On-Air are available on HrdLog and EnzoLog

Created with the Personal Edition of HelpNDoc: [News and information about help authoring tools and software](#)

Hook Clipboard

Functions

[Top](#) [Previous](#) [Next](#)

Hook Clipboard

[Top](#) [Previous](#) [Next](#)


To activate the Hook Clipboard means to intercept the data that are copied in the clipboard of Windows through the command Copy or pressing CTRL+C after having selected a text. After having intercepted them, they are analyzed and, if considered valid, that is that they contain an inclusive number in the range of frequency of the Icom 7000, they are used for setting frequency and operational mode in accord with the settaggio of the limits of band and mode.

The principal purpose of this function is I data exchange data with programs DXCluster.

Example of use with the program RxClus:

- 1) Activate the function Hook Clipboard
- 2) Activate RxClus
- 3) When it passes an interesting spot, select the frequency and press the keys Ctrl+C, the RTX will be planned on this frequency.

DX de G1HWY:	28689.0	K7QQ	WA	1551Z
DX de IK7AFM:	28654.8	N4ZZ	TN	1551Z
DX de IZ8BRI:	28690.0	WA4TII		1604Z

Select the frequency and press CTRL+C

For a correct exchange of data it is necessary to correctly shape the parameters <Communication with the Clipboard> in the [mask of configuration](#), besides to use the mask of [Setting Limits of band and mode](#) to select the mode of transmission corrected in base to the frequency of the spot.

Created with the Personal Edition of HelpNDoc: [News and information about help authoring tools and software](#)

PTT

Functions

[Top](#) [Previous](#) [Next](#)

PTT

[Top](#) [Previous](#) [Next](#)



Click on the microphone for switch transmission/reception, or, to press the chosen key in [configuration](#).

- [Setup] Open the [mask of configuration of the PTT](#)
- [1750Hz] Switch in transmission mode and send one note of 1750Hz for 1 second (need the [connection of the audio card](#) with the RTX)
- [Tune] Selects operating mode and power specifies in [configuration](#) and switch in transmission for the seconds configurate
- [Auto Tune] Start or Stop the automatic antenna tuner, requires an automatic tuner as the AT-180, the AH-4 or equivalent.

Tx Time

Reset the counter time of TX

- [Partial] Time of transmission from the start of this session of the program
- [Total] Time of transmission from the last time [Reset]

Created with the Personal Edition of HelpNDoc: [Create help files for the Qt Help Framework](#)

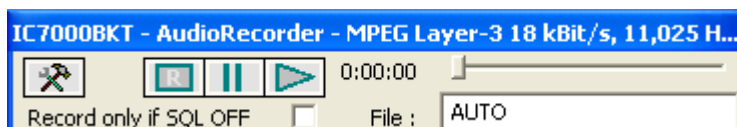
Recorder audio

Functions

[Top](#) [Previous](#) [Next](#)

AudioRecorder

[Top](#) [Previous](#) [Next](#)



The AudioRecorder is a digital recorder. For a corrected operation it must connect the audio card of the PC with the RTX (to see [connection](#)), one just chosen of the CoDec is also a lot important to use for the recording (to see [audio configuration](#)).



[Audio configuration](#)



Starts/stops the recording.

Suspends/resumes the recording or the reproduction.

Starts/stops the reproduction.

[Record only if SQL OFF] If checked, it starts the recording only in presence of a signal (SQL OFF) and suspended when the signal interrupts (SQL ON).

[File] It is possible to specify a file audio, if he leaves AUTO, to the beginning of every recording, will be produced a file by the name BKTymmddhhmmss.WAV, where yy=year, mm=month, dd=day, hh=hour, mm=minute, ss=second of beginning recording. Leaving AUTO and starting the play is opened a window from which to select the file to reproduce.

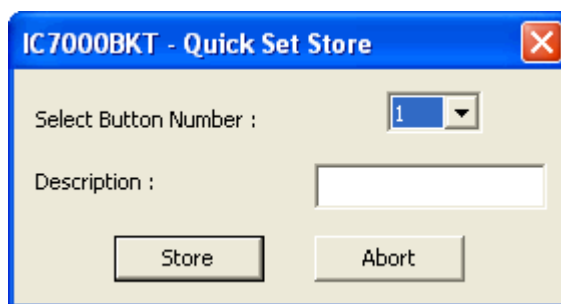
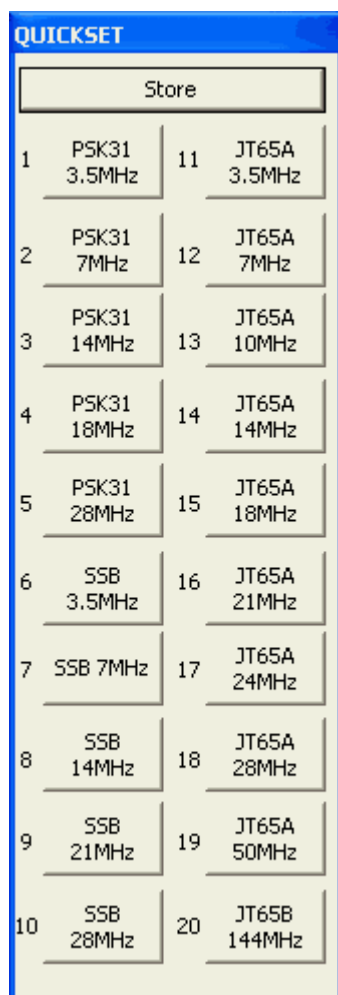
QuickSet

Functions

[Top](#) [Previous](#) [Next](#)

QuickSet

[Top](#) [Previous](#) [Next](#)



Each of the 20 keys stores: Frequency, Mode, VFO in use, Attenuator, Preamplifier, SQL, Power, RF, Filter, NR, NB and ANF.

Pressing the [Store] saves the current values of Frequency, Mode, VFO in use, Attenuator, Preamplifier, Squelch, Power, RF, Filter selected, NR, NB ANF and Compressor Mic State in the chosen key.

Custom Key

Function

[Top](#) [Previous](#) [Next](#)

Custom Key

[Top](#) [Previous](#) [Next](#)

Custom Key

1	Swap VFO A/B	2		3	
4		5		6	

The Custom Keys are programmable keys with CI-V commands (for a list of commands CI-V, see the manual RTX)

Click the button to send the command previously stored instead to change or enter a new command, click on the button with the right mouse button.

Custom Key Editor

Description : Swap VFO A/B

Command : 07B0

Save

Abort

The editor allows you to customize the custom key with the desired description and the command to be sent. The commands must be entered in hexadecimal and always with an even number of characters, for example, for the command 7 inert 07.

Various

List

Various


[Top](#) [Previous](#) [Next](#)

List

[Top](#) [Previous](#) [Next](#)

List of selected value

DTCS**Various**[Top](#) [Previous](#) [Next](#)**DTCS**[Top](#) [Previous](#) [Next](#)

IC7000BKT - Select DTCS code 

023	072	152	244	311	412	466	631
025	073	155	245	315	413	503	632
026	074	156	246	325	423	506	654
031	114	162	251	331	431	516	662
032	115	165	252	332	432	523	664
036	116	172	255	343	445	526	703
043	122	174	261	346	446	532	712
047	125	205	263	351	452	546	723
051	131	212	265	356	454	565	731
053	132	223	266	364	455	606	732
054	134	225	271	365	462	612	734
065	143	226	274	371	464	624	743
071	145	243	306	411	465	627	754


Tx Polarity

Rx Polarity

Select Tx Polarity, Rx Polarity and click on the wished code.

Created with the Personal Edition of HelpNDoc: [Easy to use tool to create HTML Help files and Help web sites](#)

Tone**Various**[Top](#) [Previous](#) [Next](#)**Tone**[Top](#) [Previous](#) [Next](#)

IC7000BKT - Select Tone 

67.0	79.7	94.8	110.9	131.8	156.7	171.3	186.2	203.5	229.1
69.3	82.5	97.4	114.8	136.5	159.8	173.8	189.9	206.5	233.6
71.9	85.4	100.0	118.8	141.3	162.2	177.3	192.8	210.7	241.8
74.4	88.5	103.5	123.0	146.2	165.5	179.9	196.6	218.1	250.3
77.0	91.5	107.2	127.3	151.4	167.9	183.5	199.5	225.7	254.1

Click on the code of wished Sub-Tone.

Created with the Personal Edition of HelpNDoc: [HelpNDoc's Project Analyzer: Incredible documentation assistant](#)

DUP

Various

[Top](#) [Previous](#) [Next](#)

DUP

[Top](#) [Previous](#) [Next](#)

Input the DUP value and press [OK].

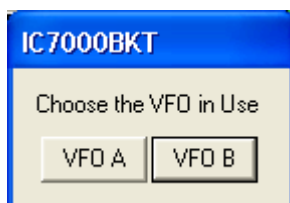
Created with the Personal Edition of HelpNDoc: [Free Kindle producer](#)

Chosen VFO

Various

[Top](#) [Previous](#) [Next](#)

Chosen VFO

[Top](#) [Previous](#) [Next](#)

Select the VFO currently in reception.

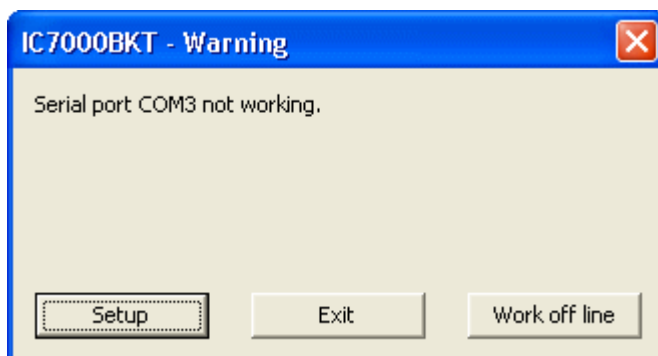
Created with the Personal Edition of HelpNDoc: [Free EBook and documentation generator](#)

OFF-LINE Mode

Various

[Top](#) [Previous](#) [Next](#)

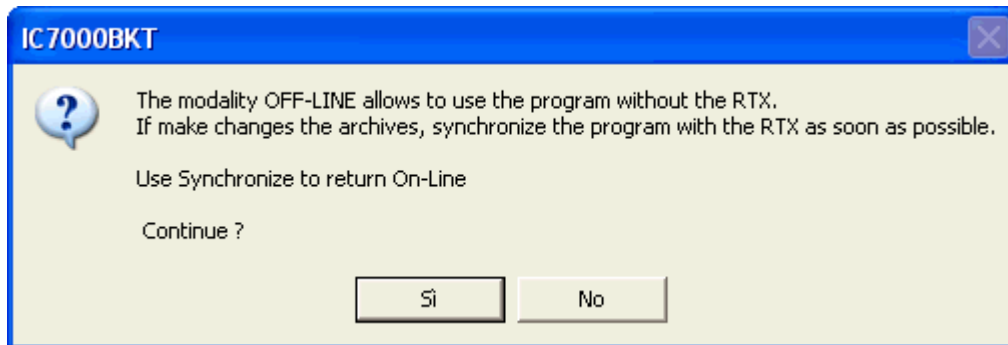
OFF-LINE Mode

[Top](#) [Previous](#) [Next](#)

Error from the serial port COM specified in [configuration](#).

[Exit] Close the program

[Work off line] Use the program not connected to the RTX, the modifications to the memory database will not be reflected in the RTX until the next [Synchronization](#)



For return ON-LINE use the Synchronize key in [main window](#).

Created with the Personal Edition of HelpNDoc: [Elevate Your Documentation with HelpNDoc's Project Analyzer Features](#)

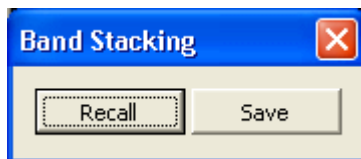
Band Stacking

Various

[Top](#) [Previous](#) [Next](#)

Band Stacking

[Top](#) [Previous](#) [Next](#)



[Recall] Loads frequency and operating mode previously saves in this operating stack
 [Save] Saves frequency and operating mode in the operating stack chosen

The triple operating stack allows to save three comprehensive memories for frequency band and operating mode.

Created with the Personal Edition of HelpNDoc: [Make Documentation a Breeze with HelpNDoc's Clean and Efficient User Interface](#)

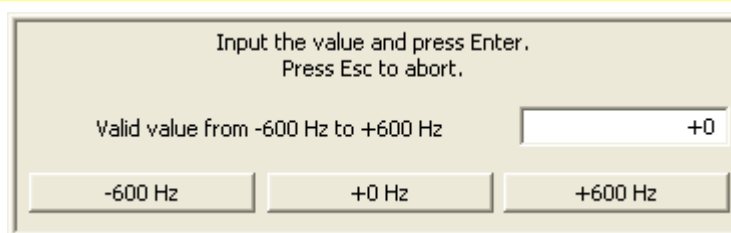
Numerical Input

Various

[Top](#) [Previous](#) [Next](#)

Numerical Input

[Top](#) [Previous](#) [Next](#)



Input a value comprised between the values specifies and press the Enter key, to cancel the input press

ESC .

Created with the Personal Edition of HelpNDoc: [Revolutionize Your Documentation Output with HelpNDoc's Stunning User Interface](#)

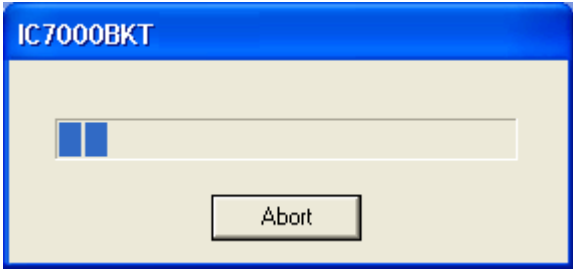
Progress Indicator

Various

[Top](#) [Previous](#) [Next](#)

Progress Indicator

[Top](#) [Previous](#) [Next](#)



Pointer of progress of the operation in course.

Created with the Personal Edition of HelpNDoc: [Experience the Power and Ease of Use of HelpNDoc for CHM Help File Generation](#)

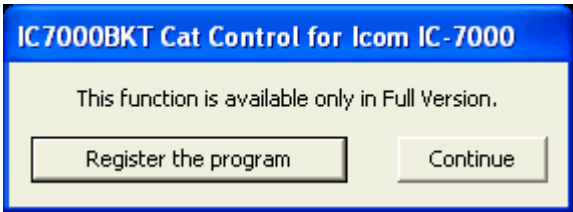
Function Full Version

Various

[Top](#) [Previous](#) [Next](#)

Function Full Version

[Top](#) [Previous](#) [Next](#)



The chosen function is available only in [Full version](#), however, if you have registered the Free version the received key allows to try these functions for a sure period.

- [Register the program]

[Continue]
- Opens [window to load the registration key](#) or to have information on the program registration

The execution of the program continues, the function won't be executed

Created with the Personal Edition of HelpNDoc: [Don't Let Unauthorized Users View Your PDFs: Learn How to Set Passwords](#)

Remote management by TCP/IP

Created with the Personal Edition of HelpNDoc: [Say Goodbye to Documentation Headaches with a Help Authoring Tool](#)

Remote management by TCP/IP

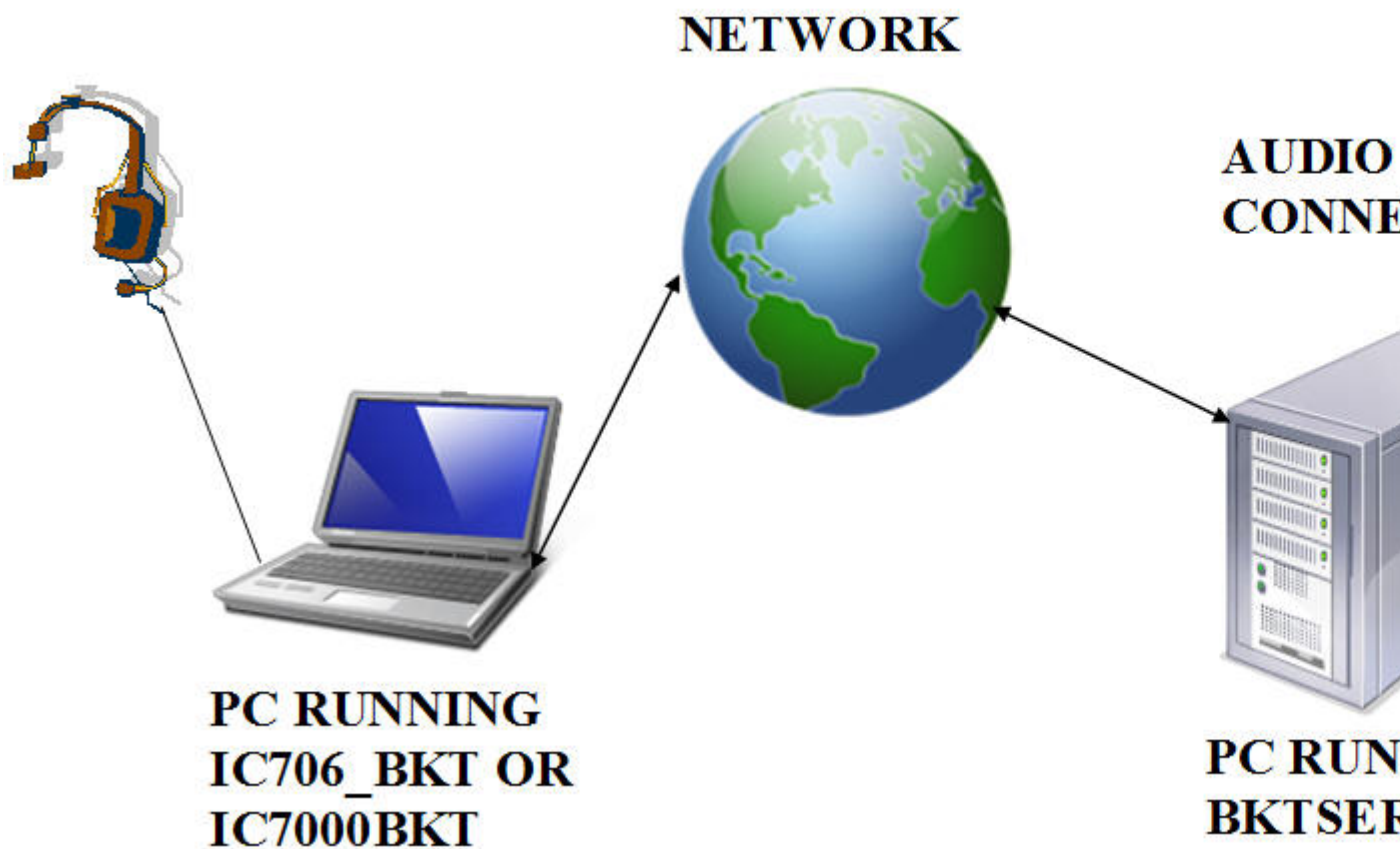
Remote management by TCP/IP

[Top](#) [Previous](#) [Next](#)

The remote management by TCP/IP is managed through two separate modules:

1. Server [BKTServer](#)
Running on the computer connected to the RTX.
2. Client [BKTClient](#)

Is necessary opening the communications port (default 7060 TCP) on the firewall.



Created with the Personal Edition of HelpNDoc: [Create cross-platform Qt Help files](#)

BKTClient

Created with the Personal Edition of HelpNDoc: [Make the switch to CHM with HelpNDoc's hassle-free WinHelp HLP to CHM conversion tool](#)

Access Control

BKTClient

[Top](#) [Previous](#) [Next](#)

Access Control

[Top](#) [Previous](#) [Next](#)



BKTClient start window.

[Connect to] Address IP of the PC server

[Password] Password connection, only used if required by the server.

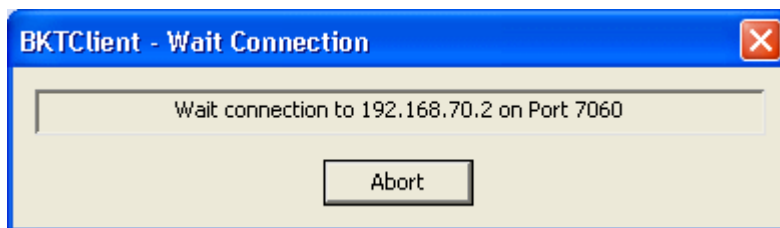
[Connect to startup] If selected not shown this window but connect directly to the server.

[Setup] [BKTClient configuration](#).

[Connect] Starts the connection to the server.

[Exit] Closes the program.

[Off-Line] Executes IC7000BKT or IC706_BKT without connecting it to the server.



Wait of the connection to the server.

Created with the Personal Edition of HelpNDoc: [Simplify Your Help Documentation Process with a Help Authoring Tool](#)

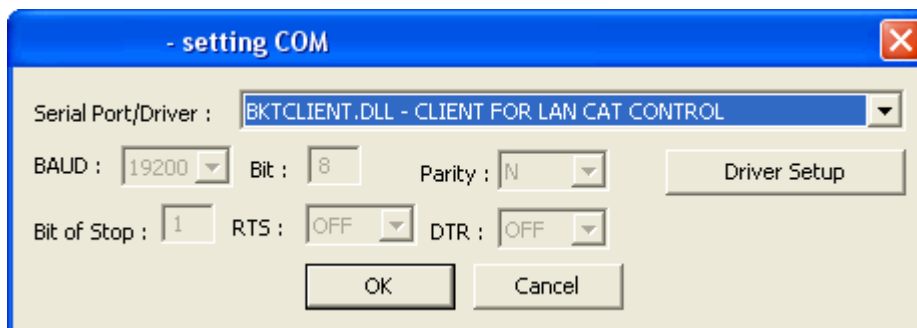
BKTClient

BKTClient

[Top](#) [Previous](#) [Next](#)

Select

[Top](#) [Previous](#) [Next](#)



For enable the driver BKTClient to select BKTCLIENT.DLL as Port in the serial port configuration of the program IC7000BKT or IC706_BKT.

[Driver Setup] [Configure the BKTClient](#).

Created with the Personal Edition of HelpNDoc: [Revolutionize Your Documentation Output with a Help](#)

Configuration

BKTClient

[Top](#) [Previous](#) [Next](#)

Configuration

[Top](#) [Previous](#) [Next](#)

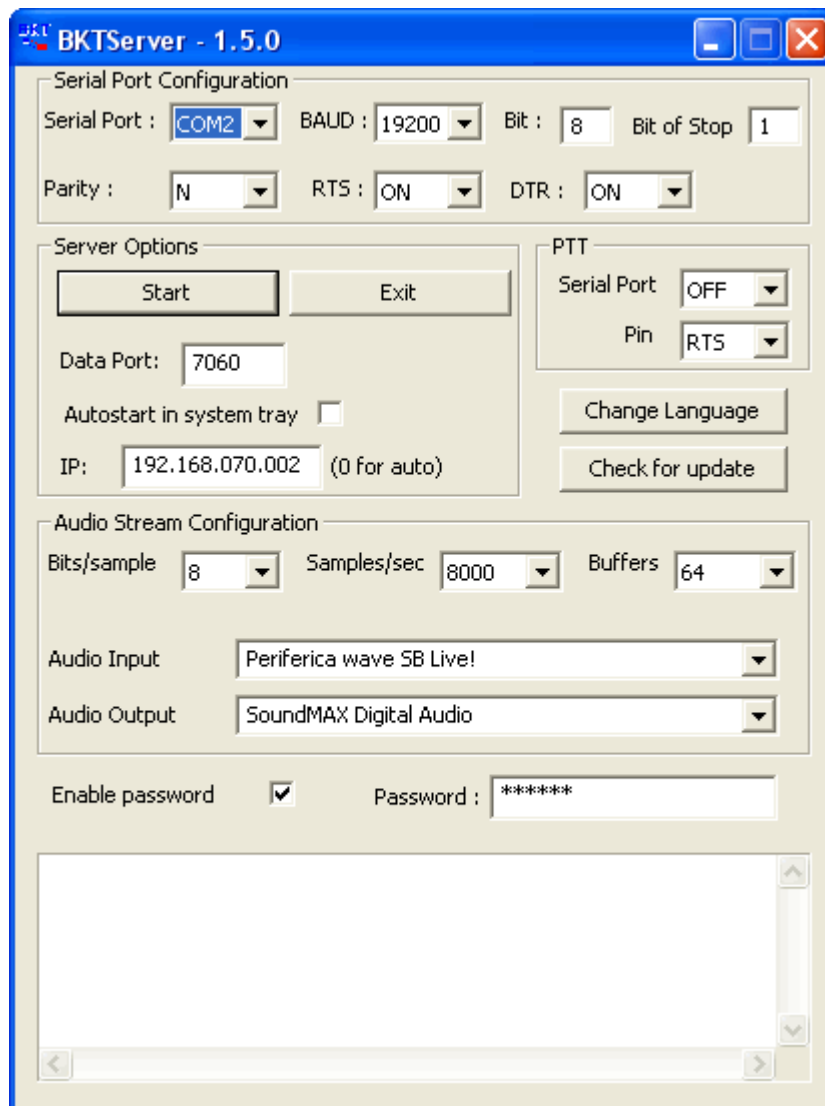
[Server]	IP address of the PC server with in execution BKTServer
[Port Com.]	LAN port of communication
[Local IP]	If you have multiple LAN cards you can specify the local IP address
[Enable Audio Support]	Enables the receipt/ transmission of the audio. For a correct connection the pc must have the audio card connected to the RTX, the pc client must have a microphone to transmit. Is not possible transmit audio file
[Send audio only when the PTT is ON]	Will transmit the audio from the client towards the server when the PTT is active, this allows to have a lower band transmission
[Audio input]	Select the audio card which the microphone is connected on a microphone entry from Windows mixer
[Audio output]	Select the audio card where to listen to the audio received from the server
[Password]	Password connection, only used if required by the server

 Created with the Personal Edition of HelpNDoc: [From Word to ePub or Kindle eBook: A Comprehensive Guide](#)

BKTServer

BKTServer

[Top](#) [Previous](#) [Next](#)



BKTServer must be in execution on the remote computer attached to the RTX.

[Serial Port Configuration]

Specify the parameters of connection with the RTX.

[Server Options]

Data Port: Port LAN of listening and communication (default = 7060) (she must be opened by the firewall).

Autostart in system tray: He starts the server automatically and reduces it to icon in the system tray.

IP: IP address of listening, if 000.000.000.000 BKTServer automatically selects the IP of the first net interface. Attention him IP choosing must be associate to a network interface of the computer where is in execution BKTServer.

[PTT]

Specifies the PTT parameters (see PTT configuration in the help of the program IC706_BKT.)

Not used for the Icom IC 7000.

Change Language: Program language to use.

Check for update: Check if new version its available. Need a internet connection.

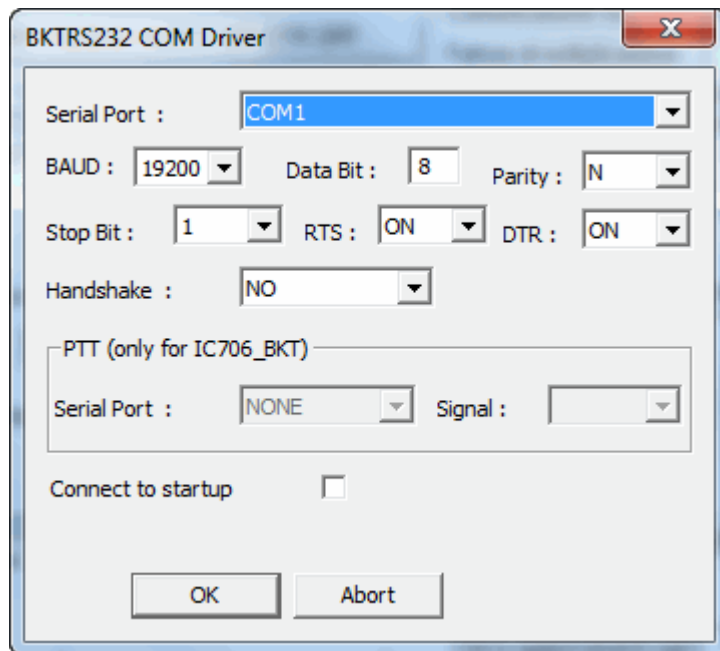
[Audio Stream Configuration]

Specify the parameters audio, increasing the values of Bits/sample and Samples/sec it will increase the fidelity of the audio but it needs greater band. Increase the Buffers if loss audio packets.

Enable password: if set only client with correct Password is available to connect.

BKTRS232 Alternative serial driver

BKTRS232 Alternative serial driver

[Top](#) [Previous](#) [Next](#)

Use this driver if you have communication problems with the RTX.

Interfacing with other programs

Interfacing with other programs

[Top](#) [Previous](#)

IC7000BKT includes a DDE server compatible with the suite DXLab that allows you to communicate with different programs including [MultiPSK](#), FLDigi with [Fldigi-DXLab Gateway](#) installed, [JT65_HF](#), SpotCollector and other compatible with Commander of DXLab suite.

For a proper functioning of the DDE server requires that the program IC7000BKT is executed BEFORE any other program.

If DDE doesn't work, it's possible to enable the LAN Protocol in the configuration to [use IC7000BKT with JTDX, WSJT-X, JS8CALL, MSHV](#), etc...

[Help Authoring Tool](#)
