

IC706_BKT - Icom IC-706 series CAT Control

Table of contents

Information on IC706_BKT	4
What it is	4
IC706_BKT Limitations	5
Connection and interfaces	5
Changelog	7
Program Registration	15
Function	16
Configuration	16
Configuration	16
COM Setting	17
PTT Setting	18
Language selection	19
Limits	19
Audio Setting	20
Programs startup	21
Utilities	22
Main Window	22
Hook Clipboard	25
Split	25
Memories	26
Memories	26
Memories PC	27
Memories PC	27
Reading Memories	28
Group Memories	29
Memories Radio	29
Memories Radio	29
Memories Synchronization	31
Memory Import / Export	31
Scanner	32
Scanner	32
Scanner Software	33
Scanning Log	33
Scanner Preset	34
Skeds	35
Skeds	35
Sked Activation	36
Create recur skeds	37
Delete skeds	37
AutoCQ	38
Custom Key	38
Plug-In	39
Plug-In Mangement	40
OnAir	40
Bands	41
PTT	42
Audio Recorder	42

Various	43
Select VFO	43
Communication Error	43
Band Stacking	44
Progress Indicator	44
Full Trial Function	45
Numerical Input	45
OFF-LINE Mode	45
Remote management by TCP/IP	46
Remote management by TCP/IP	46
BKTClient	47
Access Control	47
BKTClient	48
Configuration	48
BKTSERVER	49
BKTRS232 Alternative serial driver	51
Interfacing with other programs	51

Information on IC706_BKT

Created with the Personal Edition of HelpNDoc: [Easy CHM and documentation editor](#)

What it is

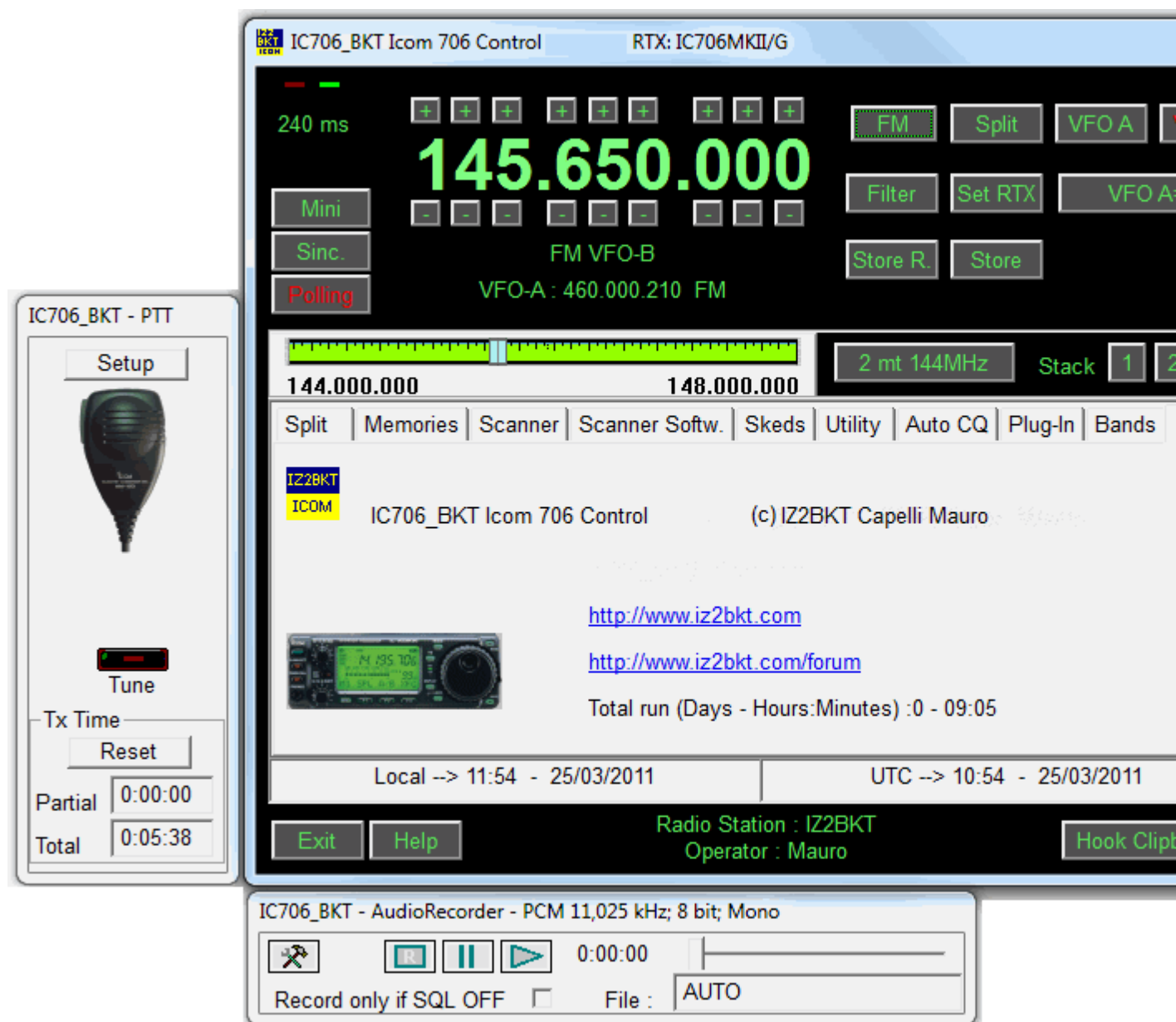
IC706_BKT

[Top](#) [Next](#)

What it is

[Top](#) [Next](#)

ATTENTION: this guide has been translated by an automatic system, errors.



The program I m proposing is for interface the transceiver Icom model 706 in its three versions to personal computer. To connect the socket locate behind Icom 706 and a small interface that converts the signal to adapt it to personal computer serial port. The program works on Windows 2000/XP/Vista/Windows 7 32 and 64 bit and may be configured for the serial port from the COM1 to COM20. The remote control is limited, to get over this limit, in some cases, the program will carry out more than an operation in sequence.

Created with the Personal Edition of HelpNDoc: [Effortlessly Convert Your Word Doc to an eBook: A Step-by-Step Guide](#)

IC706_BKT Limitations

IC706_BKT

[Top](#) [Previous](#) [Next](#)

IC706_BKT Limitations

[Top](#) [Previous](#) [Next](#)

For all models (IC-706 - IC-706MKII - IC-706MKII/G) :

It is not possible read or write memory names.
It is not possible read or write the subtone value.
It is not possible read the setting of the DUP

Only for IC-706 and IC-706MKII :

It is not possible read or write memory names.
It is not possible read or write the subtone value.
It is not possible read the setting of the DUP
It is not possible read the S-Meter
It is not possible read the SQL
It is not possible read or write the Attenuator
It is not possible read or write the Preamplificator
It is not possible read or write the AGC
It is not possible read or write the NB
It is not possible read or write the Tone
It is not possible read or write the TSQL
It is not possible read or write the Vox
It is not possible read or write the BKin
It is not possible read or write the Compressor
It is not possible read or write the Reverse

These limitations are hardware and not resolvable by computer software.

Created with the Personal Edition of HelpNDoc: [Benefits of a Help Authoring Tool](#)

Connection and interfaces

IC706_BKT

[Top](#) [Previous](#) [Next](#)

Connection and interfaces

The connection between PC serial port and CI-V entry of IC706 happens through an signal conversion interface you can find the following scheme in Fig.1 or of Fig. 2.

It is possible to experiment different speed of communication according to the power of your PC.

The program was also been tested with various USB and serial interfaces and with the [West Mountain Radio RIGtalk](#).

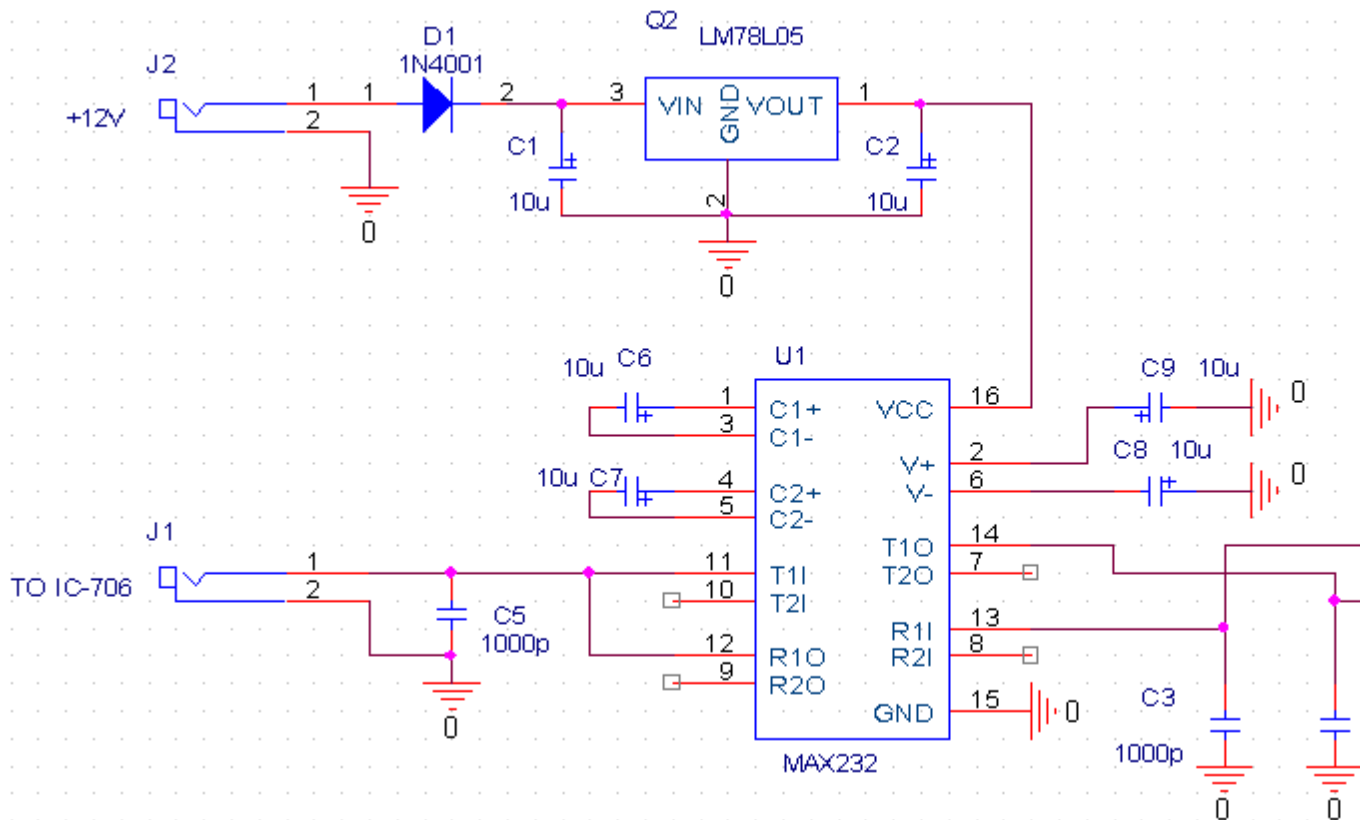
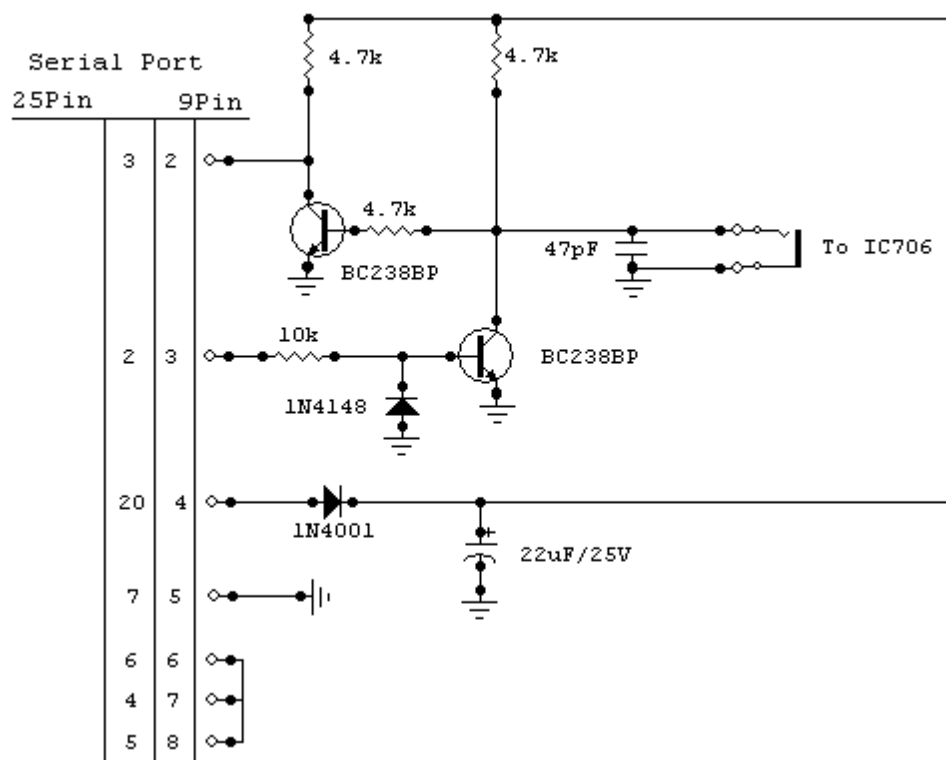


Fig. 1



To make to work the PTT is necessary a circuit of interface among the serial port of the PC and the RTX. You can use a systems, or, build the simple circuit schematized in Fig. 3. In this case, in the configuration PTT, to plan the field Pin PT

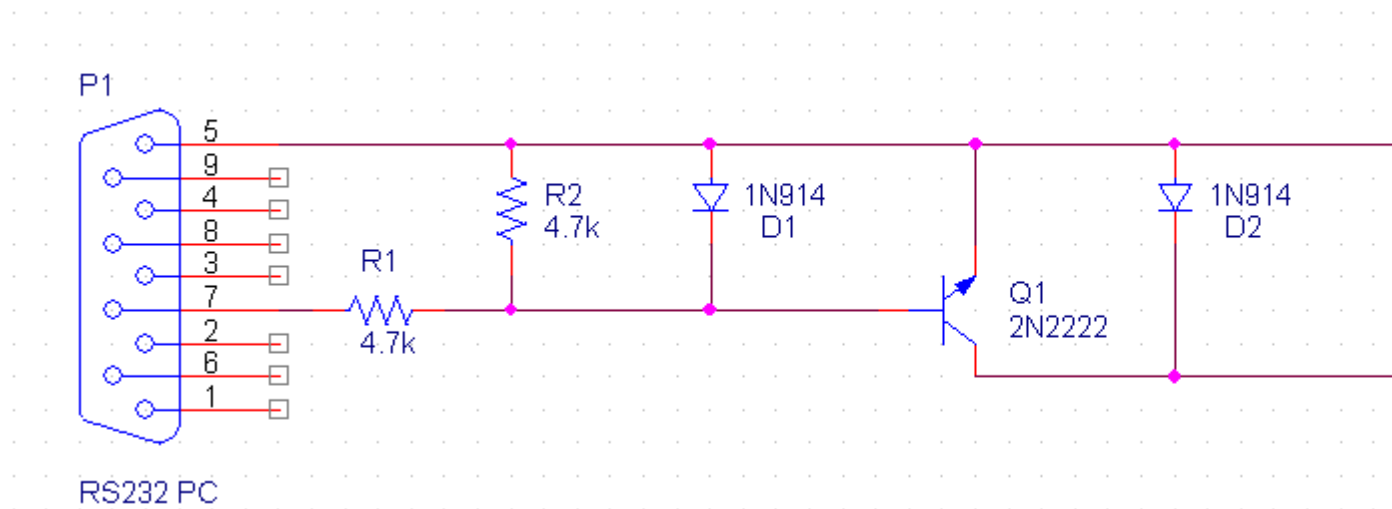
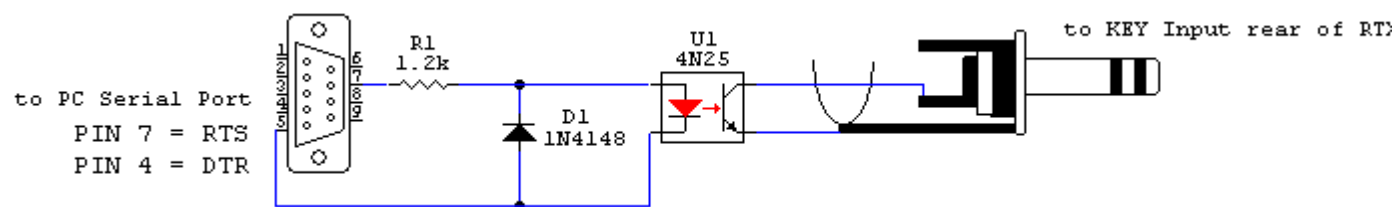


Fig. 3
Connection with the audio card of the PC

Interface for BKTkeyerCW Plug-in



Simple interface to transmit in CW with Plug-in BKTkeyerCW.

Created with the Personal Edition of HelpNDoc: [HelpNDoc's Project Analyzer: Incredible documentation assistant](#)

Changelog

IC706_BKT

[Top](#) [Previous](#) [Next](#)

Versions

[Top](#) [Previous](#) [Next](#)

Vers. 1.00 08/2000
First official release.

Vers. 2.00 04/2001
Adds function VFO A=B.
Adds the function to calculate the limits of band managed by the RTX.
Adds the ToolTips on the commands.
Adds the management of the bands radio amateur.
Adds the management of the scanner.
Adds the management of the memories on disk and of the RTX.
Improved the graphics.

Vers. 2.01 11/2001
Increased the dimension of the curtain of selection gang
Parameterized the description of the items of the tab
Possibility to change the code of activation

Vers. 3.00 02/2002

Possibility to manually plan the limits of frequency, this to resolve a bug of the model G that doesn't correctly pass the superscript of the maximum frequency available.
Possibility to stamp memories and memorized split.
Function of capture given by the clipboard of windows, this allows him exchange data with other programs, above all with the programs DXCluster (es. RxClus) and to automatically plan frequency and way according to the select spot.
Sequential reading of the 99 memories of the RTX and relative memorization as memories of the program.
Function of scanner totally managed by software.
Lifesaving function and restoration you date.
Possibility of 2 different ways of activation of the program.

Vers. 3.01 03/2002

Resolved the problem of the backup that failed if split or memories of program were not memorized.

Vers. 3.10 05/2002

Changed the green of the display with one to united shade.
Adds the visualization of date and now both place and UTC.
Adds the function skeds to program the activation of frequencies and ways to dates and pre-arranged schedules.

Vers. 3.11 19/05/2002

Adds the key to reduce to icon.
Adds the possibility to plan the offset for the calculation of the time UTC.

Vers. 3.50 05/10/2002

Optimized the management of the serial port.
Adds the commands for the version 706MKII/G.
I check on the id of the RTX in the setup.
The range is selected in base to the id of the RTX.
The management of the memories happens in separate windows and with grate with possibility to order the memories for name, frequency and any other field.
The scanning by software can be checked by the SQL and to produce a log.
The manual is in formed MHT for Windows Explorer.
Possibility to access the manual pressing F1 or the relative button on the principal mask.
Adds the control of the integrity of the executable.

Vers. 3.50.1 06/10/2002

Removed the error message of the serial port when the RTX is in transmission and when the program is closed.

Vers. 3.50.2 07/10/2002

Adds the Handshake TRAN for compatibility with the transistors interfaces.

Vers. 3.50.3 12/10/2002

Replaced the class CSerial with the old CSerialPort.

Vers. 3.50.4 14/10/2002

Corrected the error that if the select com is not valid it caused an error of protection.

Vers. 3.50.5 15/10/2002

Adds the possibility of setting the offset to 0 for the calculation of the time UTC.

Vers. 3.50.6 19/10/2002

Changed the manual by MHT to CHM.

Vers. 3.50.7 13/11/2002

Adds the control of the timeout of communication of the serial port.
When the attenuator is inserted it comes first past the command of preampli off.

Changed the manual in English with the translation of Rafael Rosa.

Vers. 3.50.8 17/11/2002

Repaired the translation.

Vers. 3.50.9 21/11/2002

Eliminated the bug that didn't finish the program if there is no communication with the RTX.

Vers. 3.50.10 29/11/2002

If the window of the memories radio or pc you/he/she is closed when to icon or maximized the dimension/position is not memorized.

Added the icons to the dialogs of the memories.

Adds the key Other Info in the dialog Recording.

Vers. 3.50.12 05/03/2003

Corrected the bug of variation frequency with the keys spin.

Possibility to change the background color and of the text of the displays.

Vers. 3.50.13 22/03/2003

Possibility of management of the signals RTS and DTR.

Vers. 3.60 12/07/2003

Adds the function PTT.

Removed the sort in the memories radio for problems of synchronization.

Improved the communication PC < - > RTX.

Improved the function Synchronizes in the memories radio.

Improved the function you Read Memories in the memories PC.

Adds the column tone in the memories PC.

Adds the possibility to use the key Canc to cancel the memories.

Adds the function active frequency on the log of the scanner software.

Recording Level 1 by web.

Corrected the control of the timeout.

Changed the code of level 2.

Help in formed contextual WinHelp activated from F1 on any mask.

Vers. 3.60.1 13/07/2003

Correct a bug that didn't write in the register the new code L2.

Vers. 3.60.2 20/07/2003

Correct a bug in the reading of the memories with split.

It memorizes the last selection chosen in the Laws Memories.

In the version English, systematized the visualization of the key Filter in the Split.

Vers. 3.70.0 01/10/2003

Adds the Audio Recorder

Possibility to record during the scanning software (only for MKII/G).

Adds the function of AutoCQ to effect up to 4 repetitive calls.

The memories PC can be divided in more groups.

The backup is compatible with the ZIP.

Vers. 3.70.1 09/01/2004

Correct a bug not to send the additional commands to the versions IC706 and IC706MKII.

Eliminated the problem of the block in to enter the configuration if the RTX doesn't respond to the commands.

Vers. 3.70.4 14/02/2004

Increase the performances of the serial communication.

Improved the scanner software.

Improved the reading of the memories.

Vers. 3.70.5 01/03/2004

Improved scanner log.

Vers. 3.71.0 01/05/2004

Adds support for the Icom IC718.

Vers. 3.71.1 24/05/2004

Removed Bug on RTX selection.

Vers. 3.80.0 30/09/2004

Correct the bug for right restore of Mode in various function.

Adds the total and partial calculation of the time of transmission.

Adds the choice of the key for the PTT.

Adds the key TUNE.

Adds the localization by file ascii.

Adds the management of external driver.

Adds the management of the commands from external programs.

Adds the group of programs startup.

Adds the driver BKTClient for the remote management by TCP/IP.

Vers. 3.81.0 04/10/2004

Adds scanning from memory in Scanner Software.

Improved timeout control.

Vers. 3.81.1 23/10/2004

Corrected a bug on Resume Scan in Scanner Software

Vers. 3.81.2 24/10/2004

Corrected a bug on Resume Scan in Scanner Software when in Memory Mode

Vers. 3.81.3 12/02/2005

Correct a bug on PTT OFF for Windows 98.

Vers. 3.81.4 19/03/2005

Corrected initialization of driver audio from external driver.

Vers. 3.82.0 16/05/2005

Now the registration for free version is not obligatory.

Changed the Level 1 with free version and Level 2 with full version.

Vers. 3.90.0 22/09/2005

Support for BKTEExtension.dll ver. 1.10.0.

Correct calculation time TX when the RTX is sent in TX by the external program.

Close the active plug-in to the exit of the program.

Reflect the commands of the BKTEExtensions to the active Plug-in.

Added the support for the execution of Plug-In.

Added the scale of tuning on the job frequency.

Added tab with the tuning scales the separated for bands.

Improved software scan.

Vers. 3.90.1 24/09/2005

Synchronized the Scanner Software with the tuning scale.

Vers. 3.90.2 28/09/2005

Correct a bug on tuning scale.

Vers. 3.93.0 23/12/2005

Improved tuning bar.

Added delete skeds from dates.
Added auto-delete old skeds on program startup.
Added recursive skeds.

Vers. 3.93.1 31/10/2006
Improved start-up programs.

Vers. 3.93.2 19/11/2006
Improved start-up programs.
Adds the support up to the COM20.

Vers. 4.0.0 10/11/2007
New graphical user interface.
Management of the wheel mouse.
Management right key of the mouse.
Management Band General.
Management Band Stacking.
New routine of Backup/Restore.
New communication engine.
Enable/Disable ToolTips.
Check automatic update.
New management of the RTX memories.
Importat/Export of the memories in CSV format.
Possibility to choose the input and output audio device.

Vers. 4.0.1 15/11/2007
Correct loading full version key.

Vers. 4.0.2 18/11/2007
Correct reding version from BKTEExtension.dll.
Update BKTEExtension.dll.

Vers. 4.0.3 19/05/2008
Correct a problem in load key.
Improved the compatibility with Windows Vista.

Vers. 4.0.4 07/06/2008
Support for [BKTClient](#) version 1.5.

Vers. 4.0.5 19/06/2008
Improved loading registration key.

Vers. 4.0.6 17/08/2008
Improved communication with the external drivers.
Improved management of serial port.
Changed the installation folder.

Vers. 4.0.7 01/09/2008
Improved configuration of external drivers.
Improved control of new versions.
Integrated driver BKTRS232.

Vers. 4.0.8 05/10/2008
Correct updatings control for BKTRS232.
Added support up to COM40.

Vers. 4.0.9 20/10/2008
Added setup in the ability to set the value of latency manually.
Improved the automatic calculation of latency when using BKTClient.

Improved appearance when working in OFF-LINE.
Included BKTClient 1.5.1.

Vers. 4.0.10 12/11/2008
Fixed bug in the selection of file to play with AudioRecorder.
Improved compatibility of AudioRecorder with BKTRS232.

Vers. 4.1.0 15/02/2009
Added function Reverse.
Fixed bug in the split.
Fixed bug for RTX IC-706 and IC-706MKII.

Vers. 4.2.0 01/05/2009
Added Scan Preset for managing the preset scans.
Improved the choice of serial port in the program configuration.

Vers. 4.2.1 27/05/2009
If flag "always on top" is off the masks of PTT and Audio Recorder will be minimized and restored with the main program window.

Vers. 4.2.2 25/07/2009
Improved ToolTips.

Vers. 4.2.3 07/08/2009
Adapted to the new website www.iz2bkt.com

Vers. 4.2.4 12/08/2009
Improved management of the timer.
Added the total time counter of use of the program.

Vers. 4.2.5 15/08/2009
Fixed a bug to work with the BKTRS232 driver.

Vers. 4.3.0 04/10/2009
Added edit and insert the memory directly from the grid.

Vers. 4.3.1 11/01/2010
Improved the Backup/Restore.

Vers. 4.3.2 11/04/2010
Added control the rights assigned to the installation folder.

Vers. 4.4.0 04/06/2010
Support DDE Server for interfacing with MultiPSK and other programs that use the DDE compatible with Commander and HRD.
Improved Split function.
Improved control program update.
Improved Backup/Restore.
Improved Tune.

Vers. 4.4.5 03/07/2010
Improved AutoCQ function.
Improved communication with the USB interfaces.

Vers. 4.4.6 26/07/2010
Fixed minor bug in using external drivers.

Vers. 4.4.7 18/08/2010
Fixed a bug about restoring the default in configuring limits bandwidth and mode.

BKTEExtension7k .dll ver 1.10.1: Correct the version returned by ExtGetVersionDLL ().

Vers. 4.5.0 21/10/2010

Added the Restore Default button in the program configuration.
Added font selection for the main and secondary windows.

Vers. 4.6.0 23/01/2011

Added control on writing rights of the configuration file.
Compiled for compatibility with Windows 2000.

Vers. 4.6.1 26/01/2011

Improved the memory synchronization.

Vers. 4.6.2 28/01/2011

Improved the memory reading.

Vers. 4.7.0 26/03/2011

Added the Polling mode.
Corrected minor problems (rescue position windows, size fields, correction window closure request registration).
Improved calculation of connection speed.
Improved the program startup.

Vers. 4.7.1 29/03/2011

Improved the management of the frequency with the mouse wheel.
Improved the sending of frequency and mode to programs that are linked via BKTEExtension or via DDE.

Vers. 4.8.0 29/04/2011

Finished the support for Windows 2000.
In the configuration COM is also possible to choose the COM not connected to any device.
Improved the saving and restoring the windows position.
Added registration in Skeds.

Vers. 4.9.0 30/12/2011

Added the function keys F2 through F9 plus the shift key to change the frequency.

Vers. 4.10.0 06/10/2012

Added control on frequency set by external programs.
Added driver BktDummy for operation in dummy mode.

Vers. 4.11.0 11/11/2012

Changed the management of external drivers for compatibility with Windows 8.

Vers. 4.11.1 24/11/2012

Updated BktClient 1.5.4:
- If you have multiple LAN cards you can specify the local IP address.
- Fixed bug translation.
Updated BktRS232 1.0.5:
- Fixed bug translation.

Vers. 4.12.0 23/12/2012

Add BKTClient2.

Vers. 4.12.1 10/02/2013

Improved serial communication.

Vers. 4.13.0 10/03/2013

Added interface minimized.
Improved color management.

Added reset button position windows in Utility.
Added in the TAB Utility the possibility to show/hide the PTT, Audio Recorder and the QuickSet.
Autoload registration key if saved in the program folder.
Fixed some minor bugs.

Vers. 4.13.1 16/05/2013

Fixed some bugs and improved the import of memories from CSV files.

Vers. 4.14.0 01/01/2014

Integrate BktExtension ver. 1.13.0 compatible with BktRemote Suite.

Vers. 4.14.1 11/01/2014

Improved management of the registration key.

Vers. 4.15.0 24/02/2014

Includes BktExtension ver. 1.14.0 with management memories selection.

Vers. 4.15.1 26/07/2014

Includes BktExtension ver. 1.15.0.

Vers. 4.15.2 13/08/2014

Include BktExtension ver. 1.17.0.

Vers. 4.15.3 11/10/2014

Automatic restart after configuration.

Vers. 4.15.4 28/12/2014

Correct trial version for 2015.

Vers. 4.16.0 26/01/2015

Added support for OnAir status on HrdLog and EnzoLog.

Improved loading of registration keys.

Changed the default font with Arial 9 points.

Improved the installation.

Vers. 4.17.0 09/05/2015

Added CAT support for HrdLog.

Vers. 4.17.1 19/07/2015

Support BKTEExtension 1.18.0

Vers. 4.18.0 29/08/2015

Adding [Custom Key](#)

Support BKTEExtension 1.19.0

Vers. 4.18.1 10/10/2015

Support BktExtension 1.20.0

Vers. 4.18.2 03/01/2016

Support BktExtension 1.21.0

Vers. 4.18.3 27/02/2016

View the version in use (Free, Full or Trial)

Vers. 4.18.4 18/08/2016

New version 1.0.1 of OnAir

Correct link to the forum

Vers. 4.19.0 07/10/2017

Support BktExtension 1.22.0 for BktDxCluster Android

Vers. 4.19.1 21/08/2018

Link update

Vers. 4.19.2 02/01/2021

Improved audio device management

Vers. 4.19.3 02/06/2023

Correct key loading for the trial version

Created with the Personal Edition of HelpNDoc: [Generate Kindle eBooks with ease](#)

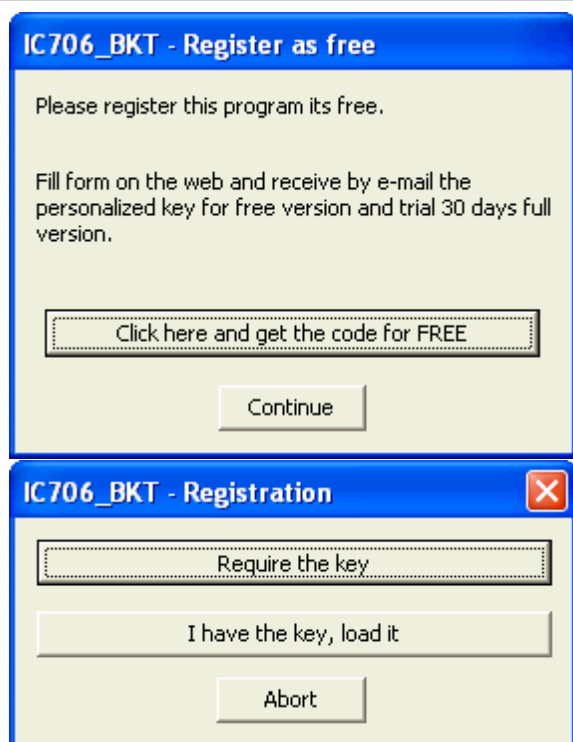
Program Registration

IC706_BKT

[Top](#) [Previous](#) [Next](#)

Program Registration

[Top](#) [Previous](#) [Next](#)



For the information on program registration, please, look on:

http://www.iz2bkt.com/ic706_bkt/reg_en.html.

The key of activation is sent by e-mail as attached file (ATTENTION: if use Antispam software authorizes iz2bkt@alice.it).

The key for free version is totally free and allows the use of a lot of the functions of the program and to try for 30 days or 30 program execution the functions of the full version.

In order to install the activation key:

1. Save in a folder the file <call.ic706_bkt.dat> attached to the email received (call is yours callsign specified in the registration form)
2. Start program IC706_BKT
3. Click on the key [I have the key, load it]
4. Select the folder and the file saved to point 1 and press [Open]

5. Backup the activation key on a floppy or a removable device

Created with the Personal Edition of HelpNDoc: [Benefits of a Help Authoring Tool](#)

Function

Created with the Personal Edition of HelpNDoc: [Streamline Your Documentation Process with HelpNDoc's Intuitive Interface](#)

Configuration

Created with the Personal Edition of HelpNDoc: [Free iPhone documentation generator](#)

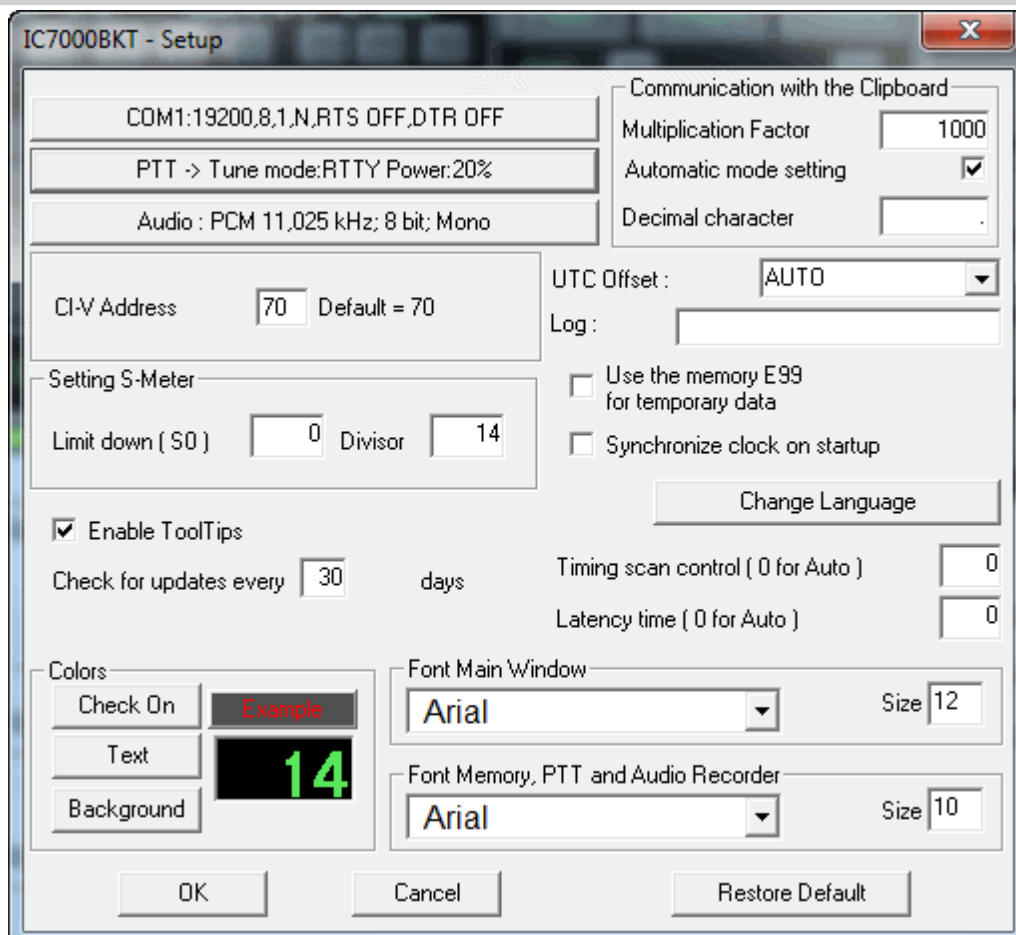
Configuration

Configuration

[Top](#) [Previous](#) [Next](#)

Main

[Top](#) [Previous](#) [Next](#)



General configuration of the program.

Is important that the values of communication of the serial port and the address CIV that has to exactly correspond with the values CI-V BAUD and CI-V ADDRES in the IC706. You advises to care the parameter CI-V BAUD of the transceiver as Auto.

[COM.....] [Serial Port and external driver setting.](#)

- [PTT] [PTT Setting.](#)
- [Audio.....] [Audio Setting.](#)
- [Icom 706 MKII/G] set only if the model IC706MKII/G is used.
- [Setting S-Meter] plan the values to make to correspond the value read by the S-Meter of the program with that of the RTX.
- [Updating in milliseconds] milliseconds of interval between a reading and the following one of the S-Meter, this value is automatically calculated.
- [Colors] Choose the colors for display and the keys.
- [Font Size] Font size for the frequency display.
- [Communication by the Clipboard] allows to repair the parameters for a correct exchange of the data with the programs DXCluster.
- [UTC Offset] points out the bewilderment in times among the time UTC and that local. If put to [Auto] for the calculation of the time UTC is used the settings of Windows.
- [Log] Generally must be let empty, point out the name of a file in which to save the Log of exchange dates on the serial port.
- If put to 0 the timeout of communication is not checked between the RTX and the program, otherwise to plan a value in second that it points out the maximum time of attended for the answer to the commands sent to the RTX.
- [Change Language] [select the language.](#)
- [Enable ToolTips] Enable the help balloons
- [Check for updates every] Interval of days for the automatic control of possible updatings of the program. If put to 0 not effect the control.
- [Latency time (0 for Auto)] Work time in millisecondi, set to zero for the automatic calculation to the start. A too low latency time might cause the data loss between the pc and the rtx, a too high time slows down the reading of the data of the rtx.
- [Font Main Window] Select the font to be used for the main window, [Size] to enlarge or shrink the main window size.
- [Font Memory, PTT e Audio Recorder] Select the font to be used for the secondary window, [Size] to enlarge or shrink the secondary window size.
- [Restore Default] Restore the default parameters of the program.

Created with the Personal Edition of HelpNDoc: [Full-featured EBook editor](#)

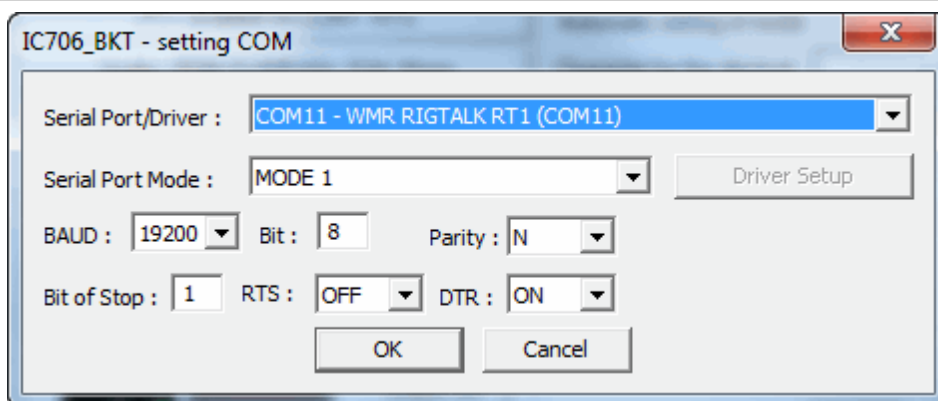
COM Setting

Configuration

[Top](#) [Previous](#) [Next](#)

COM Setting

[Top](#) [Previous](#) [Next](#)



These parameters are essential for a good operation of the program.

If you have other interfaces connected on the same serial ports (es. interfaces for PSK31), it **needs RTS or DTR to OFF** to avoid to send in transmission the RTX when he enters the program.

Its possible to select an external driver (es. BKTClient for the remote management by TCP/IP), in

such case will be activated the key [Driver Setup].

Selecting the driver **BktDummy** the program will work in dummy mode also without the RTX connected.

[Serial Port Mode]: for USB interfaces or for [RIGtalk of West Mountain Radio](#) use MODE 1.

If there are connection problems try this:

- Change the [Serial Port Mode]
- Change the RTS and/or DTR
- Down the connection speed from 19200 to 9600 BAUD or lower
- Try to use [BKTRS232 driver](#)

Created with the Personal Edition of HelpNDoc: [Free Kindle producer](#)

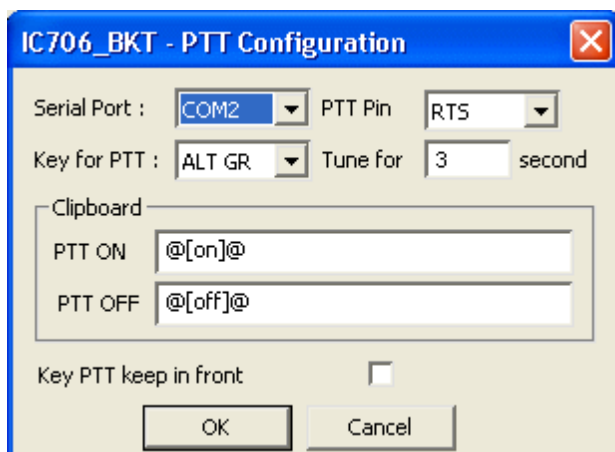
PTT Setting

Configuration

[Top](#) [Previous](#) [Next](#)

PTT Setting

[Top](#) [Previous](#) [Next](#)



Configuration of the management of the PTT, that is the possibility to send the RTX in transmission through the program. To make to work the PTT needs to have an interface for digital ways (es PSK31) or to build the circuit visible in the [section connection](#).

[Serial Port]	serial ports of the PC to which the circuit PTT is connected, can be the same one of the program.
[PTT Pin]	pin of the serial port to which the circuit PTT is connected.
[Key for PTT]	select the key to use for PTT.
[Tune]	max time for tuning.
[Clipboard]	if the sequence of characters
[PTT ON]	is copied in the clipboard of Windows, the RTX is sent in transmission.
[PTT OFF]	it is the sequence to put the RTX in reception.
[Key PTT keep in front]	if activated, the key PTT is always maintained in front of all the other windows.

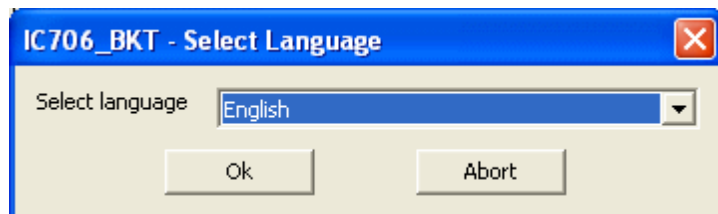
Created with the Personal Edition of HelpNDoc: [Don't be left in the past: convert your WinHelp HLP help files to CHM with HelpNDoc](#)

Language selection

Configuration

[Top](#) [Previous](#) [Next](#)

Language selection

[Top](#) [Previous](#) [Next](#)


Select from the list the preferred language.

You can add languages by following this procedure:

1. Copy the file English.lng in the name of the language you want (eg. Franch.lng)
2. Edit with Notepad or BKTLocalize the file created in step 1
3. For each row, after the equals sign, put the phrase translated being careful not to change the codes (%1-% s-% n-\n-etc. ..)
4. Send me the translated file if you want to be published on the website of the programme

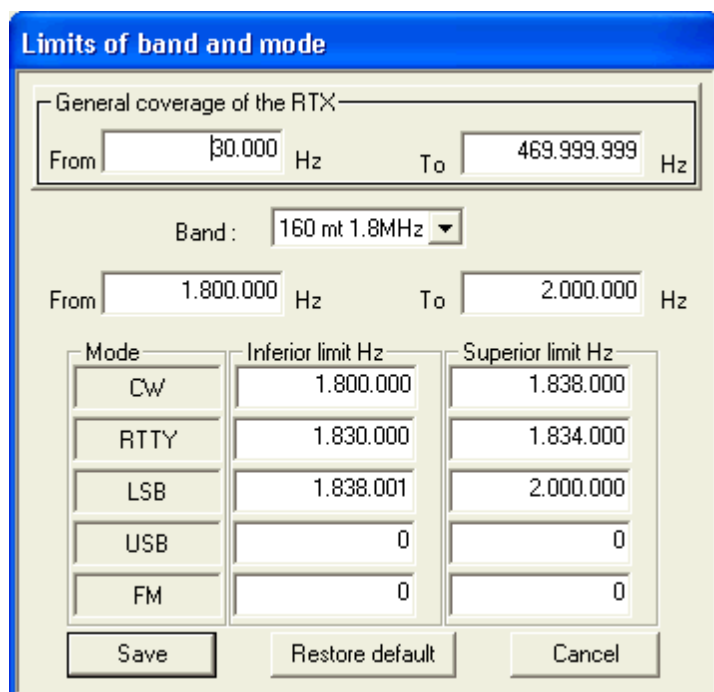
Created with the Personal Edition of HelpNDoc: [Streamline Your Documentation Process with HelpNDoc's Intuitive Interface](#)

Limits

Configuration

[Top](#) [Previous](#) [Next](#)

Limits

[Top](#) [Previous](#) [Next](#)


From this mask it is possible to define the limits of coverage for the RTX and for every radioamateur

bands.

ATTENTION: all the values of frequency are in Hz.

Created with the Personal Edition of HelpNDoc: [Streamline Your Documentation Process with a Help Authoring Tool](#)

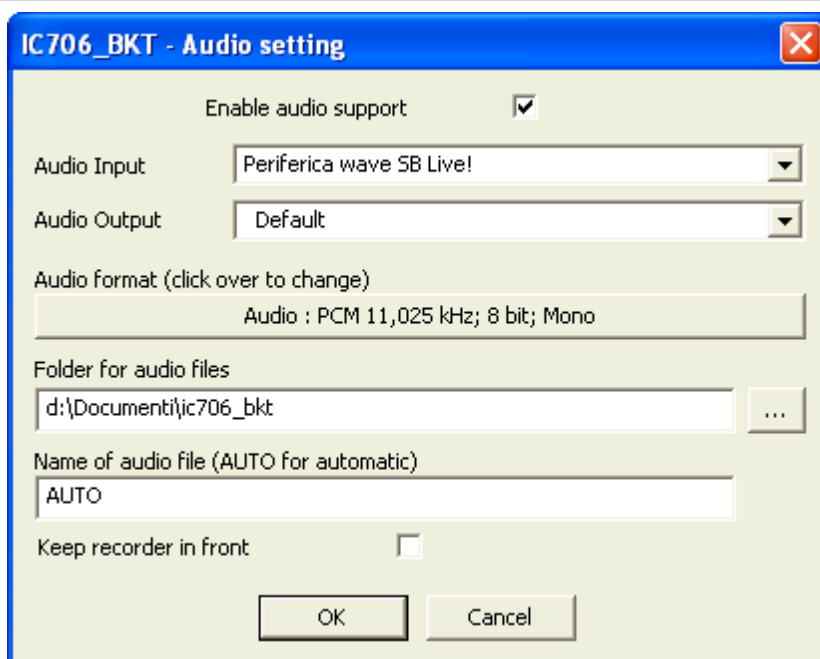
Audio Setting

Configuration

[Top](#) [Previous](#) [Next](#)

Audio Setting

[Top](#) [Previous](#) [Next](#)



[enable/disable the audio support

E
n
a
b
l
e
a
u
d
i
o
s
u
p
p
o
r
t
]

[Audio Input]	Chose the audio device for input. Default for windows default device.
[Audio Output]	Chose the audio device for output. Default for windows default device.
[Audio format]	it allows to choose the format audio to use during the recording. To record vocal communications, suggestion to install a CoDec MP3 and to choose the inferior quality. With the visible configuration in figure, a hour of recording occupies around 3,5Mb of disk. To record digital communications is worthwhile to use the PCM format, in this case the occupation on disk will be very high. The format of the files audio is WAV and is compatible with the Windows Media Player.
[Folder for audio files]	to point out the folder where the files audio will be saved. If the field is empty, is used the folder where the program is installed.
[Name of audio file]	it is possible to specify a default name to use for the files audio, if he leaves AUTO, to the beginning of every recording, a file will be produced by the name BKTymmddhhmmss.WAV, where yy=year, mm=month, dd=day, hh=hour, mm=minute and ss=second of beginning recording.
[Recorder keep in front]	if activated, the Audio Recorder is always maintained in front of all the other windows.

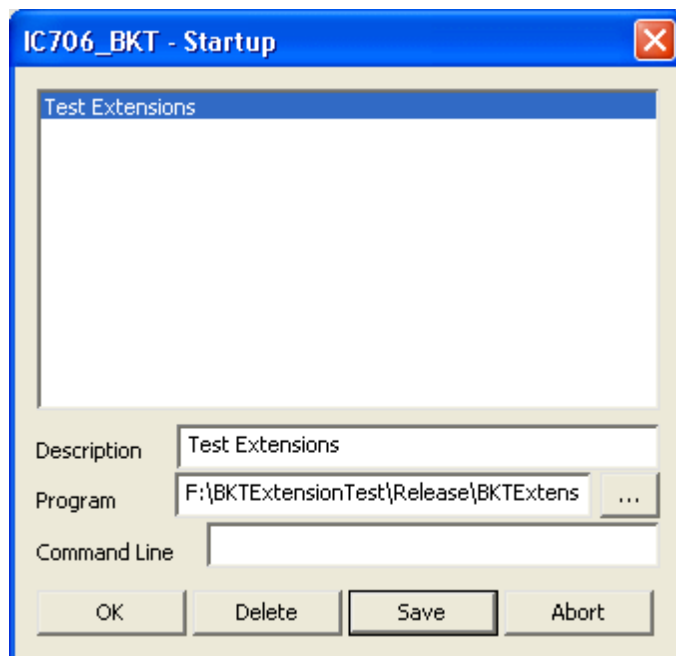
Created with the Personal Edition of HelpNDoc: [iPhone web sites made easy](#)

Programs startup

Configuration

[Top](#) [Previous](#) [Next](#)

Start programs

[Top](#) [Previous](#) [Next](#)


The programs specified in this window will be started to the start of IC706_BKT.

For every program to introduce:

Description: description of the program

Program: program inclusive of path, ex. c:\windows\notepad.exe

Parameters: parameters for the program

[...] find the program

[OK] closes the window saving the possible changes

[Delete]	delete the selected program
[Save]	saves the introduced data
[Abort]	closes the window without saving the possible changes

Created with the Personal Edition of HelpNDoc: [Streamline Your Documentation Process with HelpNDoc's Intuitive Interface](#)

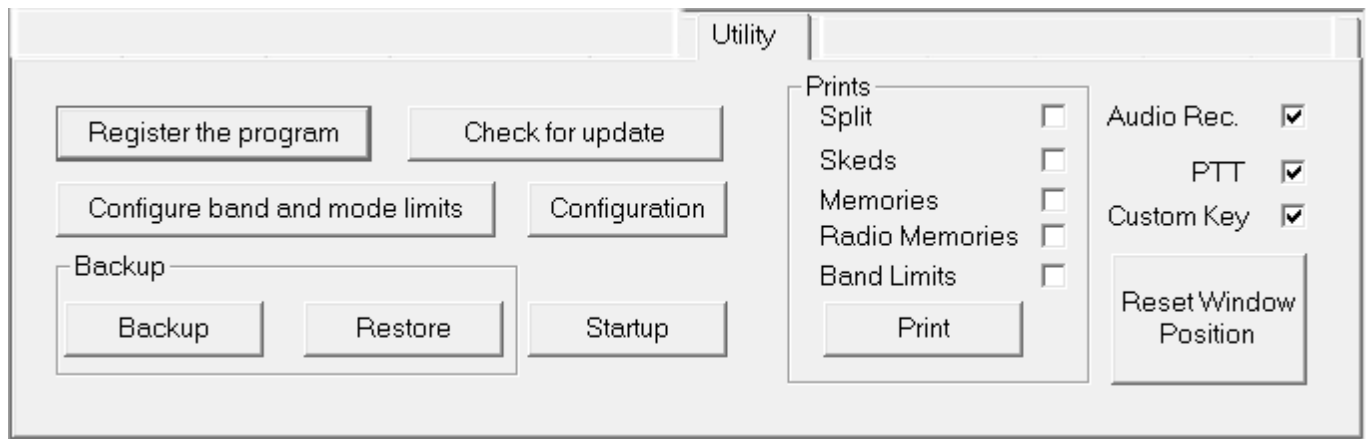
Utilities

Function

[Top](#) [Previous](#) [Next](#)

Utilities

[Top](#) [Previous](#) [Next](#)



[Register full version]	Connect to web site for the registration of the program
[Check for update]	Controls if there are new versions of the program (require active Internet connection)
[Configuration]	Configuration of the program
[Startup]	Select the programs for running with IC706_BKT
[Configure limits of band and mode]	Configure limits of band and mode
Backup	
Save the Split, Skeds, Memories and Limits of band and mode in the file IC706_BKT.ZIP.	
[Restore]	Restore the dats from a file of backup
Prints	
Mark the files that are wanted to stamp and to press the key [Print]	
[Audio Rec.]	Show/Hide the Audio Recorder window
[PTT]	Show/Hide the PTT window
[Custom Key]	Show/Hide the Custom Key window
[Reset Window Position]	Reset to the default position of the various program windows

Created with the Personal Edition of HelpNDoc: [Effortlessly Convert Your Markdown Content with HelpNDoc](#)

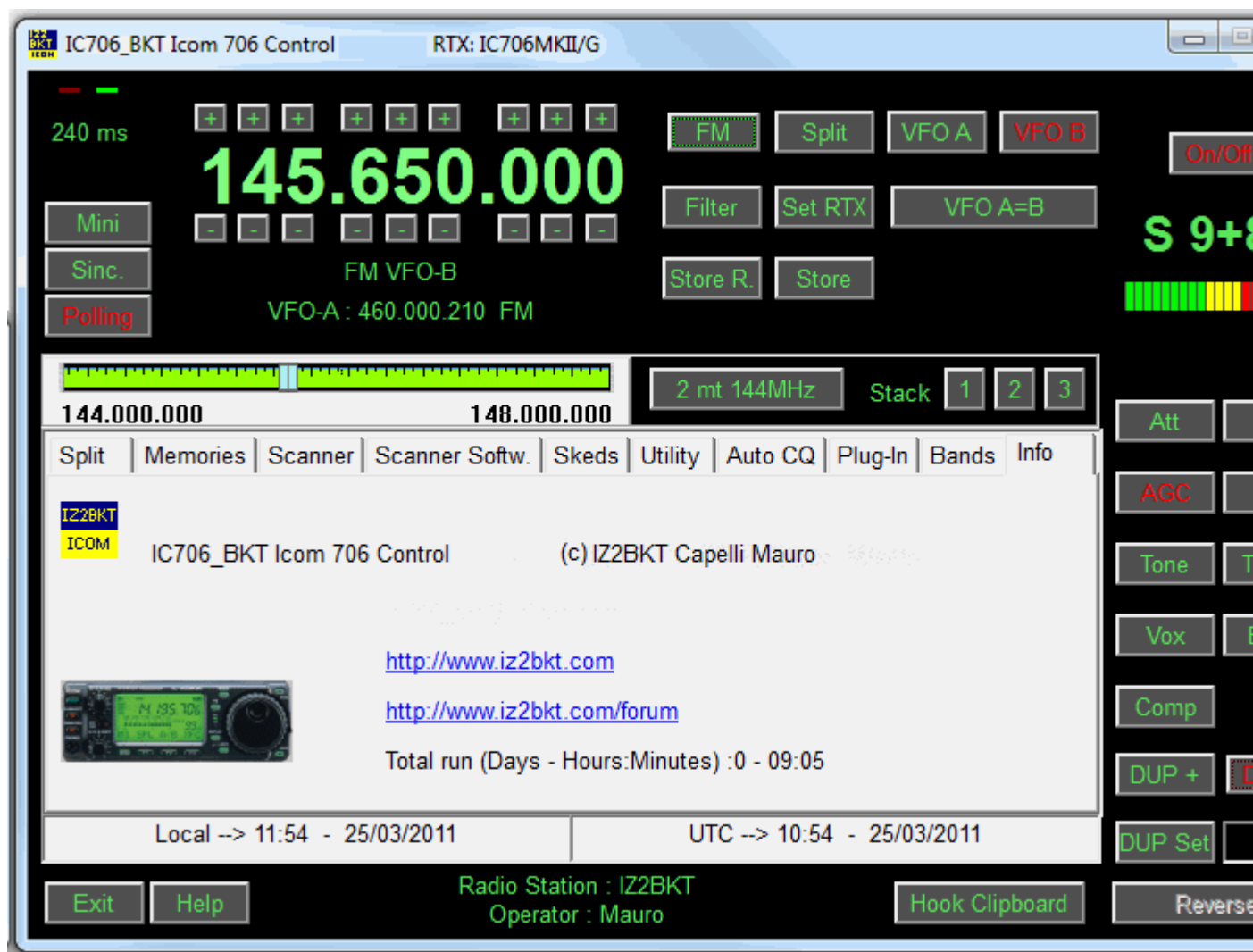
Main Window

Function

[Top](#) [Previous](#) [Next](#)

Main Window

[Top](#) [Previous](#) [Next](#)



In the main window they are present the commands of great use, **stopping itself with the mouse on a key a Tool Tips appear with the description of the command**, while, click with the mouse right key on the Tuning Bar to input **numerically**.

The two Led green/red places up to right of the window blink to the passage of data between program and RTX.

As to change frequency:

- Click with the right mouse button on the frequency, enter the frequency in Hz and press the Enter key.
- Use the keys + and - disposed to the edges of the frequency display.
- Position the mouse on the frequency display and use the wheel of the mouse.
- Use the function keys F2 through F9 and Shift.

Information on the main window:

- Date and hour in local format and UTC.
- Information on the Radio station and Operator.
- Tuning bar. Click and drag the pointer to change frequency. The bar will become of red color when the RTX is synchronized with the [radioamateur bands](http://www.iz2bkt.com). Click with the mouse right key for [numerical input](http://www.iz2bkt.com) of the frequency.

Keys:

All the keys are easily identifiable, signal:

- [Main] Hides all windows and activates the interface minimized (see below)
- [Sync.] Reset and restart the connection between RTX and program.
- [Polling] If active periodically reads the values of the rtx controls, if deactivated controls only SMeter, Frequency and Power. If you are using the rtx remotely via LAN/internet or you are using a slow connection to the rtx is recommended to keep it active.

	disable Polling.
[Store R.]	Memorizes the active values (frequency, operational mode, etc...) in one of the Radio Memories .
[Store]	Memorizes the active values (frequency, operational mode, etc...) in one of the PC Memories .
[Band Stacking]	Saves/Recalls frequency and operating mode from the operating stacks.
[Help]	Visualizes this guide.
[Exit]	Exits from the program.
[Hook Clipboard]	Enable/disable the elaboration of the data of the clipboard of Windows.

G Extensions

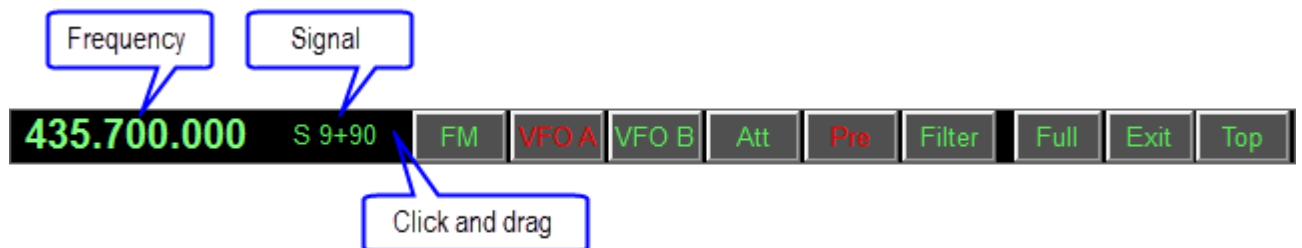
The section 706MKIIG appear only if an Icom IC706MKII/G or IC718 is used and manages the new functions CI-V added ICOM in this models.



[On/Off]	Enable/disable the SMeter. Can be necessary to disable the SMeter if a particularly slow computer is used, avoiding decelerations in the operations.
[DUP Set]	Set the value of the mode Duplex, activate with DUP + and DUP -. It is not possible to notice from the RT that Duplex is planned.

Note: these commands vary second the model of the RTX.

INTERFACE MINIMIZED:



Activated by the button [Mini] allows to manage all functions of the radio, taking up little space on the screen.

Hook Clipboard

Function

[Top](#) [Previous](#) [Next](#)

Hook Clipboard

[Top](#) [Previous](#) [Next](#)



To activate the Hook Clipboard means to intercept the data that are copied in the clipboard of Windows through the command Copy or pressing CTRL+C after having selected a text. After having intercepted them, they are analyzed and, if considered valid, that is that they contain an inclusive number in the range of frequency of the Icom 706, they are used for setting frequency and operational mode in accord with the settaggio of the [limits of band and mode](#).

The principal purpose of this function is I data exchange data with programs DXCluster.

Example of use with the program RxClus:

- 1) Activate the function Hook Clipboard
- 2) Activate RxClus
- 3) Wwhen it passes an interesting spot, select the frequency and press the keys Ctrl+C, the RTX will be planned on this frequency.

DX de G1HWY:	28689.0	K7QQ	WA	15512
DX de IK7AFM:	28654.8	N4ZZ	TN	15512
DX de IZ8BRI:	28690.0	WA4TII		16042

Selected frequency, to press Ctrl+C

For a correct exchange of data it is necessary to correctly shape the parameters of the program in the [mask of configuration](#), besides to use the mask of [Setting Limits of band and mode](#) to select the mode of transmission corrected in base to the frequency of the spot.

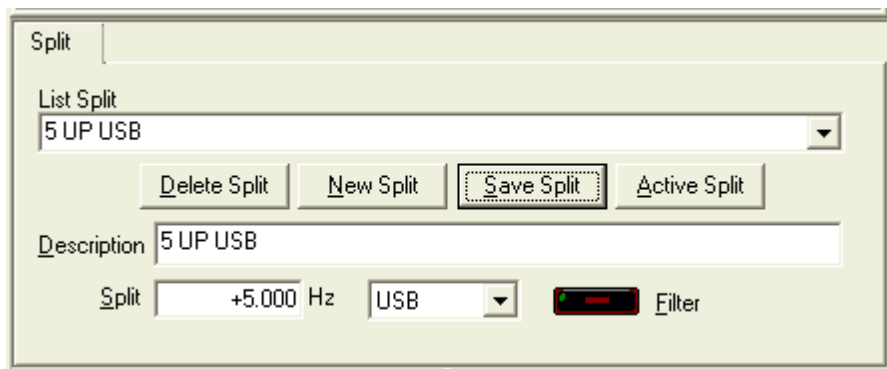
Split

Function

[Top](#) [Previous](#) [Next](#)

Split

[Top](#) [Previous](#) [Next](#)



It allows of setting the splits, that is, the possibility to receive and to transmit on two different frequencies inside the same band.

With the key [Active split] the bewilderment of the frequency in use is calculated and planned on the according to VFO that will be used only in transmission. To deactivate the Split to use the relative key on the [principal mask](#).

ATTENTION: the frequency of split is in Hz.

Created with the Personal Edition of HelpNDoc: [From Word to ePub or Kindle eBook: A Comprehensive Guide](#)

Memories

Created with the Personal Edition of HelpNDoc: [Maximize Your Productivity with a Help Authoring Tool](#)

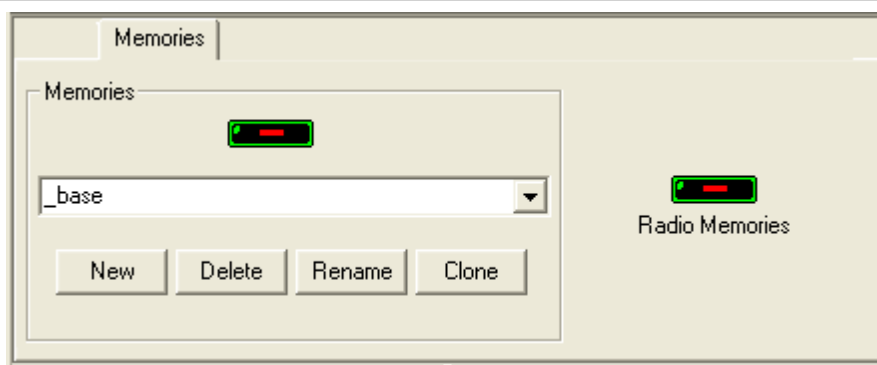
Memories

Memories

[Top](#) [Previous](#) [Next](#)

Memories

[Top](#) [Previous](#) [Next](#)



From this panel it is possible enable/disable the visualization of the masks of management memories.

[\[Memories\]](#) to manage a database of the memories on PC, doesn't have limits of capacity and it allows a total management of the values to memorize.

These memories can be divided in groups:

- [New] Creates a new group of memories
- [Delete] Cancels the selected group of memories
- [Rename] Changes name to the selected group of memories
- [Clone] Duplicates the selected group of memories

[[Memories of RTX](#)] to manage only the 99 memories of the RTX.

Created with the Personal Edition of HelpNDoc: [Effortlessly Convert Your Word Doc to an eBook: A Step-by-Step Guide](#)

Memories PC

Created with the Personal Edition of HelpNDoc: [Generate EPub eBooks with ease](#)

Memories PC

Memories PC

[Top](#) [Previous](#) [Next](#)

Memories PC

IC706_BKT - Memories

Description	VFO-A	Mode-A	Filter-A	VFO-B	Mode-B	Filter-B	Split	Vfo-Act.	DUP	Val.Dup	Att/Pre	AGC	NB	Tone
Mem. 30	27.185.000	AM	OFF	0	LSB	OFF	NOSPLIT	VFO A	NODUP	600	OFF	OFF	OFF	OFF
Mem. 40	460.000.000	FM	OFF	0	LSB	OFF	NOSPLIT	VFO A	NODUP	1.600	OFF	OFF	OFF	OFF
Mem. 41	443.300.000	FM	OFF	0	LSB	OFF	NOSPLIT	VFO A	NODUP	1.600	OFF	OFF	OFF	OFF
Mem. 42	444.350.000	FM	OFF	0	LSB	OFF	NOSPLIT	VFO A	NODUP	1.600	OFF	OFF	OFF	OFF
Mem. 43	443.225.000	FM	OFF	0	LSB	OFF	NOSPLIT	VFO A	NODUP	1.600	OFF	OFF	OFF	OFF
Mem. 44	444.850.000	FM	OFF	0	LSB	OFF	NOSPLIT	VFO A	NODUP	1.600	OFF	OFF	OFF	OFF
Mem. 45	444.800.000	FM	OFF	0	LSB	OFF	NOSPLIT	VFO A	NODUP	1.600	OFF	OFF	OFF	OFF
Mem. 46	444.900.000	FM	OFF	0	LSB	OFF	NOSPLIT	VFO A	NODUP	1.600	OFF	OFF	OFF	OFF
Mem. 47	444.100.000	FM	OFF	0	LSB	OFF	NOSPLIT	VFO A	NODUP	1.600	OFF	OFF	OFF	OFF
Mem. 48	444.975.000	FM	OFF	0	LSB	OFF	NOSPLIT	VFO A	NODUP	1.600	OFF	OFF	OFF	OFF
Mem. 49	442.250.000	FM	OFF	0	LSB	OFF	NOSPLIT	VFO A	NODUP	1.600	OFF	OFF	OFF	OFF
Mem. 50	448.350.000	FM	OFF	0	LSB	OFF	NOSPLIT	VFO A	NODUP	1.600	OFF	OFF	OFF	OFF
Mem. 51	449.850.000	FM	OFF	0	LSB	OFF	NOSPLIT	VFO A	NODUP	1.600	OFF	OFF	OFF	OFF
Mem. 52	444.000.000	FM	OFF	0	LSB	OFF	NOSPLIT	VFO A	NODUP	1.600	OFF	OFF	OFF	OFF
Mem. 53	442.800.000	FM	OFF	0	LSB	OFF	NOSPLIT	VFO A	NODUP	1.600	OFF	OFF	OFF	OFF

Description:

VFO A:
 Mode:
 Filter:
 VFO Active:
 Tone:

VFO B:
 Filter:
 Split:
 Value of Dup:

G Extensions

ATTENTION: the s commands of the 1 and for this is not read/write from th name, the tone an state. These limita hardware and not computer software

Click on the description of the column, you can change sorting display of memories (e.g. VFO, description, mo

Double-click the cell to edit.

All the parameters are memorized in a file of the PC. For every memory is saved a description, the state of the VFO-A. and Split, and for the version 706MKII/G, the state of the visible commands in the relative section.

- [Delete] delete the selected memory.
- [New] clear the input for insert a new memory.
- save the selected memory.
- [Active] transfers the values of the selected memory in the VFOs of the RTX.
- [Act. e Tr.] activates the selected memory and it saves it in one of the 99 memories of the RTX.
- [Read mem.] [sequentially reads the memories of the RTX](#) and it memorizes her assigning the name Mem. [nn], where memory read. **ATTENTION: it is not possible to read the name of the memories memorized in the and the value of the tone, this not for a lack of the program, but for the limited remote controls**
- [Write mem.] writes all the memories whose name begins with Mem. [nn] in the memory number [nn] of the RTX. Poss memory [nn] of the RTX will come replaced.
- [Print] prints all the memories as you visualize in the grid.

The voice Tone is alone indicative and cannot be managed through the interface CI-V.

View also [Memories Radio](#)

Created with the Personal Edition of HelpNDoc: [Produce Kindle eBooks easily](#)

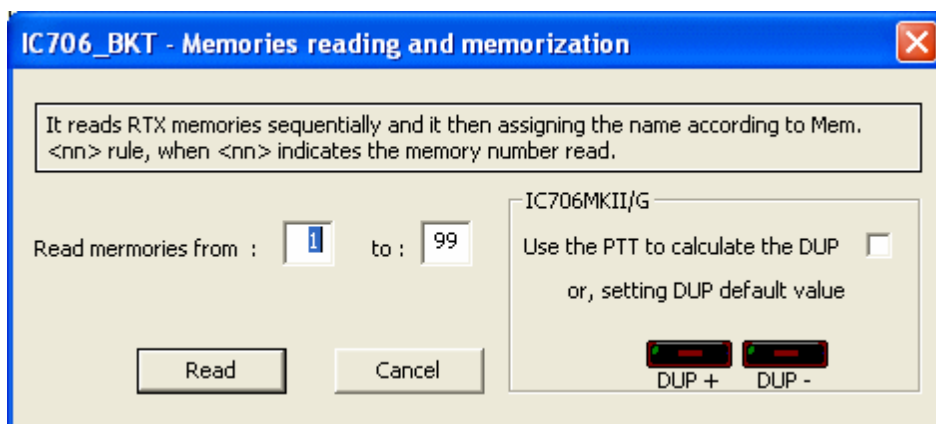
Reading Memories

Memories PC

[Top](#) [Previous](#) [Next](#)

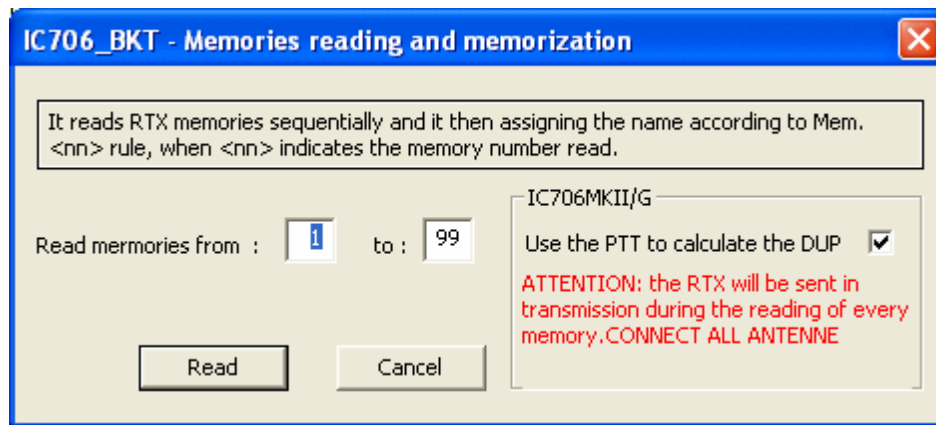
Reading Memories

[Top](#) [Previous](#) [Next](#)



It is possible to sequentially read the memories of the RTX and to move her to the database of IC706_BKT. Considering that it is not possible to read the name of the memories, to every read memory its assigned the name Mem [nn] where nn is the number of the memory. For the model IC706MKII/G it is possible to point out a default setting for the DUP, or if the function PTT has been activated in the configuration of the program, it is possible to automatically calculate the DUP sending the RTX in transmission.

Attention: selecting the voice [Use PTT to calculate the DUP], during the reading of the memories, the RTX will be sent in transmission, therefore it is Essential that the antennae are correctly connected for avoiding damages to the same RTX.



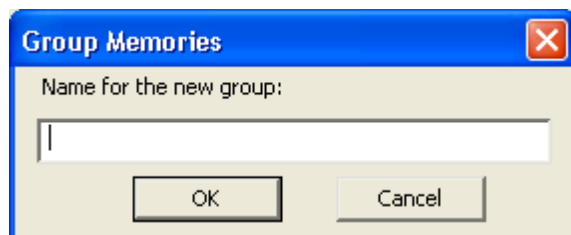
Created with the Personal Edition of HelpNDoc: [Streamline Your Documentation Process with HelpNDoc's Project Analyzer](#)

Group Memories

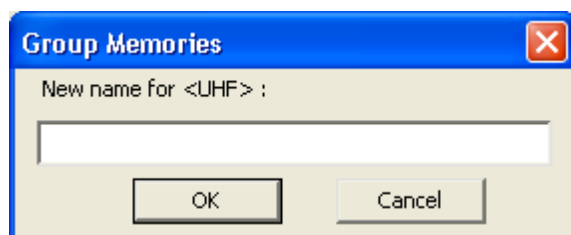
Memories PC

[Top](#) [Previous](#) [Next](#)

Group Memories

[Top](#) [Previous](#) [Next](#)

Specify the name of a new group of memories.



Specify the new name for the group of memories comprised between <>.

Created with the Personal Edition of HelpNDoc: [Free Kindle producer](#)

Memories Radio

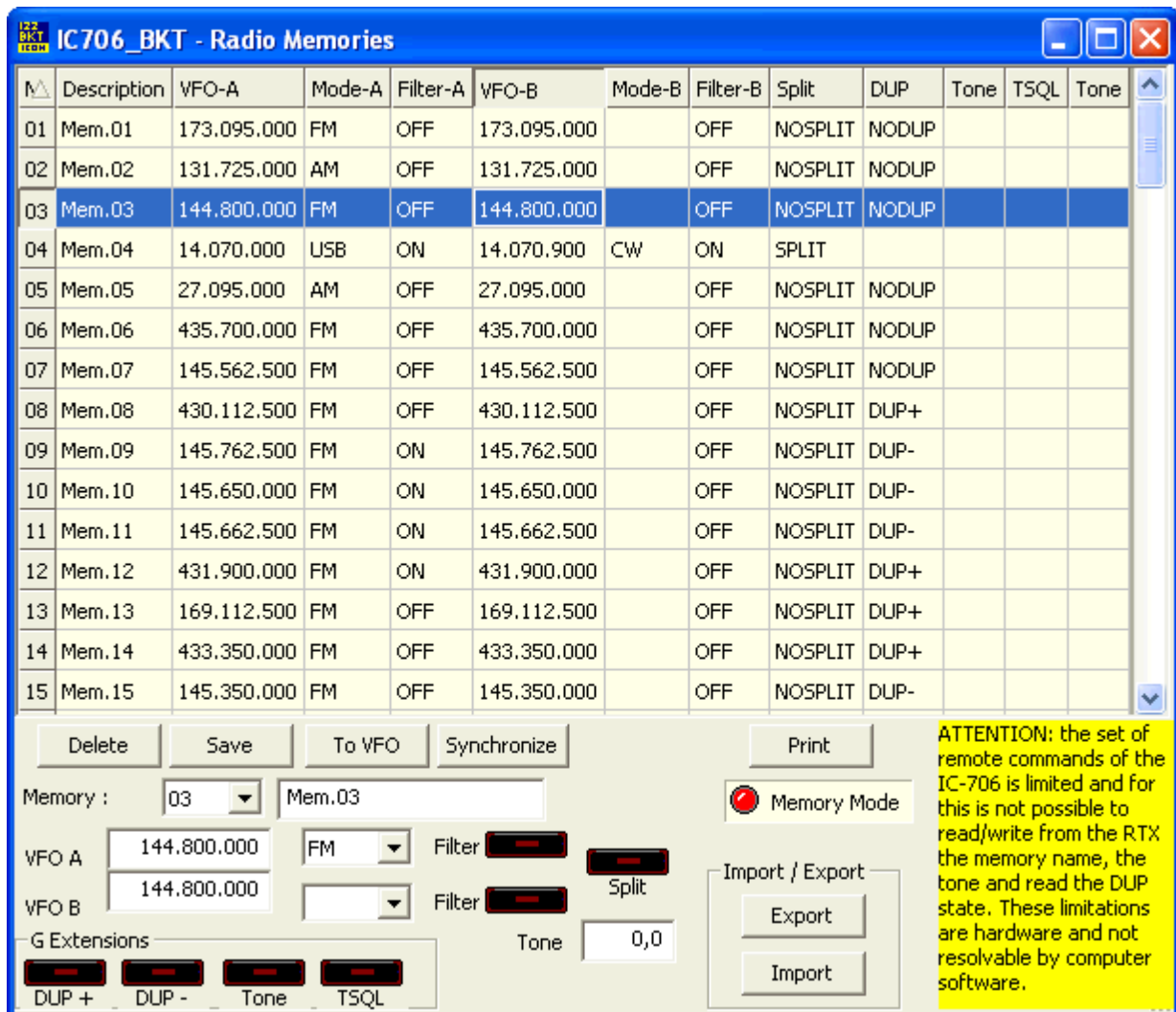
Created with the Personal Edition of HelpNDoc: [Streamline Your Documentation Creation with a Help Authoring Tool](#)

Memories Radio

Memories Radio

[Top](#) [Previous](#) [Next](#)

Memories Radio

[Top](#) [Previous](#) [Next](#)


N	Description	VFO-A	Mode-A	Filter-A	VFO-B	Mode-B	Filter-B	Split	DUP	Tone	TSQL	Tone
01	Mem.01	173.095.000	FM	OFF	173.095.000		OFF	NOSPLIT	NODUP			
02	Mem.02	131.725.000	AM	OFF	131.725.000		OFF	NOSPLIT	NODUP			
03	Mem.03	144.800.000	FM	OFF	144.800.000		OFF	NOSPLIT	NODUP			
04	Mem.04	14.070.000	USB	ON	14.070.900	CW	ON	SPLIT				
05	Mem.05	27.095.000	AM	OFF	27.095.000		OFF	NOSPLIT	NODUP			
06	Mem.06	435.700.000	FM	OFF	435.700.000		OFF	NOSPLIT	NODUP			
07	Mem.07	145.562.500	FM	OFF	145.562.500		OFF	NOSPLIT	NODUP			
08	Mem.08	430.112.500	FM	OFF	430.112.500		OFF	NOSPLIT	DUP+			
09	Mem.09	145.762.500	FM	ON	145.762.500		OFF	NOSPLIT	DUP-			
10	Mem.10	145.650.000	FM	ON	145.650.000		OFF	NOSPLIT	DUP-			
11	Mem.11	145.662.500	FM	ON	145.662.500		OFF	NOSPLIT	DUP-			
12	Mem.12	431.900.000	FM	ON	431.900.000		OFF	NOSPLIT	DUP+			
13	Mem.13	169.112.500	FM	OFF	169.112.500		OFF	NOSPLIT	DUP+			
14	Mem.14	433.350.000	FM	OFF	433.350.000		OFF	NOSPLIT	DUP+			
15	Mem.15	145.350.000	FM	OFF	145.350.000		OFF	NOSPLIT	DUP-			

Delete Save To VFO Synchronize Print
 Memory : 03 Mem.03
 VFO A 144.800.000 FM Filter Split
 VFO B 144.800.000 Filter Split
 G Extensions
 DUP + DUP - Tone TSQL
 Tone 0,0
 Import / Export
 Export Import

ATTENTION: the set of remote commands of the IC-706 is limited and for this is not possible to read/write from the RTX the memory name, the tone and read the DUP state. These limitations are hardware and not resolvable by computer software.

Management of the 99 memories of the RTX.

Click on the description of the column, you can change sorting display of memories (e.g. VFO, description, mode, etc...).

Double-click the cell to edit.

- [Delete] Delete the selected memory, if Memory Mode is enabled also delete the memory from the RTX.
- [Save] Save the current memory.
- [Print] Print the memories as visualized in the grid.
- [Synchronize] Synchronize this memory bank with the RTX.
- [Memory Mode] Put the RTX in Memory mode and enable the selected memory.

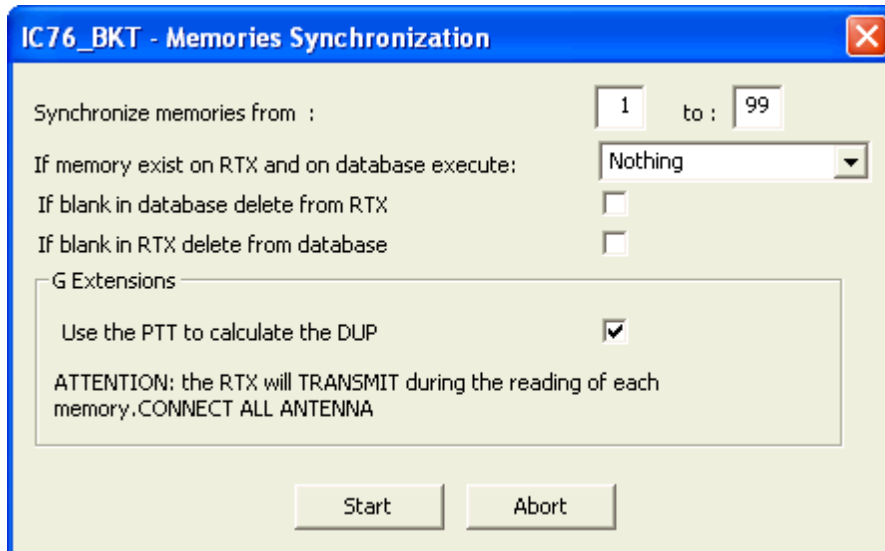
View also [Memories PC](#).

Memories Synchronization

Memories Radio

[Top](#) [Previous](#) [Next](#)

Memories Synchronization



Synchronization is to align the content of the database program memories with memories of RTX.

[Synchronize memories from] Select the range memory to Synchronize

[If memory exist on RTX and on database execute] Select the action to execute if the memory is present in the RTX and

- Nothing = leaves unchanged the database and the RTX
- Overwrite Database = overwrite the memory of the database with that of the RTX
- Overwrite RTX = overwrite the memory of the RTX with that of the database

[If blank in database delete from RTX]

If the memory in the database is empty it will be cancelled in the RTX

[If blank in RTX delete from database]

If the memory in the RTX is empty it will be cancelled by the database

[Use the PTT to calculate the DUP]

Switch the RTX in trasmission for calculate the DUP value. **Attention: during the synchronization of memories, the RTX will be sent in transmission, therefore it is necessary to be correctly connected for avoiding damages to the RTX.**

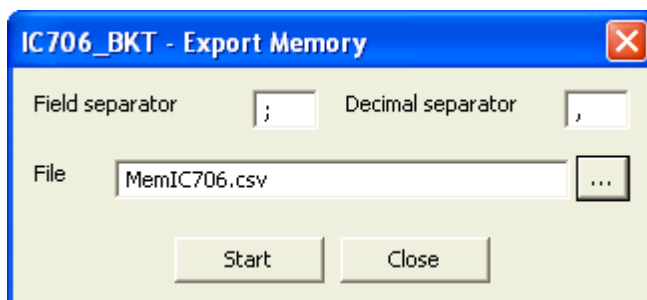
Created with the Personal Edition of HelpNDoc: [Easily convert your WinHelp HLP help files to CHM with HelpNDoc's step-by-step guide](#)

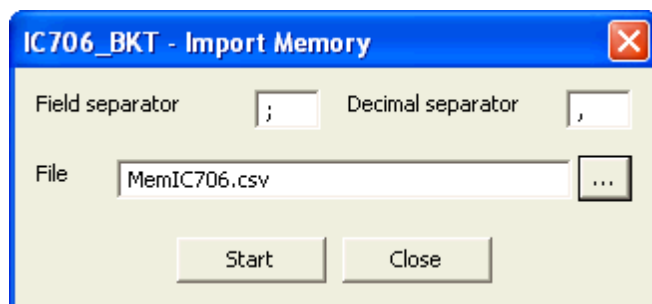
Memory Import / Export

Memories

[Top](#) [Previous](#) [Next](#)

Memory Import / Export

[Top](#) [Previous](#) [Next](#)



Import or Export the memory in a CSV format file. The format CSV can be used with Microsoft Excel.

[Field separator]	Character to be used for separating a field from the other.
[Decimal separator]	Character to be used for pointing out the decimal value (Es. 87.5 use the point)
[File]	Select the file to create or to use
[...]	Press for browsing the folders to the search of the file
[Start]	Begin the conversion
[Close]	Close this window

Created with the Personal Edition of HelpNDoc: [Transform Your Word Document into a Professional eBook with HelpNDoc](#)

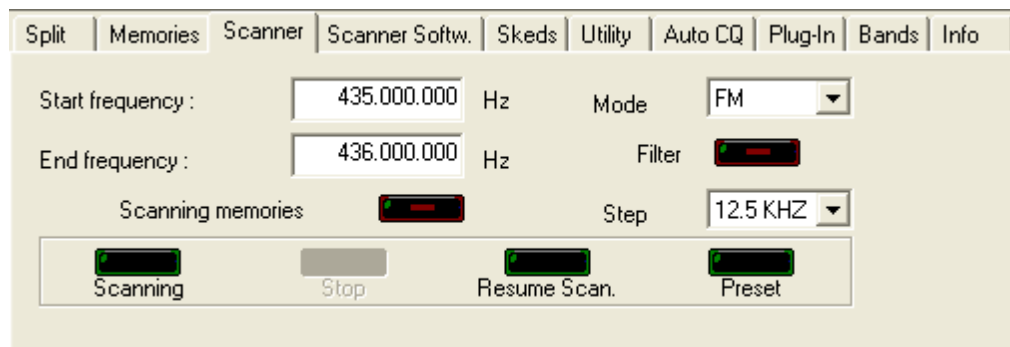
Scanner

Created with the Personal Edition of HelpNDoc: [Full-featured eBook editor](#)

Scanner

Scanner

[Top](#) [Previous](#) [Next](#)



Performs the cyclical scanning among 2 frequencies, or among the active memories of the RTX. The speed of scanning and the restart are alone setting from the RTX through the initial mode Set holding pressed the key [LOCK] while it is power on the rtx.

Click [Preset](#) to manage the database of pre-set scan.

ATTENTION: all the frequencies are in Hz.

Created with the Personal Edition of HelpNDoc: [Maximize Your Documentation Capabilities with HelpNDoc's](#)

Scanner Software

Scanner

[Top](#) [Previous](#) [Next](#)

Scanner Software

[Top](#) [Previous](#) [Next](#)

The screenshot shows the 'Scanner' tab of the 'Scanner Software' window. It features a menu bar with options: Split, Memories, Scanner, Scanner Softw., Skeds, Utility, Auto CQ, Plug-In, Bands, and Info. The main area contains several input fields and buttons:

- Start frequency: 145.000.000 Hz, Mode: FM, Step: 5 KHZ
- End frequency: 146.000.000 Hz, Filter: (red indicator), Pause: 1.000 ms
- G Extensions if SQL off: (checkbox)
- Pause 1: -1 ms, Pause 2: 0 ms, Log: (red indicator), Record: (grey button)
- Buttons at the bottom: Scanning, Resume Scan., Preset, View Log, Memory Mode (all with green indicators).

Performs a cyclical scanning among two frequencies unlike the [configuration of the program](#).

[Pause] Pause in milliseconds before passing to the next frequency.

IC706MKII/G if SQL off:

[Pause 1] Time of attended in milliseconds after having noticed a signal
 0 = it attends up to that SQL passes in ON, that is up to that there is a signal
 -1 = ignore the SQL

[Pause 2] Time of pause in milliseconds before passing to the following frequency after SQL has returned ON.

[Log] Enable/disable the [scanning log](#) **IDD_DLGLOGSQL**

[Record] Enable/disable the recording audio while the scanning. The key is active only if the [audio support](#) is active.

[Scanning] Resets the log and begins a new scanning

[Stop] Interrupts the scanning

[Resume Scan.] Resume the scanning departing from the frequency on the display and adding the data to the log.

[Preset] Management database [scans pre-set](#).

[View Log] View the [scanning log](#)

[Memory Mode] Select scanning from memories

[Frequency Mode] Select scanning from frequency

ATTENTION: all the frequencies are in Hz.

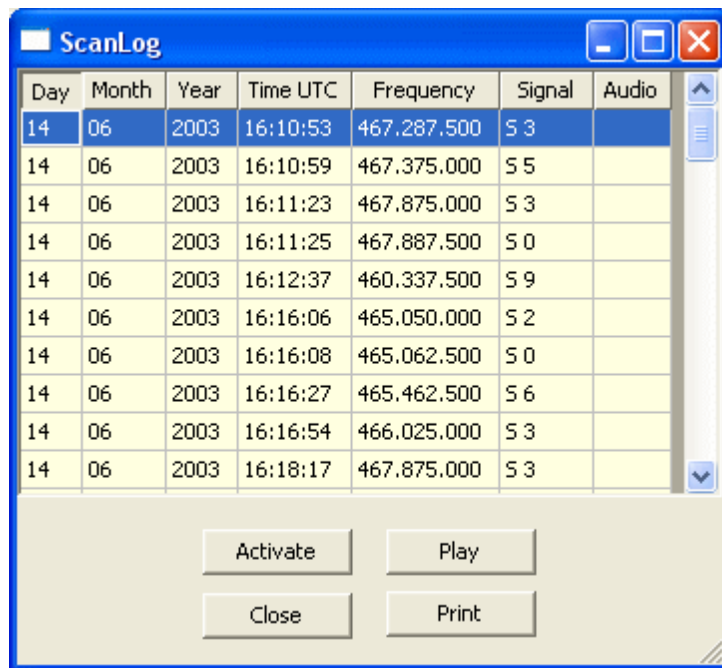
Scanning Log

Scanner

[Top](#) [Previous](#) [Next](#)

Scanning Log

[Top](#) [Previous](#) [Next](#)



From the scanning software, if I activate, memorized in a file of log date, time, frequency in Hz and power of the signal, besides, if activated, the communication is recorded.

- [Activate] Activate the selected frequency.
- [Play] Play the recording of the selected line.
- [Close] Close the windows of log.
- [Print] Print the grid.

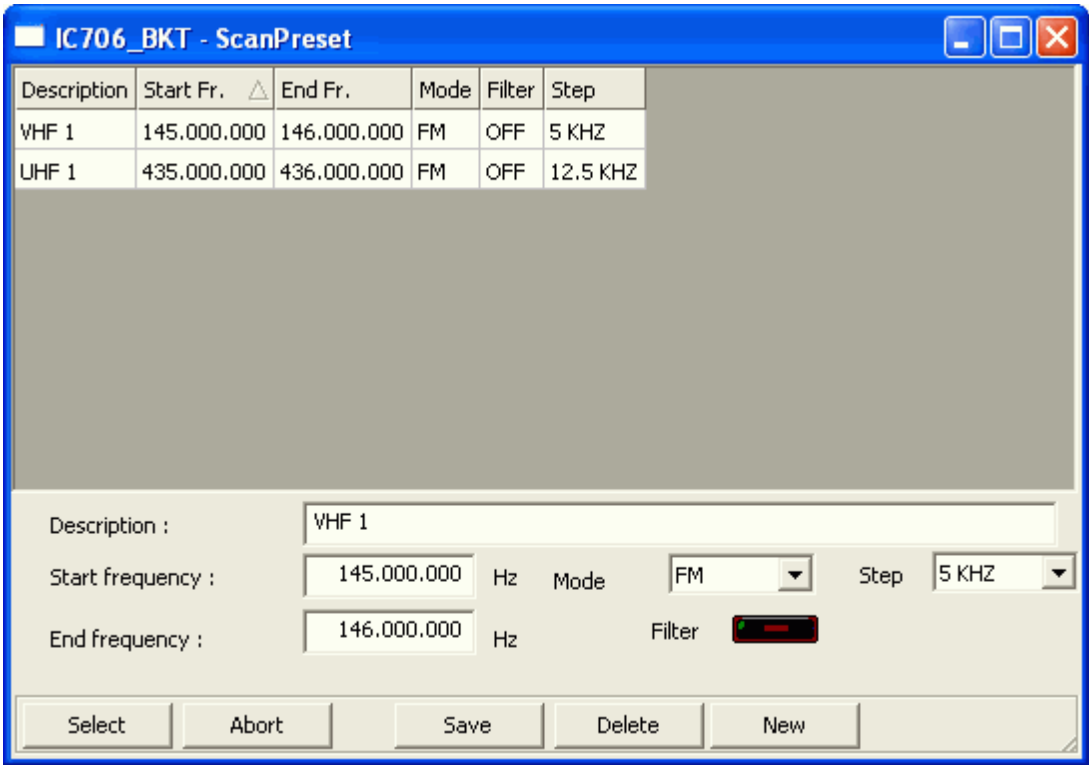
Scanner Preset

Scanner

[Top](#) [Previous](#) [Next](#)

Scanner Preset

[Top](#) [Previous](#) [Next](#)



ScanPreset to use pre-set of scans.

- [Select] Filler the values selected in the mask Scanner
- [Abort] Closes the window without changing the values in the mask of the Scanner
- [Save] Save the values in the fields of editing, if there is a scan with the same description will be overwritten.
- [Delete] Deletes the scan with the chosen description
- [New] Clear the fields of editing to facilitate the insertion of new data

Skeds

Skeds

Allows to program the activation of frequencies and modes in dates and pre-arranged schedules. Thirty seconds before the programmed activation a [message of warning](#) that allows to annul the planning will appear.

All the plannings are in date and time UTC and the frequencies in Hz.

For a correct operation of this function it is essential that the RTX is power on in the moment of the programmed activation

[[Delete skeds](#)] Delete skeds programmed among the specified dates.

[[Create recur sked](#)] Create recurrent skeds.

[Delete old skeds on startup] If checked, on program startup delete the skeds with date and time precedents.

[Descr.] Description of the sked

[Time and Date UTC] Time and date of activation of the sked

[VFO A] Frequency, mode and filter to use for the VFO A

[VFO B] Frequency, Mode and filter to use for the VFO B

[Split] Enable/Disable Split

[VFO Active] VFO to use in reception

[Record] No Record: does not start the audio recorder

Record: starts to record the activation of the sked

Record SQL: starts to record the activation of the sked recording only when the

SQL is open

All the plannings are in date and time UTC and the frequencies in Hz. For a correct operation of this function it is essential that the RTX is power on in the moment of the programmed activation

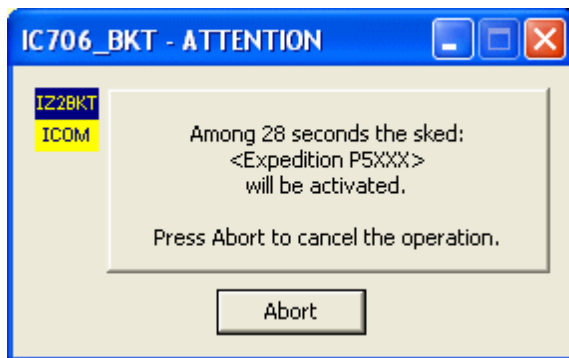
Sked Activation

Skeds

[Top](#) [Previous](#) [Next](#)

Sked Activation

[Top](#) [Previous](#) [Next](#)



It is possible to interrupt the activation of a sked pressing [Abort].

Created with the Personal Edition of HelpNDoc: [Transform Your Documentation Process with HelpNDoc's Project Analyzer](#)

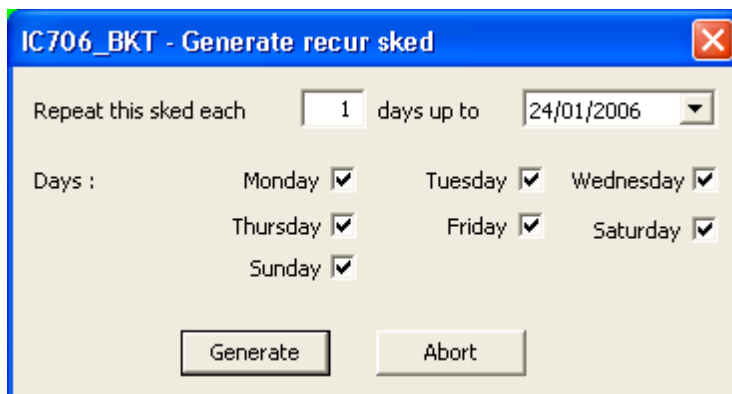
Create recur skeds

Skeds

[Top](#) [Previous](#) [Next](#)

Create recur skeds

[Top](#) [Previous](#) [Next](#)



To use in order to generate automatically one series of skeds with the current values of frequency and VFO.

To the description of every skeds it comes added "r->nn" where nn it is the number of the recurrence.

Created with the Personal Edition of HelpNDoc: [Converting Word Docs to eBooks Made Easy with HelpNDoc](#)

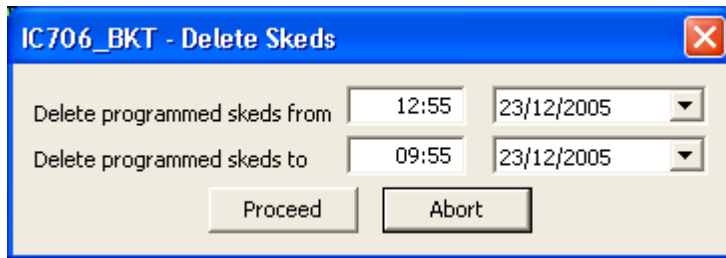
Delete skeds

Skeds

[Top](#) [Previous](#) [Next](#)

Delete skeds

[Top](#) [Previous](#) [Next](#)



Delete all skeds programmed among the specified dates.

Created with the Personal Edition of HelpNDoc: [Maximize Your Reach: Convert Your Word Document to an ePub or Kindle eBook](#)

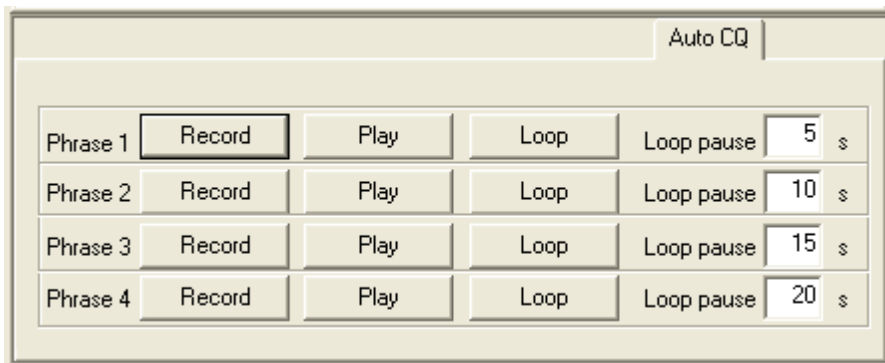
AutoCQ

Function

[Top](#) [Previous](#) [Next](#)

AutoCQ

[Top](#) [Previous](#) [Next](#)



With AutoCQ it is possible to record up to 4 phrases that can also be reproduced in loop.

- [Record] Records the phrase.
- [Play] If activated the PTT, sends the RTX in transmission and it reproduces an only time the phrase.
- [Loop] If activated the PTT, sends the RTX in transmission and it reproduces more times the sentence. Re-push the key for interrupt immediately the reproduction and return in rx.
- [Loop pause] Pause in second between the reproduction of a phrase and the following one.

Created with the Personal Edition of HelpNDoc: [Keep Your Sensitive PDFs Safe with These Easy Security Measures](#)

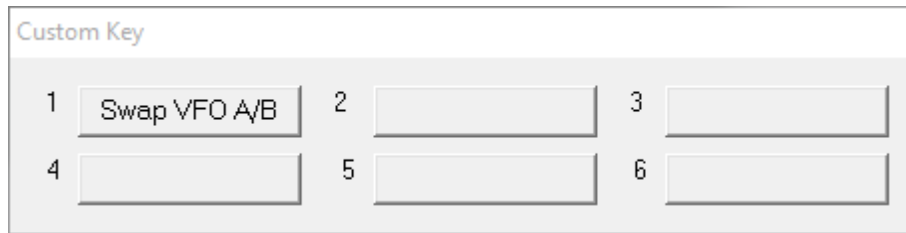
Custom Key

Function

[Top](#) [Previous](#) [Next](#)

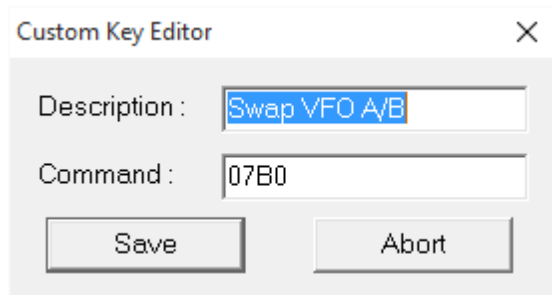
Custom Key

[Top](#) [Previous](#) [Next](#)



The Custom Keys are programmable keys with CI-V commands (for a list of commands CI-V, see the manual RTX)

Click the button to send the command previously stored instead to change or enter a new command, click on the button with the right mouse button.



The editor allows you to customize the custom key with the desired description and the command to be sent. The commands must be entered in hexadecimal and always with an even number of characters, for example, for the command 7 inert 07.

Created with the Personal Edition of HelpNDoc: [Create help files for the Qt Help Framework](#)

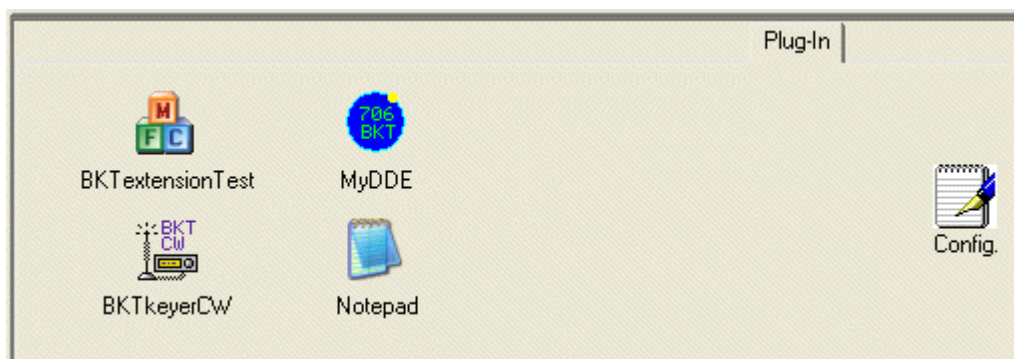
Plug-In

Plug-In

[Top](#) [Previous](#) [Next](#)

Plug-In

[Top](#) [Previous](#) [Next](#)



Use Config. to add, remove or modify [Plug-In](#).

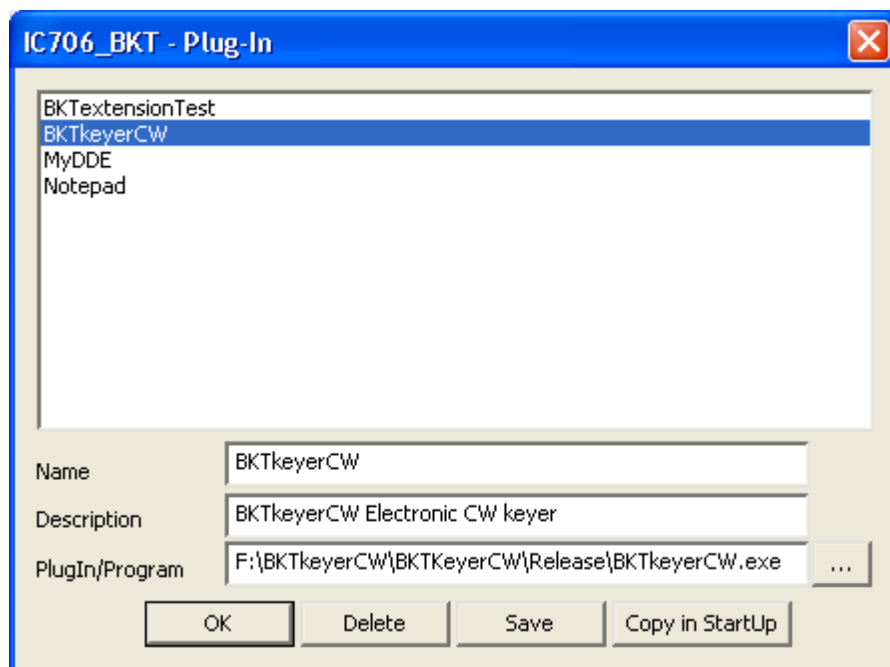
The Plug-in they are additional programs of support to IC706_BKT, however it can be added, as Plug-in any program (in screens has been added Notepad of windows).

Plug-In Mangement

Plug-In

[Top](#) [Previous](#) [Next](#)

Plug-In Mangement

[Top](#) [Previous](#) [Next](#)


Configuration of Plug-In.

[Name]	used Name of Plug-in like description of the relative key
[Description]	Description of the functions of Plug-in
[PlugIn/Program]	Line of execution of Plug-in
[...]	Look in the folders to the search of Plug-in
[OK]	Return to the program
[Delete]	Remove from the selected directory Plug-in (does not cancel Plug-in from the disc)
[Save]	Save the modifications carried out to Plug-In selected
[Copy in StartUp]	Copy Plug-in selected in the group of programs Start and will come executed to the IC706_BKT start

OnAir

Funzioni

[Top](#) [Previous](#) [Next](#)

On Air

[Primo](#) [Precedente](#) [Prossimo](#)

HrdLog					
Enable OnAir <input type="checkbox"/>	Callsign	IZ2BKT	Radio:		Refresh: 30 s
Enable Cat <input checked="" type="checkbox"/>	Code:	*****	Mode:		DX Cluster <input type="button" value="Send Now"/>
EnzoLog					
Enable <input type="checkbox"/>	Callsign:	IZ2BKT	Radio:		Refresh: 35 s
	Password:	*****	Mode:		<input type="button" value="Send Now"/>

Send via internet the On-Air status with frequency and operating mode in HrdLog and EnzoLog
If enabled, it adds some CAT features to HrdLog

[Enable] Enable / disable the automatic sending of the state

[Callsign] Callsign used in HrdLog or EnzoLog

[Code] Only HrdLog, enter the upload code received at registration on HrdLog

[Password] Only EnzoLog, enter the password to access EnzoLog

[Radio] Enter a descriptive text of the transceiver, if blank will be sent the description of the selected radio in configuration

[Mode] Mode, if blank will be sent to the current operating mode

[Refresh] Interval in seconds for sending a new state

[Send Now] Send status immediately

[Enable Cat] Enable the CAT interface to HrdLog, for example clicking on the frequency in the [cluster page](#) tunes the rtx (requires [Microsoft .NET Framework 4](#))

[DX Cluster] Opens in the browser [HrdLog DX clusters](#)

On-Air operation requires an internet connection

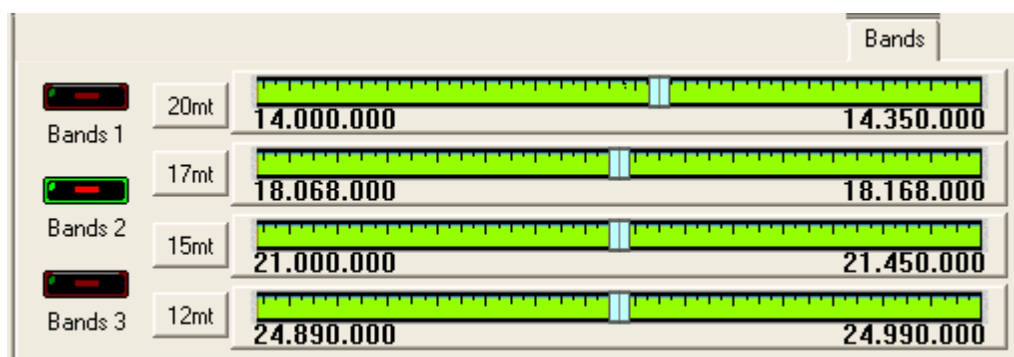
More information about the On-Air are available on HrdLog and EnzoLog

Created with the Personal Edition of HelpNDoc: [Easily create EBooks](#)

Bands

Bands

[Top](#) [Previous](#) [Next](#)



It visualizes the radioamateurs bands separated in 3 groups on 4 tuning scales.

[Bands 1] First group: 160mt - 80mt - 40mt and 30mt

[Bands 2] Second group: 20mt - 17mt - 15mt and 12mt

[Bands 3] Third group: 10mt - 6mt - 2mt and 70cm

Click on the pointer of tuning in order to enable the relative band.

Click with the [right key on the pointer](#) in order to specify one new frequency.

To modify the values of the bands, use [configure the Limits of band and mode](#).

Created with the Personal Edition of HelpNDoc: [Free EBook and documentation generator](#)

PTT

PTT

[Top](#) [Previous](#) [Next](#)



It's possible to manage the PC PTT if an interface is available for digital modes, or, if the [simple circuit brought above](#) has been built.

Click on the microphone to commute transmission on/off, or, if configured in the [configuration](#), to press the space bar.

[Setup] [Configure PTT](#)

[Tune] Switch in AM mode and put TX On for the seconds configured

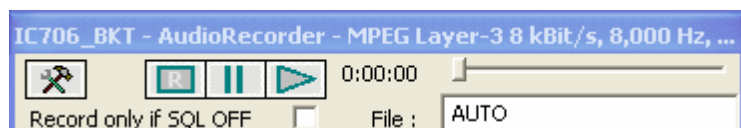
[Reset] Reset TX time count

Created with the Personal Edition of HelpNDoc: [Effortlessly create a professional-quality documentation website with HelpNDoc](#)

Audio Recorder

Audio Recorder

[Top](#) [Previous](#) [Next](#)



The AudioRecorder allows to directly record from the RTX to the PC.

For a correct operation it needs to connect the card audio of the PC with the RTX (see [audio interface](#)), for the recording, is very important a correct choice of the CoDec (see [audio setting](#)).



Open the [audio setting](#).

Start/stop the recording.

Break/resume the recording or the play.

Start/stop the play..

[Record only if SQL OFF] if I activate, it starts the recording only in presence of a signal (SQL OFF) and suspended when the signal interrupts (SQL ON), it works only with the model 706mkII/G.

[File] it is possible to specify a file audio, if he leaves AUTO, to the beginning of every recording, will be produced a file by the name BKTymmddhmmss.WAV, where yy=year, mm=month, dd=day, hh=hour, mm=minute, ss=second of beginning recording. Leaving AUTO and starting the play is opened a window from which to select the file to reproduce.

Created with the Personal Edition of HelpNDoc: [Converting Word Documents to eBooks: A Step-by-Step Guide with HelpNDoc](#)

Various

Created with the Personal Edition of HelpNDoc: [Experience the Power and Ease of Use of HelpNDoc for CHM Help File Generation](#)

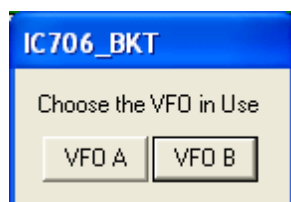
Select VFO

Various

[Top](#) [Previous](#) [Next](#)

Select VFO

[Top](#) [Previous](#) [Next](#)



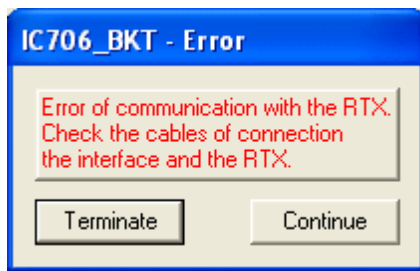
It is not possible to currently read through the interface CI-V the VFO in use, for which it is necessary to manually point out pressing on the relative key.

Created with the Personal Edition of HelpNDoc: [Generate EPub eBooks with ease](#)

Communication Error

Various

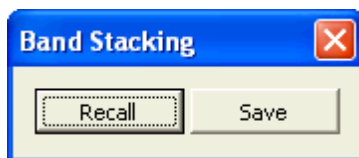
[Top](#) [Previous](#) [Next](#)

Communication Error[Top](#) [Previous](#) [Next](#)

This message appears if the time of timeout has been old before the answer of the RTX to a command. The problem is given by the missed communication among the PC and the RTX.

View [COM Setting](#) for more information.

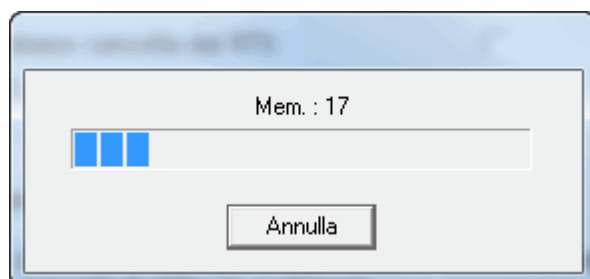
Created with the Personal Edition of HelpNDoc: [Effortlessly Create Professional Documentation with HelpNDoc's Clean UI](#)

Band Stacking**Various**[Top](#) [Previous](#) [Next](#)**Band Stacking**[Top](#) [Previous](#) [Next](#)

[Recall] Loads frequency and operating mode previously saves in this operating stack
 [Save] Saves frequency and operating mode in the operating stack chosen

The triple operating stack allows to save three comprehensive memories for frequency band and operating mode.

Created with the Personal Edition of HelpNDoc: [Elevate Your CHM Help Files with HelpNDoc's Advanced Customization Options](#)

Progress Indicator**Various**[Top](#) [Previous](#) [Next](#)**Progress Indicator**[Top](#) [Previous](#) [Next](#)

Progress of the operation in course.

Full Trial Function

Various

[Top](#) [Previous](#) [Next](#)

Full Trial Function

[Top](#) [Previous](#) [Next](#)

The chosen function is available only in [Full version](#), however, if you have registered the Free version the received key allows to try these functions for a sure period.

[Register the program] Opens [window to load the registration key](#) or to have information on the program registration

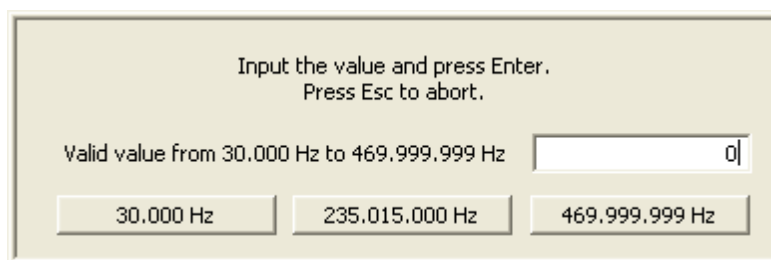
[Continue] The execution of the program continues, the function won't be executed

Numerical Input

Various

[Top](#) [Previous](#) [Next](#)

Numerical Input

[Top](#) [Previous](#) [Next](#)

Input a value comprised between the values specifies and press the Enter key, to cancel the input press ESC .

OFF-LINE Mode

Various

[Top](#) [Previous](#) [Next](#)

OFF-LINE Mode

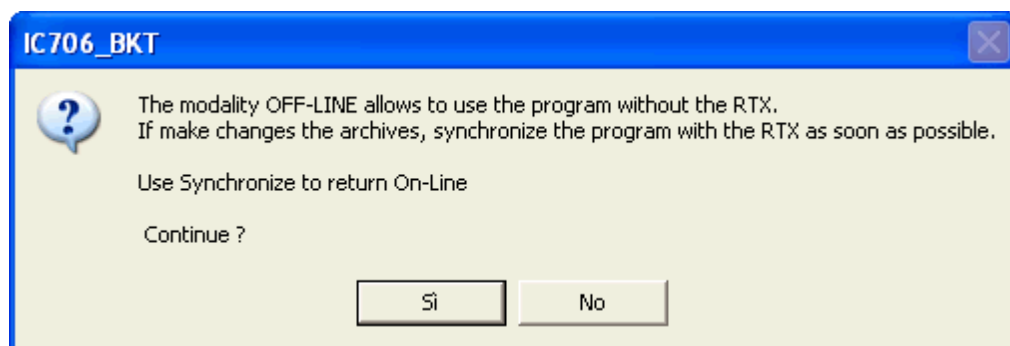
[Top](#) [Previous](#) [Next](#)



Error from the serial port COM specified in [configuration](#).

[Exit] Close the program

[Work off line] Use the program not connected to the RTX, the modifications to the memory database will not be reflected in the RTX until the next [Synchronization](#)



For return ON-LINE use the Synchronize key in [main window](#).

Created with the Personal Edition of HelpNDoc: [Free EBook and documentation generator](#)

Remote management by TCP/IP

Created with the Personal Edition of HelpNDoc: [Effortlessly optimize your documentation website for search engines](#)

Remote management by TCP/IP

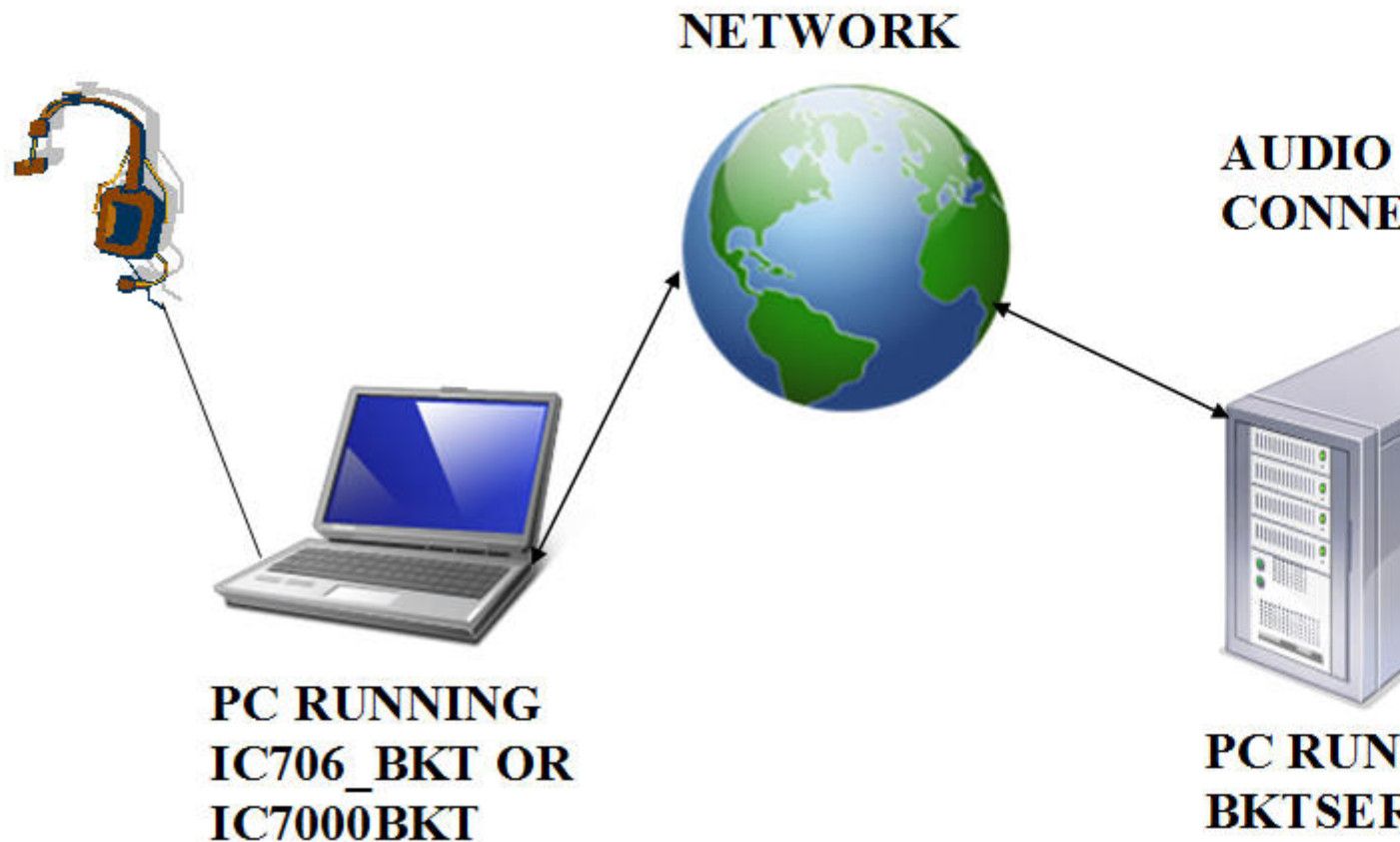
Remote management by TCP/IP

[Top](#) [Previous](#) [Next](#)

The remote management by TCP/IP is managed through two separate modules:

1. Server [BKTServer](#)
Running on the computer connected to the RTX.
2. Client [BKTClient](#)
Its an external driver for IC7000BKT and IC706_BKT programs.

Is necessary opening the communications port (default 7060 TCP) on the firewall.



Created with the Personal Edition of HelpNDoc: [Effortlessly Convert Your Word Doc to an eBook: A Step-by-Step Guide](#)

BKTCClient

Created with the Personal Edition of HelpNDoc: [Effortlessly create a professional-quality documentation website with HelpNDoc](#)

Access Control

BKTCClient

[Top](#) [Previous](#) [Next](#)

Access Control

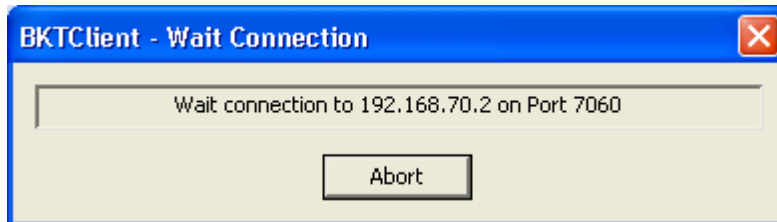
[Top](#) [Previous](#) [Next](#)



BKTCClient start window.

[Connect to] Address IP of the PC server

- [Password] Password connection, only used if required by the server.
 [Connect to startup] If selected not shown this window but connect directly to the server.
 [Setup] [BKTClient configuration.](#)
 [Connect] Starts the connection to the server.
 [Exit] Closes the program.
 [Off-Line] Executes IC7000BKT or IC706_BKT without connecting it to the server.



Wait of the connection to the server.

Created with the Personal Edition of HelpNDoc: [News and information about help authoring tools and software](#)

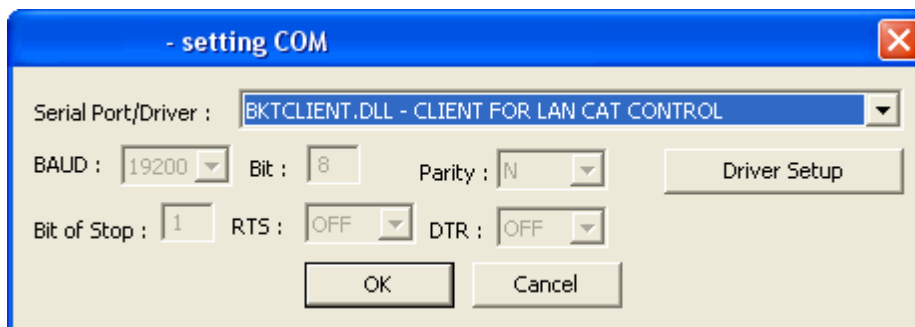
BKTClient

BKTClient

[Top](#) [Previous](#) [Next](#)

BKTClient

[Top](#) [Previous](#) [Next](#)



For enable the driver BKTClient to select BKTCLIENT.DLL as Port in the serial port configuration of the program IC7000BKT or IC706_BKT.

- [Driver Setup] [Configure the BKTClient.](#)

Created with the Personal Edition of HelpNDoc: [Generate EPub eBooks with ease](#)

Configuration

BKTClient

[Top](#) [Previous](#) [Next](#)

Configuration

BKTClient - Setup

Server: PC2

Port Com.: 7060

Local IP: 192.168.070.001 (only if there are more than one LAN card)

Enable Audio Support: ☐

Send audio only when the PTT is ON: ☒

Audio input: Default

Audio output: Default

Password: *****

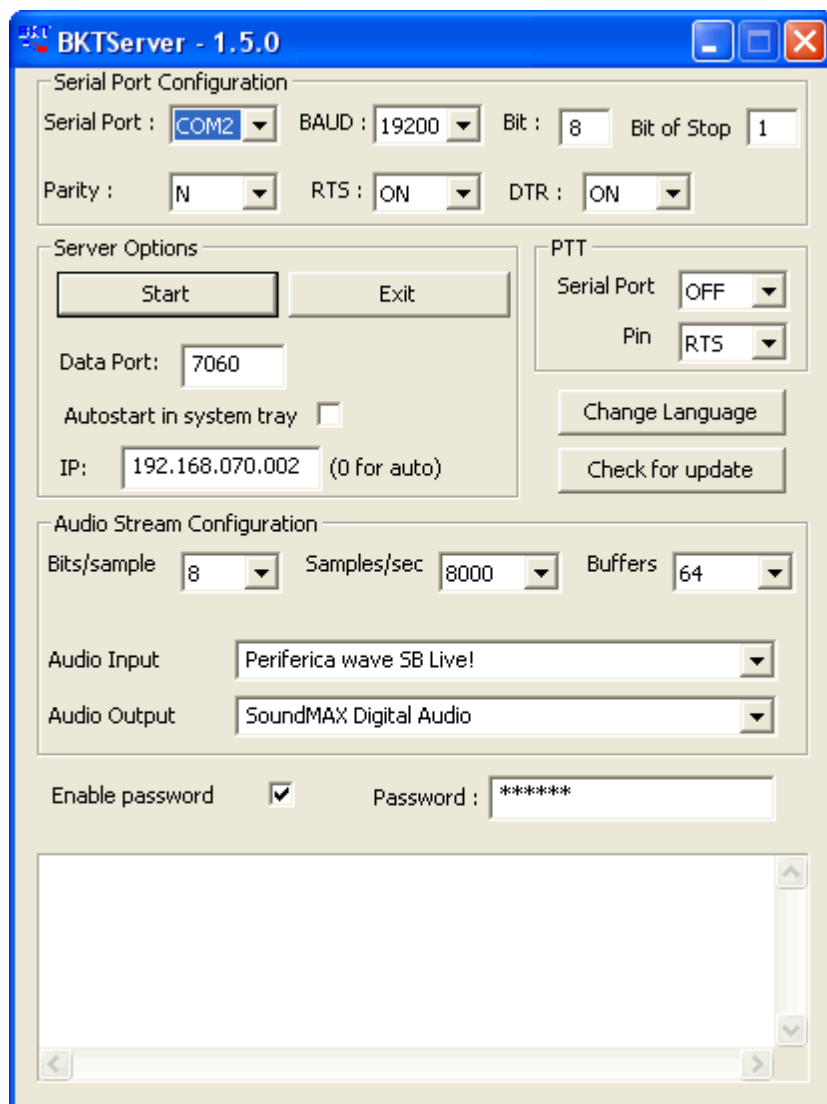
OK Cancel

- [Server] IP address of the PC server with in execution BKTServer
- [Port Com.] LAN port of communication
- [Local IP] If you have multiple LAN cards you can specify the local IP address.
- [Enable Audio Support] Enables the receipt/ transmission of the audio. For a correct working the server pc must have the client uses the microphone to transmit. Is not possible transmit audio file
- [Send audio only when the PTT is ON] Will transmit the audio from the client toward the server only when the PTT is active transmission
- [Audio input] Select the audio card which the microphone is connected on and enable the microphone entry from
- [Audio output] Select the audio card where to listen to the audio received from the server, regulate the volume us
- [Password] Password connection, only used if required by the server

Created with the Personal Edition of HelpNDoc: [Effortlessly create a professional-quality documentation website with HelpNDoc](#)

BKTServer

BKTServer	Top Previous Next
BKTServer	Top Previous Next



BKTServer must be in execution on the remote computer attached to the RTX.

[Serial Port Configuration]

Specify the parameters of connection with the RTX.

[Server Options]

Data Port: Port LAN of listening and communication (default = 7060) (she must be opened by the firewall).

Autostart in system tray: He starts the server automatically and reduces it to icon in the system tray.

IP: IP address of listening, if 000.000.000.000 BKTServer automatically selects the IP of the first net interface. Attention him IP choosing must be associate to a network interface of the computer where is in execution BKTServer.

[PTT]

Specifies the PTT parameters (see PTT configuration in the help of the program IC706_BKT.)

Not used for the Icom IC 7000.

Change Language: Program language to use.

Check for update: Check if new version its avaiable. Need a internet connection.

[Audio Stream Configuration]

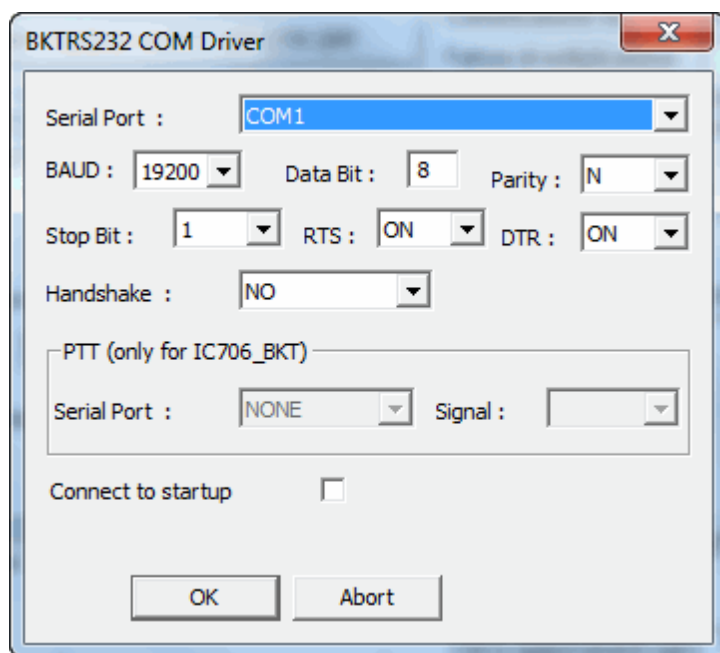
Specify the parameters audio, increasing the values of Bits/sample and Samples/sec it will increase the fidelity of the audio but it needs greater band. Increase the Buffers if loss audio packets.

Enable password: if set only client with correct Password is available to connect.

Created with the Personal Edition of HelpNDoc: [Free Qt Help documentation generator](#)

BKTRS232 Alternative serial driver

BKTRS232 Alternative serial driver

[Top](#) [Previous](#) [Next](#)

Use this driver if you have communication problems with the RTX.

Created with the Personal Edition of HelpNDoc: [Effortlessly upgrade your WinHelp HLP help files to CHM with HelpNDoc](#)

Interfacing with other programs

Interfacing with other programs

[Top](#) [Previous](#)

IC706_BKT includes a DDE server compatible with the suite DXLab that allows you to communicate with different programs including [MultiPSK](#), FLDigi with [FLDigi-DXLab Gateway](#) installed, SpotCollector and other compatible with Commander of DXLab suite.

For a proper functioning of the DDE server requires that the program IC706_BKT is executed BEFORE any other program.

The IC706_BKT program include direct communication with [BBLogger](#).

Created with the Personal Edition of HelpNDoc: [Free iPhone documentation generator](#)
